

QUICK GUIDE CREATE SCHEDULE FROM ESTIMATE DATA



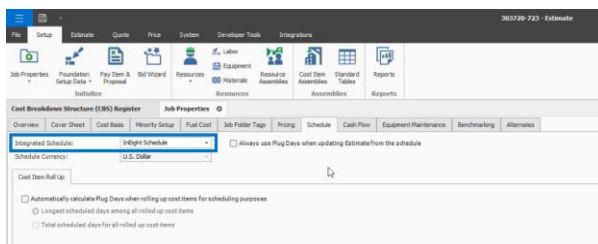
InEight®
SCHEDULE



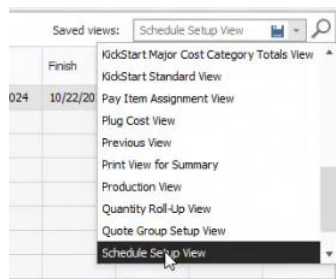
InEight®
ESTIMATE

TIE ESTIMATE DATA TO SCHEDULE

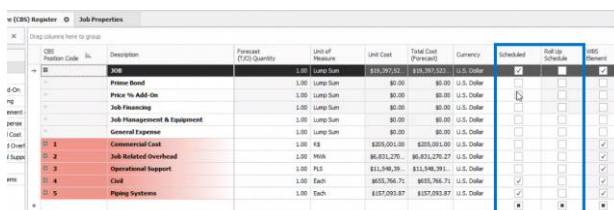
1. From InEight Estimate, go to the Job Properties > Schedule tab.
2. Select InEight Schedule from the Integrated Schedule drop-down.



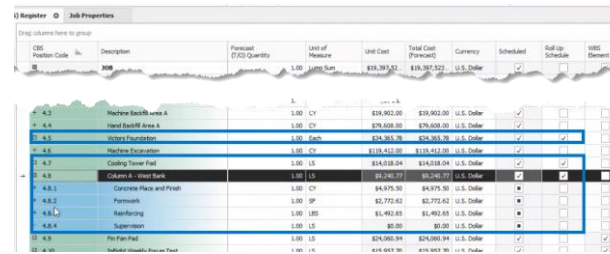
3. Click **OK**.
4. Return to the CBS and change the view to "Schedule Setup View."



5. From the Schedule column, select the items to add to InEight Schedule.



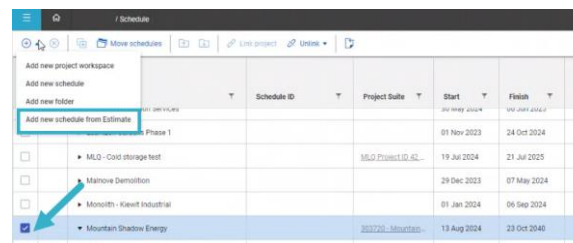
6. Select the checkboxes for the desired items you want to have rolled up in InEight Schedule.



7. Click **Save**.
 - This is the trigger to send the refreshed data over to Schedule.

ADD NEW SCHEDULE FROM ESTIMATE

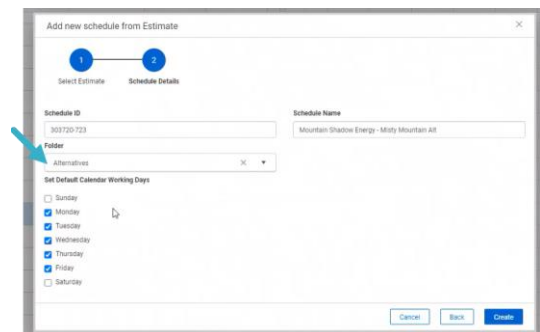
1. Within InEight Schedule, select the checkbox for the desired project workspace.
2. Select the **+ Add** button and then **Add new schedule from Estimate**.



3. Select the corresponding core project, and then the appropriate Estimate.



4. Click **Next**.
5. Optionally, select the appropriate Folder and then set the default calendar working days.
6. Click **Create**.



- That schedule is created, bringing in everything selected and opens up on the Schedule side.
- NOTE: your calendar hours per day in Schedule must lineup with your work hour shift arrangement in Estimate > Job Properties > Cost Basis for it to be a 1-to-1 calculation.

QUICK GUIDE ESTIMATE | SCHEDULE INTEGRATION



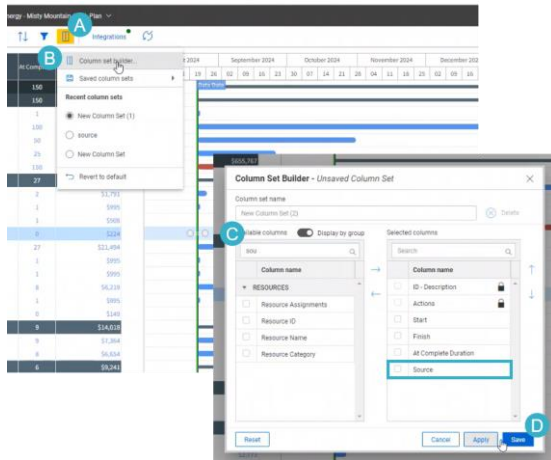
InEight
SCHEDULE



InEight
ESTIMATE

IDENTIFY THE SOURCE IN SCHEDULE

1. On the Menu Builder, select the **Column Set Builder** icon.
2. Ensure the **Source** column is added.
3. Click **Save**.



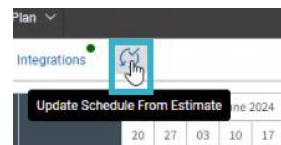
- As a result, the Source column indicates if the data is coming over from Estimate or Schedule.

ID - Description	Actions	Start	Finish	At Compl...	Source
Mountain Shadow Energy - Mi...	...	22 Aug 2024	19 Mar 2025	150	Estimate
Civil	...	22 Aug 2024	19 Mar 2025	150	Estimate
Grading	...	22 Aug 2024	23 Aug 2024	1	Estimate
Hand Backfill Area A	...	22 Aug 2024	8 Jan 2025	100	Estimate
Hand Excavation	...	22 Aug 2024	30 Oct 2024	50	Estimate
Machine Backfill Area A	...	22 Aug 2024	25 Sep 2024	25	Estimate
Machine Excavation	...	22 Aug 2024	19 Mar 2025	150	Estimate
Victory Foundation	...	22 Aug 2024	27 Sep 2024	27	Estimate
Anchors	...	22 Aug 2024	26 Aug 2024	1	Estimate
Asphalt Concrete Curb...	...	22 Aug 2024	23 Aug 2024	1	Estimate
Asphalt Concrete Demo	...	22 Aug 2024	22 Aug 2024	1	Estimate
Formwork	...	22 Aug 2024	22 Aug 2024	0	Estimate
Hand Excavate Sensiti...	...	22 Aug 2024	27 Sep 2024	27	Estimate

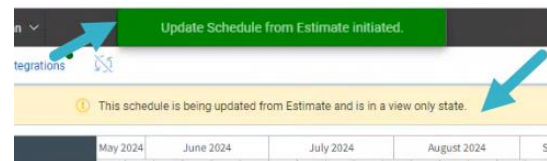
UPDATE SCHEDULE FROM ESTIMATE

Use this step when you're ready to update your schedule with costs and durations from the estimate.

1. Return to Schedule and click the **Update Schedule from Estimate** icon.



- A dialogue box and pop-up appear.

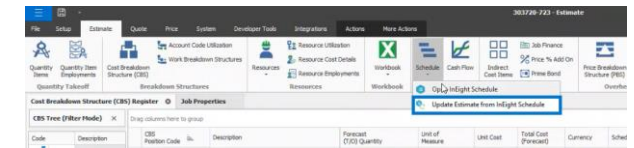


- Now you can begin tying that logic together so you can start scheduling your job.

UPDATE ESTIMATE FROM SCHEDULE

Use this step when you're ready to update your estimate with dates from the schedule.

1. Back on the Estimate > Schedule tab, select **Update Estimate from InEight Schedule** from the drop-down.



- You can now view the Start and Finish dates in the CBS.

Code	Description	CBS Position Code	In	Description	Forecast (Y/C)	Quantity	Unit of Measure	Unit Cost	Total Cost (Forecast)	Currency	Sched
1	Job										
2	Phase										
3	Phase % Add On										
4	Job Management										
5	General Expense										
6	General Expense										
7	General Expense										
8	General Expense										
9	General Expense										
10	General Expense										
11	General Expense										
12	General Expense										
13	General Expense										
14	General Expense										
15	General Expense										
16	General Expense										
17	General Expense										
18	General Expense										
19	General Expense										
20	General Expense										
21	General Expense										
22	General Expense										
23	General Expense										
24	General Expense										
25	General Expense										
26	General Expense										
27	General Expense										
28	General Expense										
29	General Expense										
30	General Expense										
31	General Expense										
32	General Expense										
33	General Expense										
34	General Expense										
35	General Expense										
36	General Expense										
37	General Expense										
38	General Expense										
39	General Expense										
40	General Expense										
41	General Expense										
42	General Expense										
43	General Expense										
44	General Expense										
45	General Expense										
46	General Expense										
47	General Expense										
48	General Expense										
49	General Expense										
50	General Expense										
51	General Expense										
52	General Expense										
53	General Expense										
54	General Expense										
55	General Expense										
56	General Expense										
57	General Expense										
58	General Expense										
59	General Expense										
60	General Expense										
61	General Expense										
62	General Expense										
63	General Expense										
64	General Expense										
65	General Expense										
66	General Expense										
67	General Expense										
68	General Expense										
69	General Expense										
70	General Expense										
71	General Expense										
72	General Expense										
73	General Expense										
74	General Expense										
75	General Expense										
76	General Expense										
77	General Expense										
78	General Expense										
79	General Expense										
80	General Expense										
81	General Expense										
82	General Expense										
83	General Expense										
84	General Expense										
85	General Expense										
86	General Expense										
87	General Expense										
88	General Expense										
89	General Expense										
90	General Expense										
91	General Expense										
92	General Expense										
93	General Expense										
94	General Expense										
95	General Expense										
96	General Expense										
97	General Expense										
98	General Expense										
99	General Expense										
100	General Expense										

- As a result, you can bring up your cash flow period, to make your cash flow curve.
- These total cost values are also being sent back to Schedule.
- You can perform a cost risk analysis in the tool as well.