



Explore API Documentation

SelfService_Control_ActualManHours

Version 1.0

Last Modified: 10/31/2023

Last Modified By: Litzy Mora

Change Log

This changelog only contains significant or notable changes to the revision. Any editorial type changes or minor changes are not included.

Revision	Change Date	Description	Modified By
1.0	6/6/2022	Initial draft	Litzy Mora

Contents

Change Log.....	2
Overview.....	3
Relationships and Dependencies.....	3
API Detail.....	3
Supported Filters.....	4
Fields.....	4
Field Descriptions.....	4
Sample.....	5
Data Validation.....	5

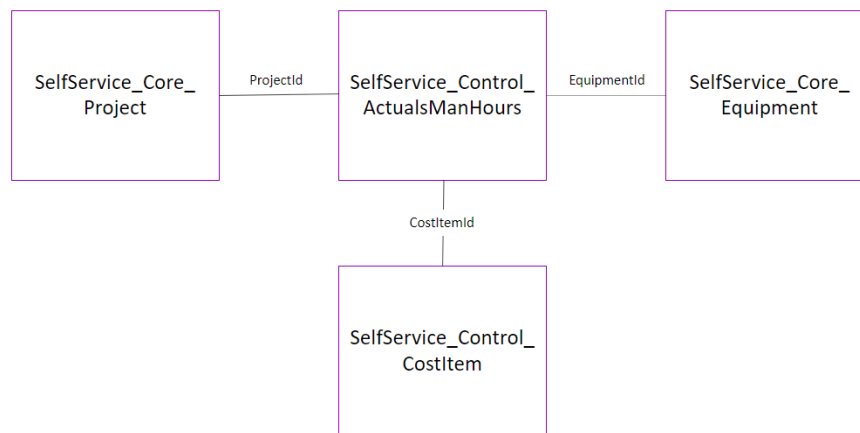
Overview

This API exposes actual manhours.

Relationships and Dependencies

From: Table	To: Table	Relationship	Cardinality ¹	Comment
SelfService_Control_Actual ManHours (AMH)	SelfService_Core_Project (P)	AMH. ProjectId = P.ProjectId	M:1	
SelfService_Control_Actual ManHours (AMH)	SelfService_Control_CostItem(CI)	AMH.CostItemId= CI.CostItemId	M:1	
SelfService_Control_Actual ManHours (AMH)	SelfService_Core_Equipment(E)	AMH. EquipmentId= E.EquipmentId	M:1	
SelfService_Control_Actual ManHours (AMH)	SelfService_Calendar (C)	AMH.PostedDate= C.CalendarDate	M:1	

Control_ActualsManHours



API Detail

Direction	From Project Suite
Pagination	50,000 Rows
Frequency	All Reporting APIs are used by calling a GET method at an interval determined by the customer. InEight suggests using these APIs on an infrequent basis (once per day) to avoid potential performance impact to live systems when the returned data set could be large.
Trigger Method(s)	All default OData filters are supported
Average Payload Size	Depends on date range selected

¹ 1:M = One to Many, 1:1 = One to One, M:1 = Many to one

APIM Name		SelfService_Control_ActualsManHours
Data Refresh/Delta/Incremental Loads		The data in this API will refresh every 15- 20 minutes
Project Suite	Starting Version	22.8
	Ending Version	N/A

Supported Filters

All default OData filters are supported by this API.

Fields

Name	Type	CharMaxLengt h	NumericPrecisio n	DatePrecisio n	Product	P K
ActualsHoursId	bigint	8	19	0	Control	X
ProjectId	bigint	8	19	0	Control	
CostItemId	bigint	8	19	0	Control	
PostedDate	date	3	10	0	Control	
Notes	nvarchar	4000	0	0	Control	
ManHours	decimal	13	28	15	Control	
EquipmentId	bigint	8	19	0	Control	
EquipmentHours	decimal	13	28	15	Control	
DocumentDate	datetime	8	23	3	Control	
PostedFromDate	datetime	8	23	3	Control	
PostedToDate	datetime	8	23	3	Control	
IncludedInSummary	bit	1	1	0	Control	
ActualsTypeId	bigint	8	19	0	Control	
ActualsTypeName	nvarchar	50	0	0	Control	
TransactionId	nvarchar	50	0	0	Control	
Reversal	bit	1	1	0	Control	
CreatedById	bigint	8	19	0	Control	
CreatedDate	datetime	8	23	3	Control	
ModifiedById	bigint	8	19	0	Control	
ModifiedDate	datetime	8	23	3	Control	
IsActive	bit	1	1	0	Control	
SourceSystemId	nvarchar	50	0	0	Control	
SourceSystemName	nvarchar	100	0	0	Control	

Field Descriptions

Name	Description	Example
ActualsHoursId	The unique identifier for the table	13572543
ProjectId	Unique identifier for a project	46

CostItemId	System generated id for Cost item	15260
PostedDate	The date that the actuals were posted.	2020-01-08
Notes	Notes section for the Man Hours	NULL
ManHours	Actual man hours	84.0000000000000000
EquipmentId	System generated code for equipment	NULL
EquipmentHours	Actual equipment hours	84.0000000000000000
DocumentDate	Date that the man hours was documented	2020-01-08 00:00:00.000
PostedFromDate	The date posted from	NULL
PostedToDate	The date posted to	NULL
IncludedInSummary	Indicates if record is included in summary	1
ActualsTypeId	The identifier associated to the actuals type	1
ActualsTypeName	Type of actual as configured in project settings	Confirmed
TransactionId	Unique identifier for the transaction	52b38be6-cd24-4b3b-ab52-939503086215
Reversal	indicates if the actual was reversed out of the Control through the reverse actuals option of the actions menu	0
CreatedById	Unique identifier for whoever created the import	1
CreatedDate	Date the import was created	2023-05-08 11:44:15.560
ModifiedById	Identifier for the user who last modified	-2
ModifiedDate	Date the item was last modified	2023-05-12 09:11:32.943
IsActive	When this field equals 0, then the cost item is no longer active and used in the project	0
SourceSystemId	Unique identifier for the source system of the record	NULL
SourceSystemName	Name of the source system of the record	NULL

Sample

```
{ "ActualsHoursId":1, "ProjectId":1, "CostItemId":9, "PostedDate":"2016-03-26", "Notes":null, "ManHours":0.0000000000000000, "EquipmentId":null, "EquipmentHours":0.0000000000000000, "DocumentDate":"2016-03-
```

```
26T00:00:00Z", "PostedFromDate": null, "PostedToDate": null, "IncludedInSummary": true, "ActualsType": 1, "ActualsTypeName": "Confirmed", "TransactionId": null, "Reversal": false, "CreatedBy": 1, "CreatedDate": "2017-02-04T03:02:47.103Z", "ModifiedBy": 1, "ModifiedDate": "2017-02-04T03:02:47.103Z", "IsActive": true, "SourceSystemId": null, "SourceSystemName": null}
```

Data Validation

Control > Workspaces > Actuals data block

Tasks	Task details	Actuals 12/29/2017 to 05/25/2023						Actuals 12/29/2017 to 05/25/2023			
		Actual units/MHr (to date)	Actual MHrs (to date)	CB productivity factor	Actual unit cost (to date)	Actual labor cost (to date)	Compensation factor (to date)	Actual qty (to date)	Actual MHrs/unit (to date)	CB MHrs/Unit (to date)	Actual cost (to date)
1	FINANCIAL RESUL...	0.000	3,207,471.240	0.695	\$ 954,331,201.650	\$ 73.587	1.103	0.958	3,348,747.349	-978,070.900	\$ 914,070,117.541
1.1	DIRECTS	0.001	2,416,041.300	0.667	\$ 131,157,208	\$ 72.027	1.125	2,050.014	1,178.549	-804,270.674	\$ 268,874,078.021
1.1.1	ANCHOR BOLTS D...	0.000	427,712.000	0.854	\$ 31,561,790.295	\$ 70.757	0.922	0.987	433,136.963	-62,493.103	\$ 31,166,484.500
1.1.1.1	CIVIL	0.000	109,731.000	0.914	\$ 7,573,043.651	\$ 66.543	0.920	0.977	112,304.979	-9,437.631	\$ 7,399,472.911
1.1.1.1.1	GRADING	0.000	94,828.000	0.944	\$ 6,477,522.372	\$ 66.234	0.928	0.985	96,300.917	-5,301.260	\$ 6,378,449.071
1.1.1.1.1.1	SITE CLEARING / ...	0.004	771.000	0.978	\$ 15,673.540	\$ 66.142	0.952	3.254	236.967	-17.200	\$ 50,995.700
1.1.1.1.1.1.1	Topsoil/Stripping ...	19.554	771.000	0.978	\$ 3.383	\$ 66.142	0.931	15,076.000	0.051	-17.200	\$ 50,995.700
1.1.1.1.1.1.1.1	EXCAVATION AND...	0.000	19,513.750	1.054	\$ 1,363,403.712	\$ 69.869	0.982	3.000	19,513.750	1,059.140	\$ 1,363,403.711
1.1.1.1.1.1.1.1.1	Excavator Exc. Lo...	24.734	1,495.500	0.708	\$ 2.789	\$ 69.124	0.660	37,064.000	0.040	-436.581	\$ 103,374.200
1.1.1.1.1.1.1.1.1.1	Haul - To Stockpile	54.290	1,117.500	1.099	\$ 1.360	\$ 73.813	0.777	60,669.000	0.018	111.047	\$ 82,485.900
1.1.1.1.1.1.1.1.1.1.1	Embankment Co...	10.580	4,668.500	0.952	\$ 6.247	\$ 66.098	0.930	49,394.000	0.095	-223.255	\$ 308,577.280
1.1.1.1.1.1.1.1.1.1.1.1	Stockpile / Waste ...	43.036	5,017.750	1.291	\$ 1.586	\$ 68.255	1.375	215,941.939	0.023	1,460.561	\$ 342,488.580
1.1.1.1.1.1.1.1.1.1.1.1.1	Load At Stockpile ...	22.964	7,095.500	1.015	\$ 3.192	\$ 73.301	0.994	162,943.305	0.044	108.369	\$ 520,110.720
1.1.1.1.1.1.1.1.1.1.1.1.1.1	Water Truck Supp...	0.027	119.000	1.328	\$ 2,014.883	\$ 53.504	1.294	3.160	37.658	39.000	\$ 6,367.030
1.1.1.1.1.1.1.1.1.1.1.1.1.1.1	SUBGRADE PREP...	0.000	4,775.500	0.338	\$ 0.000	\$ 69.418	0.000	0.000	0.000	-3,160.932	\$ 331,507.340
1.1.1.1.1.1.1.1.1.1.1.1.1.1.1.1	Subgrade Prepara...	0.181	359.500	0.172	\$ 360.311	\$ 65.357	0.005	65.210	5.513	-297.621	\$ 23,495.890
1.1.1.1.1.1.1.1.1.1.1.1.1.1.1.1.1	Subgrade Finish ...	59.614	293.000	0.997	\$ 1.228	\$ 73.183	0.527	17,467.000	0.017	-118.000	\$ 21,442.571
1.1.1.1.1.1.1.1.1.1.1.1.1.1.1.1.1.1	Subgrade Finish ...	26.811	2,077.500	0.268	\$ 2.639	\$ 70.754	0.245	55,699.000	0.037	-1,520.697	\$ 146,990.921
Subtotals 3198 (1 rows selected)		3,306,202.240						-1,049,732.150 \$ 931,639,881.030			