



## Explore API Documentation

# SelfService\_Control\_ActualQuantity

Version 1.0

Last Modified: 2/9/2024

Last Modified By: Natalie Takacs



## Change Log

This changelog only contains significant or notable changes to the revision. Any editorial type changes or minor changes are not included.

Revision	Change Date	Description	Modified By
1.0	12/17/2019	Initial draft	Litzy Mora
1.1	2/9/2024	Updated Overview section to include information about exposed records claimed in Plan without a sync to Control	Natalie Takacs

## Contents

---

Change Log.....	2
Overview.....	3
Relationships and Dependencies.....	3
API Detail.....	3
Supported Filters.....	4
Fields.....	4
Field Descriptions.....	5
Sample.....	5
Data Validation.....	6

## Overview

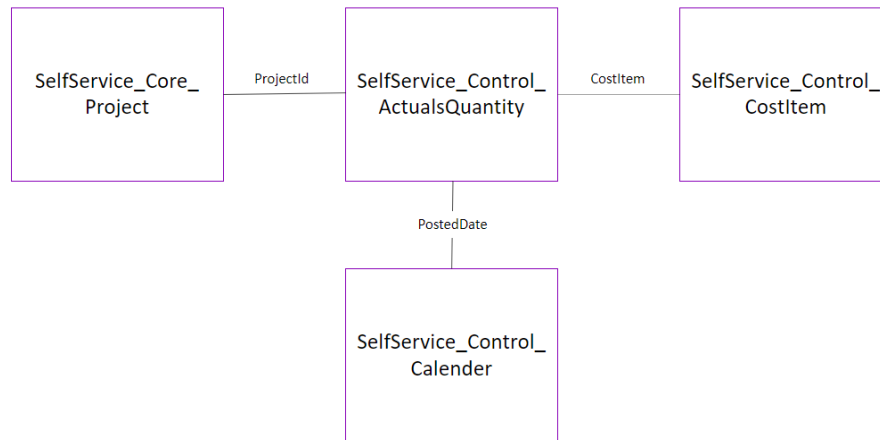
This API exposes actual quantities. Once quantities have been claimed in Plan, they will appear in this table regardless of whether a sync from Plan > Control has occurred or not. The source system on these records will populate with "Plan." After a sync has been performed, these specific records will update in the API accordingly.

Prior to syncing, these values will appear in the Control UI if the Estimated Actuals setting is turned ON. If this setting is OFF, then the values will not appear in the Control UI until a sync is performed.

## Relationships and Dependencies

From: Table	To: Table	Relationship	Cardinality <sup>1</sup>	Comment
<b>SelfService_Control_ActualsQuantity (AQ)</b>	SelfService_Core_Project(P)	AQ.ProjectId= P.ProjectId	M:1	
<b>SelfService_Control_ActualsQuantity (AQ)</b>	SelfService_Calendar (C)	C.CalendarDate= AQ.PostedDate	M:1	
<b>SelfService_Control_ActualsQuantity (AQ)</b>	SelfService_Control_CostItem (CI)	CI.CostItem= AQ.CostItem	M:1	

Control\_ActualsQuantity



## API Detail

Direction	From Project Suite
Pagination	50,000 Rows

<sup>1</sup> 1:M = One to Many, 1:1 = One to One, M:1 = Many to one

Frequency	All Reporting APIs are used by calling a GET method at an interval determined by the customer. InEight suggests using these APIs on an infrequent basis (once per day) to avoid potential performance impact to live systems when the returned data set could be large.	
Trigger Method(s)	All default OData filters are supported	
Average Payload Size	Depends on date range selected	
APIM Name	SelfService_Control_ActualsQuantity	
Replicate View	SelfService.vwControlActualsQuantity	
Data Refresh/Delta/Incremental Loads	The data in this API will refresh every 15- 20 minutes.	
Project Suite	Starting Version	22.8
	Ending Version	N/A

## Supported Filters

All default OData filters are supported by this API.

## Fields

Name	Type	Char Max Length	Numeric Precision	Scale	Product	PK
ActualsQuantityId	bigint	8	19	0	Control	X
Quantity	decimal	13	28	15	Control	
ProjectId	bigint	8	19	0	Control	
CostItemId	bigint	8	19	0	Control	
PostedDate	date	3	10	0	Control	
ActualsTypeId	bigint	8	19	0	Control	
ActualsTypeName	nvarchar	50	0	0	Control	
ForemanId	bigint	8	19	0	Control	
Notes	nvarchar	4000	0	0	Control	
DocumentDate	datetime	8	23	3	Control	
Status	nvarchar	50	0	0	Control	
PostedFromDate	datetime	8	23	3	Control	
PostedToDate	datetime	8	23	3	Control	
IncludedInSummary	bit	1	1	0	Control	
TransactionId	nvarchar	50	0	0	Control	
Reversal	bit	1	1	0	Control	
CreatedById	bigint	8	19	0	Control	
CreatedDate	datetime	8	23	3	Control	
ModifiedById	bigint	8	19	0	Control	
ModifiedDate	datetime	8	23	3	Control	
IsActive	bit	1	1	0	Control	
SourceSystemId	nvarchar	50	0	0	Control	
SourceSystemName	nvarchar	100	0	0	Control	

## Field Descriptions

Name	Description	Example
ActualsQuantityId	The unique identifier for the table	3668
Quantity	Actual quantity	3648.5000000000000000
ProjectId	Unique identifier for a project	4
CostItemId	System generated id for Cost item	503
PostedDate	The date that the actuals were posted.	2021-10-26
ActualsTypeId	The identifier associated to the actuals type	1
ActualsTypeName	Type of actual as configured in project settings	Confirmed
ForemanId	System generated id for the foreman	NULL
Notes	Notes section for the Man Hours	
DocumentDate	Date that the actual quantity was documented	NULL
Status	Actual status	Sent
PostedFromDate	The date posted from	2021-10-26 00:00:00.000
PostedToDate	The date posted to	2021-10-26 00:00:00.000
IncludedInSummary	Indicates if record is included in summary	1
TransactionId	Unique identifier for the transaction	9ba5b2f0-62d0-41b7-b295-0e9294005fcd
Reversal	indicates if the actual was reversed out of the Control through the reverse actuals option of the actions menu	0
CreatedById	Unique identifier for whoever created the import	18084
CreatedDate	Date the import was created	2021-10-26 17:45:02.193
ModifiedById	Identifier for the user who last modified	18084
ModifiedDate	Date the item was last modified	2021-10-26 18:05:08.697
IsActive	When this field equals 0, then the cost item is no longer active and used in the project	1
SourceSystemId	Unique identifier for the source system of the record	NULL
SourceSystemName	Name of the source system of the record	NULL

## Sample

```
{
  "ActualsQuantityId":1,
  "Quantity":120000.0000000000000000,
  "ProjectId":1,
  "CostItemId":8,
  "PostedDate":"2017-02-03",
  "ActualsTypeId":1,
  "ActualsTypeName":"Confirmed",
  "ForemanId":null,
  "Notes":"","DocumentDate":null,
  "Status":"Sent",
  "PostedFromDate":"2017-02-03T00:00:00Z",
  "PostedToDate":"2017-02-03T00:00:00Z",
  "IncludedInSummary":true,
  "TransactionId":null,
  "Reversal":false,
  "CreatedById":60,
  "CreatedDate":"2017-02-03T18:31:01.553Z",
  "ModifiedById":60,
  "ModifiedDate":"2017-02-04T03:01:46.657Z",
  "IsActive":true,
  "SourceSystemId":null,
  "SourceSystemName":null
}
```

## Data Validation

Control > Workspaces > Actuals data block

Tasks			Task details			Actuals 12/29/2017 to 05/25/2023					Actuals 12/29/2017 to 05/25/2023				
CBS position	Description	Resources	Forecast (FD) qty	UoM	Actual qty (to date)	Actual Mhrs/unit (to date)	CB Mhrs G/L (to date)	Actual cost (to date)	CB actual cost G/L (to date)	Actual vendor Mhrs (to date)	Actual qty (to date)	Actual Mhrs/unit (to date)	CB Mhrs G/L (to date)	Actual cost (to date)	
1	FINANCIAL RESUL...		1.000	Each	0.950	3,375.649 472	-978.071 738	\$ 914,070.117 540	(\$ 118,311,492 299)	0.000	0.958	3,348,747.349	-978.070 900	\$ 914,070.117 540	
1.1	DIRECTS		2,155.210	Each	2,018.809	1,196.766	-804,271.513	\$ 268,874,078.020	(\$ 73,689,150.149)	0.000	2,050.014	1,178.549	-804,270.674	\$ 268,874,078.020	
1.1.1	ANCHOR BOLTS D...		1.000	Each	0.964	443,750.934	-62,493.939	\$ 31,166,484.500	(\$ 8,025,372.939)	0.000	0.987	433,136.963	-62,493.103	\$ 31,166,484.500	
1.1.1.1	CIVIL		1.000	Each	0.977	112,371.275	-9,437.631	\$ 7,399,472.910	(\$ 1,262,057.012)	0.000	0.977	112,304.979	-9,437.631	\$ 7,399,472.910	
1.1.1.1.1	GRADING		1.000	PLS	0.985	96,316.083	-5,301.260	\$ 6,378,449.070	(\$ 873,423.000)	0.000	0.985	96,300.917	-5,301.260	\$ 6,378,449.070	
1.1.1.1.1.1	SITE CLEARING / ...		3.254	AcresTest	3.254	236.967	-17.200	\$ 50,995.700	(\$ 3,513.544)	0.000	3.254	236.967	-17.200	\$ 50,995.700	
1.1.1.1.1.1.1	Topsoil/Shipping ...	7	15,076.000	CY	15,076.000	0.051	-17.200	\$ 50,995.700	(\$ 3,513.544)	0.000	15,076.000	0.051	-17.200	\$ 50,995.700	
1.1.1.1.1.1.1.1	EXCAVATION AND...		1.000	PLS	1.000	19,513.770	1,059.140	\$ 1,363,403.710	\$ 48,574.016	0.000	1.000	19,513.750	1,059.140	\$ 1,363,403.710	
1.1.1.1.1.1.1.1.1	Excavator Exc. Lo...	9	37,064.000	CY	37,064.000	0.040	-436.581	\$ 103,374.200	(\$ 36,155.451)	0.000	37,064.000	0.040	-436.581	\$ 103,374.200	
1.1.1.1.1.1.1.1.1.1	Haul - To Stockpile	2	60,669.000	CY	60,669.000	0.018	111.047	\$ 82,485.900	(\$ 18,405.363)	0.000	60,669.000	0.018	111.047	\$ 82,485.900	
1.1.1.1.1.1.1.1.1.1.1	Embankment Co...	9	49,394.000	CY	49,394.000	0.095	-223.255	\$ 308,577.280	(\$ 21,935.568)	0.000	49,394.000	0.095	-223.255	\$ 308,577.280	
1.1.1.1.1.1.1.1.1.1.1.1	Stockpile / Waste ...	2	215,941.939	CY	215,941.939	0.023	1,460.561	\$ 342,488.580	\$ 126,951.553	0.000	215,941.939	0.023	1,460.561	\$ 342,488.580	
1.1.1.1.1.1.1.1.1.1.1.1.1	Load At Stockpile ...	5	162,943.306	CY	162,943.306	0.044	108.369	\$ 520,110.720	(\$ 5,155.954)	0.000	162,943.306	0.044	108.369	\$ 520,110.720	
1.1.1.1.1.1.1.1.1.1.1.1.1.1	Water Truck Supp...	2	3,160	Wk	3,160	37.658	39.000	\$ 6,367.020	\$ 1,674.786	0.000	3,160	37.658	39.000	\$ 6,367.020	
1.1.1.1.1.1.1.1.1.1.1.1.1.1.1	SUBGRADE PREP...		1.000	PLS	0.751	6,357.594	-3,160.932	\$ 331,507.340	(\$ 220,984.102)	0.000	0.000	0.000	-3,160.932	\$ 331,507.340	
1.1.1.1.1.1.1.1.1.1.1.1.1.1.1.1	Subgrade Prepara...	7	600.000	SY	65.210	5.513	-297.621	\$ 23,495.890	(\$ 19,475.662)	0.000	65.210	5.513	-297.621	\$ 23,495.890	
1.1.1.1.1.1.1.1.1.1.1.1.1.1.1.1.1	Subgrade Finish ...	7	17,467.000	SY	17,467.000	0.017	-118.000	\$ 21,442.570	(\$ 10,142.337)	0.000	17,467.000	0.017	-118.000	\$ 21,442.570	
1.1.1.1.1.1.1.1.1.1.1.1.1.1.1.1.1.1	Subgrade Finish ...	7	56,619.000	SY	55,699.000	0.037	-1,520.697	\$ 146,990.920	(\$ 111,036.608)	0.000	55,699.000	0.037	-1,520.697	\$ 146,990.920	
Subtotals: 3198 (1 rows selected)															

