



Explore API Documentation

SelfService_Control_CommittedCostSummary Version 2.0

Last Modified: 10/31/2023



Change Log

This changelog only contains significant or notable changes to the revision. Any editorial type changes or minor changes are not included.

Revision	Change Date	Description	Modified By
1.0	12/11/2020	Initial draft, released at 20.9.6	Natalie Takacs
1.1	8/9/2022	Updated data refresh time	Estefany Puc Nieto
2.0	3/24/2023	Removed Core_Costitem reference and added Control_CostItem	Suresh Aitha

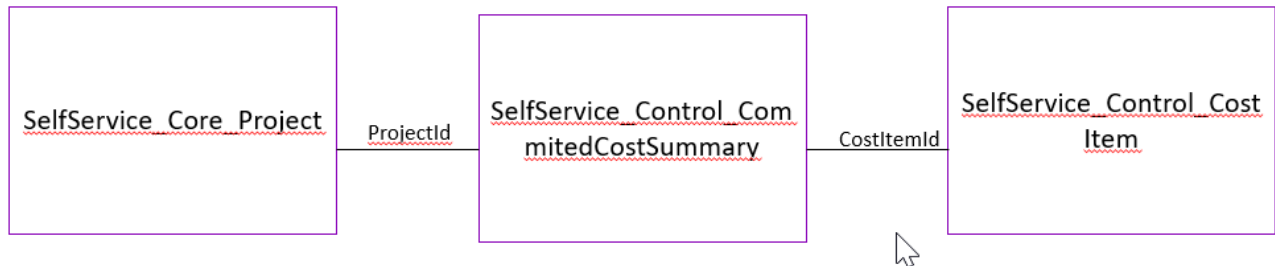
Contents

Change Log.....	2
Overview	4
Relationships and Dependencies	4
Supported Filters.....	5
Fields	5
Field Descriptions.....	5
Sample	6
Data Validation	7

Overview

The **SelfService_Control_CommittedCostSummary** API is intended to provide Committed Cost information at the Cost Item level, split out by Cost Category.

Relationships and Dependencies



From: Table	To: Table	Relationship	Cardinality	Comment
SelfService_Control_CommittedCostSummary (CCS)	SelfService_Core_Project (CP)	CCS.ProjectId = CP.ProjectId	M:1	
SelfService_Control_CommittedCostSummary (CCS)	SelfService_Control_CostItem (CI)	CCS.CostItemId = CI.CostItemId	1:1	

API Detail

Direction	From Project Suite	
Pagination	50,000 Rows	
Frequency	All Reporting APIs are used by calling a GET method at an interval determined by the customer. InEight suggests using these APIs on an infrequent basis (once per day) to avoid potential performance impact to live systems when the returned data set could be large.	
Trigger Method(s)	All default OData filters are supported	
Average Payload Size	Depends on date range selected	
APIM Name	SelfService_Control_CommittedCostSummary	
API URL	https://api.ineight.com/reporting/v1/{tenantPrefix}/odata/SelfService_Control_CommittedCostSummary	
Replicate View	SelfService.vwControlCommittedCostSummary	
Data Refresh/Delta/Incremental Loads	The data in this API will refresh ~20 minutes. Data can be incrementally loaded after first full refresh.	
Project Suite	Starting Release	22.12
	Ending Release	

Supported Filters

All default OData filters are supported by this API.

Fields

Column Name	Data Type	Char Max Length	Numeric Precision	Numeric Scale	Date Precision	Is Nullable	PK
CostItemId	Bigint	Null	19	0	Null	N	X
TotalCommittedCost	Decimal	Null	28	15	Null	Y	
OpenCommittedCost	Decimal	Null	28	15	Null	Y	
LaborOpenCommittedCost	Decimal	Null	28	15	Null	Y	
ConstructionEquipmentOpenCost	Decimal	Null	28	15	Null	Y	
FOMRentedEquipmentOpenCommittedCost	Decimal	Null	28	15	Null	Y	
MaterialsOpenCommittedCost	Decimal	Null	28	15	Null	Y	
SubcontractOpenCommittedCost	Decimal	Null	28	15	Null	Y	
FeesOpenCommittedCost	Decimal	Null	28	15	Null	Y	
AllowanceOpenCommittedCost	Decimal	Null	28	15	Null	Y	
GAOpenCommittedCost	Decimal	Null	28	15	Null	Y	
UndefinedOpenCommittedCost	Decimal	Null	28	15	Null	Y	
SuppliesOpenCommittedCost	Decimal	Null	28	15	Null	Y	
ProjectId	Bigint	Null	19	0	Null	Y	
SourceSystemId	Nvarchar	50	Null	Null	Null	Y	
SourceSystemName	Nvarchar	100	Null	Null	Null	Y	
CreatedById	Bigint	Null	19	0	Null	Y	
CreatedDate	Datetime	Null	Null	Null	8	Y	
ModifiedById	Bigint	Null	19	0	Null	Y	
ModifiedDate	Datetime	Null	Null	Null	8	Y	
IsActive	Bit	Null	Null	Null	Null	N	

Field Descriptions

Name	Description	Example
CostItemId	Unique identifier for Cost Items assigned in Control	38635
TotalCommittedCost	Total committed cost for the cost item	47697.00
OpenCommittedCost	Open committed cost for the cost item	7900.00
LaborOpenCommittedCost	Open committed cost for the Labor cost category	16553.00
ConstructionEquipmentOpenCost	Open committed cost for the Construction Equipment cost category	1328.00
FOMRentedEquipmentOpenCommittedCost	Open committed cost for the FOM Rented Equipment cost category	7435.00
MaterialsOpenCommittedCost	Open committed cost for the Materials cost category	1458.00

SubcontractOpenCommittedCost	Open committed cost for the Subcontract cost category	8136.00
FeesOpenCommittedCost	Open committed cost for the Fees cost category	1458.00
AllowanceOpenCommittedCost	Open committed cost for the Allowance cost category	6050.00
GAOpenCommittedCost	Open committed cost for the GA cost category	5044.00
UndefinedOpenCommittedCost	Open committed cost for the Undefined cost category	13780.00
SuppliesOpenCommittedCost	Open committed cost for the Supplies cost category	4001.00
ProjectId	Unique identifier assigned by the system to each project	1183
SourceSystemId	Unique identifier assigned to the source system	1
SourceSystemName	Name of the source system	SAP
CreatedById	Unique identifier of the user that created the data record	52252
CreatedDate	Date record was created	2019-12-17 12:53:44.587
ModifiedById	Unique identifier of the user that modified the data record	40757
ModifiedDate	Date the record was modified in application	2019-12-17 12:53:44.587
IsActive	Indicator if record is active or soft deleted	True

Sample

```
{
  https://api.ineight.com/reporting/v1/{tenantPrefix}/odata/SelfService_Control_CommittedCostSummary
  [?$expand][&$filter][&$select][&$orderby][&$top][&$skip][&$count]
}
```

Data Validation

You can add the Committed Cost to your data block from the “Choose columns” menu.

Figure 1: Control > Workspaces > Choose columns

