



Explore API Documentation

SelfService_Control_CostItemActuals

Version 1.2

Last Modified: 10/31/2023

Last Modified By: Litzy Mora



Change Log

This changelog only contains significant or notable changes to the revision. Any editorial type changes or minor changes are not included.

Revision	Change Date	Description	Modified By
1.0	6/19/2019	Initial draft	Chase Denton
1.1	7/8/2021	Added Actuals Type, Reversal, and Transaction Id fields	Natalie Takacs
1.2	8/9/2022	Updated data refresh time	Estefany Puc Nieto
1.3	12/22/2022	Updated pagination	Litzy Mora

Contents

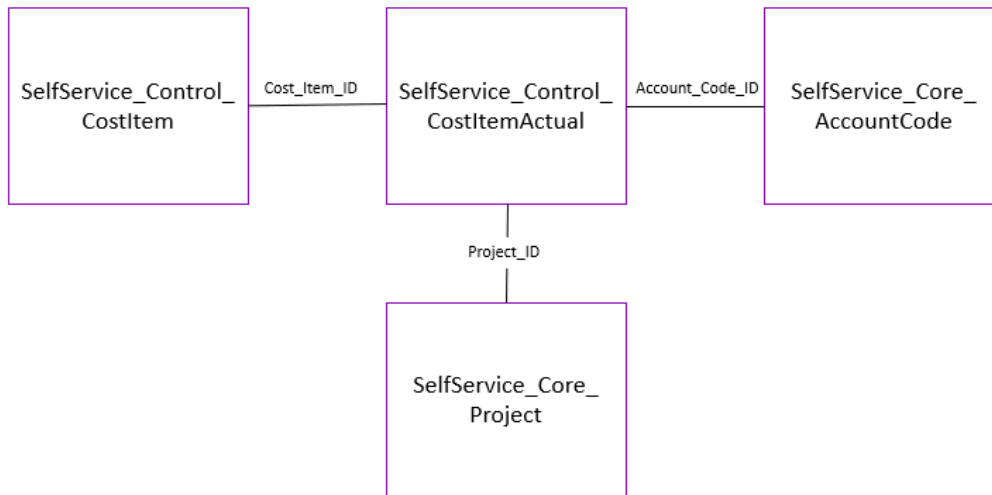
Change Log.....	2
Overview.....	3
API Detail.....	3
Supported Filters.....	4
Fields.....	4
Field Descriptions.....	5

Overview

This API contains information sourced from Control about your project's actual cost and Hours broken out by Cost Item.

Relationships and Dependencies

From: Table	To: Table	Relationship	Cardinality ¹	Comment
SelfService_Control_CostItemActuals(CIA)	SelfService_Control_CostItem(CI)	CIA.Cost_Item_Id= CI.Cost_Item_Id	1:M	
SelfService_Control_CostItemActuals(CIA)	SelfService_Core_AccountCode(AC)	CIA.Account_Code_Id= AC.Account_Code_Id	1:M	
SelfService_Control_CostItemActuals(CIA)	SelfService_Core_Project(P)	CIA.Project_Id= P.Project_Id=	1:M	



API Detail

Direction	From Project Suite
Pagination	5,000 Rows
Frequency	All Reporting APIs are used by calling a GET method at an interval determined by the customer. InEight suggests using these APIs on an infrequent basis (once per day) to avoid potential performance impact to live systems when the returned data set could be large.
Trigger Method(s)	All default OData filters are supported

¹ 1:M = One to Many, 1:1 = One to One, M:1 = Many to one

Average Payload Size		Depends on date range selected
APIM Name		SelfService_Control_CostItemActuals
Data Refresh/Delta/Incremental Loads		The data in this API will refresh every 20 minutes.
Project Suite	Starting Version	V1.0
	Ending Version	V1.01

Supported Filters

All default OData filters are supported by this API.

Fields

Name	Type	CharMaxLength	NumericPrecision	DatePrecision	Product	PK
Actuals_Id	bigint	NULL	19	NULL	Control	X
Project_Id	bigint	NULL	19	NULL	Core	
CostItem_Id	bigint	NULL	19	NULL	Control	
Posted_Date	datetime	NULL	NULL	3	Control	
Foreman_Id	bigint	NULL	19	NULL	Control	
Notes	nvarchar	4000	NULL	NULL	Control	
Claimed_Man_Hours	decimal	NULL	22	NULL	Control	
Equipment_Id	bigint	NULL	19	NULL	Control	
Claimed_Equipment_Hours	decimal	NULL	22	NULL	Control	
Claimed_Quantity	decimal	NULL	22	NULL	Control	
Claimed_Cost_Category_Id	bigint	NULL	19	NULL	Control	
Claimed_Cost	decimal	NULL	22	NULL	Control	
Account_Id	bigint	NULL	19	NULL	Control	
Source_System_Id	nvarchar	50	NULL	NULL	Control	
Source_System_Name	nvarchar	100	NULL	NULL	Control	
Created_By_Id	bigint	NULL	19	NULL	Control	
Created_Date	datetime	NULL	NULL	3	Control	
Modified_By_Id	bigint	NULL	19	NULL	Control	
Modified_Date	datetime	NULL	NULL	3	Control	
Is_Active	bit	NULL	NULL	NULL	Control	
Document_Date	datetime	NULL	NULL	3	Control	
Claimed_Quantity_Status	nvarchar	50	NULL	NULL	Control	
Posted_From_Date	datetime	NULL	NULL	3	Control	
Posted_To_Date	datetime	NULL	NULL	3	Control	
Account_Code_Id	bigint	NULL	19	NULL	Control	
Id	bigint	NULL	19	NULL	Control	
Actuals_Type	nvarchar	20	NULL	NULL	Control	
Transaction_Id	nvarchar	50	NULL	NULL	Control	
Reversal	Bit	NULL	NULL	NULL	Control	

Field Descriptions

Name	Description	Example
Actuals_Id	System generated code used to join other Data Connections together	235049
Project_Id	System generated Project id	1,2,3
CostItem_Id	System generated Id for Cost item	8
Posted_Date	The date the budget, forecast, etc. was posted to the Cost item	2019-04-03 00:00:00.000
Foreman_Id	System generated code for the foreman associated to the Cost item	NULL
Notes	Notes section for the Cost item	1
Claimed_Man_Hours	Claimed number of hours worked	0.000000000000
Equipment_Id	System generated code for equipment on the cost item	NULL
Claimed_Equipment_Hours	Claimed number of hours of equipment usage	0.000000000000
Claimed_Quantity	Claimed amount of equipment used	0.000000000000
Claimed_Cost_Category_Id	The ID for the category of claimed items	32
Claimed_Cost	The total cost of the claimed items	100.000000000000
Account_Id	System generated code for the tenant	0
Source_System_Id	Unique identifier for the source system of the record	NULL
Source_System_Name	Name of the source system of the record	NULL
Created_By_Id	The user Id that created the record	1
Created_Date	The date the record was created	2019-04-15 11:00:11.993
Modified_By_Id	The user Id that modified the record	1
Modified_Date	The date that the record was modified	2019-04-15 07:25:43.720
Is_Active	When this field equals 0, then the cost item is no longer active and used in the project	1 = Active, 0 = Inactive
Document_Date	Date that the cost item was documented	2019-04-15 10:19:27.813
Claimed_Quantity_Status	The status of the claimed amount of equipment used	Approved
Posted_From_Date	The date posted from	2019-04-03 00:00:00.000

Posted_To_Date	The date posted to	2019-04-03 00:00:00.000
Account_Code_Id	System generated Id for Account codes	52
Id	WBS phase code	58526
Actuals_Type	indicator of why type of actuals that row indicates example: Estimated, Confirmed, Progress	Confirmed
Transaction_Id	Unique identifier for the transaction	1c3783d4-67df-478e-bac6-cbbac54b74cb
Reversal	indicates if the actual was reversed out of the Control through the reverse actuals option of the actions menu	

Sample

```
{
  "Actuals_id":0,"Project_id":0,"Cost_item_id":0,"Posted_date":null,"Foreman_id":null,
  "Notes":null,"Claimed_man_hours":null,"Equipment_id":null,"Claimed_equipment_hours":null,
  "Claimed_Qty":null,"Claimed_cost_category_id":null,"Cost_category_description":null,
  "Claimed_cost":null,"Account_id":0,"Source_system_id":null,"Source_system_name":null,
  "Created_by_id":0,"Created_date":"1970-01-01T00:00:00Z",
  "Modified_by_id":0,"Modified_date":"1970-01-01T00:00:00Z",
  "Is_active":false,"Document_date":null,"Claimed_quantity_status":null,
  "Posted_from_date":null,"Posted_to_date":null,"Account_code_id":null,"Id":null,"Actuals_type":null,
  "Transaction_id":null,"Reversal":null
}
```

Validation