



Explore API Documentation

SelfService_Core_AccountCode

Version 1.0

Last Modified: 10/24/2023

Last Modified By: Litzy Mora

Change Log

This changelog only contains significant or notable changes to the revision. Any editorial type changes or minor changes are not included.

| Revision | Change Date | Description | Modified By |
|----------|-------------|--------------------------------|--------------|
| 0.01 | 6/19/2019 | Initial draft | Chase Denton |
| 1.1 | 12/21/2021 | Added new columns | Chase Denton |
| 1.2 | 11/4/2022 | Added relationships and sample | Litzy Mora |

Contents

| | |
|-------------------------------------|---|
| Change Log..... | 2 |
| Relationships and Dependencies..... | 2 |
| API Detail..... | 3 |
| Supported Filters..... | 4 |
| Fields..... | 4 |
| Field Descriptions..... | 4 |
| Sample | 5 |
| Data Validation | 5 |

Overview

This API exposes metadata about your organization's Account Codes.

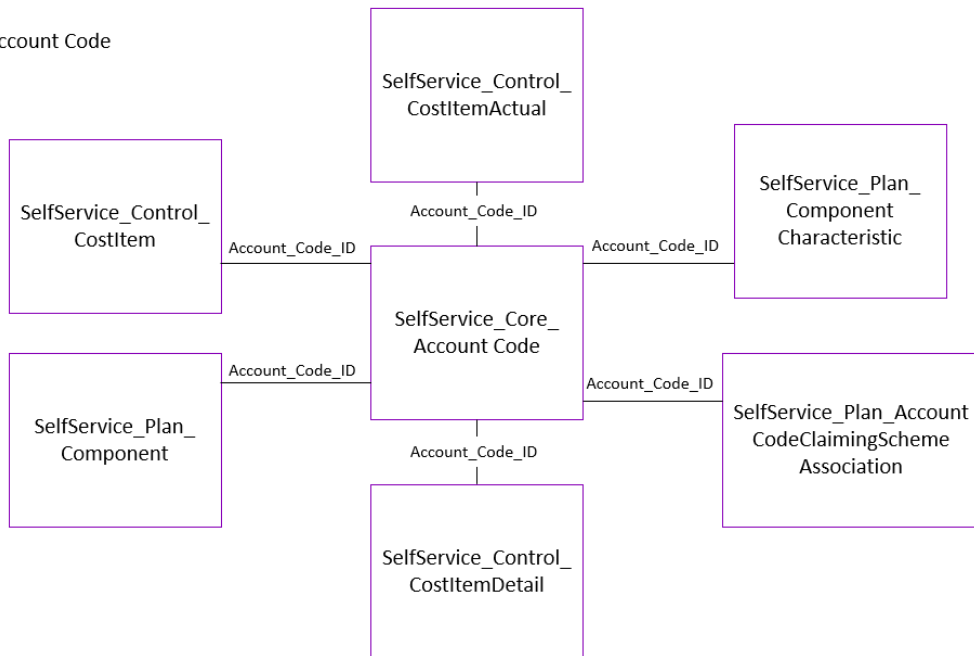
Relationships and Dependencies

| From: Table | To: Table | Relationship | Cardinality ¹ | Comment |
|--|---|-------------------------------------|--------------------------|---------|
| SelfService_Core_AccountCode (AC) | SelfService_Plan_Component (C) | AC.AccountCodeId=Comp.AccountCodeId | 1:M | |
| SelfService_Core_AccountCode (AC) | SelfService_Plan_AccountCode ClaimingSchemeAssociation (ACCS) | AC.AccountCodeId=ACCS.AccountCodeId | 1:M | |

¹ 1:M = One to Many, 1:1 = One to One, M:1 = Many to one

| | | | | |
|--|---|-------------------------------------|-----|--|
| SelfService_Core_AccountCode (AC) | SelfService_Control_CostItem(CI) | AC.AccountCodeId= CI.AccountCodeId | 1:M | |
| SelfService_Core_AccountCode (AC) | SelfService_Control_CostItemActual(CIA) | AC.AccountCodeId= CIA.AccountCodeId | 1:M | |
| SelfService_Core_AccountCode (AC) | SelfService_Control_CostItemDetail(CID) | AC.AccountCodeId= CID.AccountCodeId | 1:M | |
| SelfService_Core_AccountCode (AC) | SelfService_Plan_Component Characteristic(CC) | AC.AccountCodeId= CC.AccountCodeId | 1:M | |

Core_Account Code



API Detail

| | |
|----------------------|---|
| Direction | From Project Suite |
| Pagination | 50,000 Rows |
| Frequency | All Reporting APIs are used by calling a GET method at an interval determined by the customer. InEight suggests using these APIs on an infrequent basis (once per day) to avoid potential performance impact to live systems when the returned data set could be large. |
| Trigger Method(s) | All default OData filters are supported |
| Average Payload Size | Depends on date range selected |
| APIM Name | SelfService_Core_AccountCode |

| | | |
|--------------------------------------|------------------|--|
| Data Refresh/Delta/Incremental Loads | | The data in this API is on a trigger-based refresh, fresh data should appear in 5 minutes or less. |
| Project Suite | Starting Version | 22.8 |
| | Ending Version | N/A |

Supported Filters

All default OData filters are supported by this API.

Fields

| Name | Type | CharMaxLength | NumericPrecision | DatePrecision | Product | PK |
|-----------------------------------|----------------|---------------|------------------|---------------|---------|----|
| AccountCodeId | bigint | NULL | 19 | NULL | Core | X |
| Account_code_display | nvarchar | 250 | NULL | NULL | Core | |
| Account_code_description | nvarchar | 255 | NULL | NULL | Core | |
| ParentId | bigint | NULL | 19 | NULL | Core | |
| Modified_Date | datetimeoffset | NULL | NULL | 7 | Core | |
| IsActive | bit | NULL | NULL | NULL | Core | |
| IsTerminal | bit | NULL | NULL | NULL | Core | |
| PrimaryAutoQuantity | bit | NULL | NULL | NULL | Core | |
| ContributePrimarytoPrimary | bit | NULL | NULL | NULL | Core | |

Field Descriptions

| Name | Description | Example |
|---------------------------------|--|------------------------------------|
| AccountCodeId | System generated ID for Account codes | 17 |
| Account_code_display | Used for grouping historical like-data for use in future estimates | 00.06.04 |
| Account_code_description | Text description of an Account Code | OH - Business Development |
| ParentId | The parent Account_code_id used for hierarchy logic | 22 |
| Modified_Date | The date that the record was created or changed | 2019-05-23 07:06:13.0362593 +00:00 |
| IsActive | When this field equals 0, then the cost item is no longer active and used in the project | Active = 1, Inactive = 0 |
| IsTerminal | When this field equals 1, cost item is lowest level of Cost Breakdown Structure hierarchy, and has the | 1 |

| | | |
|-----------------------------------|--|---|
| | capability to accept cost and quantity | |
| PrimaryAutoQuantity | When the field equals 1, The primary quantity is the auto quantity | 1 |
| ContributePrimarytoPrimary | When the field equals 1, the account code contributes primary quantity to primary quantity | 1 |

Sample

```
{
  "AccountCodeId":1,"Account_code_display":"00","Account_code_description":"Overhead",
  "ParentId":null,"PrimaryUOMId":111,"PrimaryAutoQuantity":true,"SecondaryUOMId":116,
  "SecondaryAutoQuantity":true,"CurrencyId":1,"CreatedById":1,"CreatedDate":"2017-01-26T16:48:25.7787667Z",
  "ModifiedById":124164,"Modified_Date":"2022-07-13T06:26:47.3095796Z","IsActive":true,"ContributePrimarytoPrimary":false,"ContributePrimarytoSecondary":false,
  "ContributeSecondarytoSecondary":false,"IsTerminal":false,"SourceSystemId":"00","SourceSystemName":null,
  "PublishedAccountId":null,"StagingStatusId":null,"StagingStatusName":null,"IsStage":false,"IsFlagDisable":false,
  "IsRemoveChildFlag":false,"SafetyNotes":"Core _ SAFETY","EnvironmentalNotes":"Core _ ENVIRONMENTAL",
  "QualityNotes":"Core _ QUALITY","AccountCodeOperationTypeId":2,"AccountCodeOperationTypeName":"Update",
  "PreviousParentId":null,"ReplaceAccountCodeId":null
}
```

Data Validation

Master Data libraries > Account Codes

| Master data libraries / Account codes | | | | | | | | 22-10-04-701 | | | | | |
|---|---|-------------|-----------|---------------|------------------|--------------------|-------------------------------|--|--|--|--|--|--|
| | | | | | | | | PUBLISHED STAGING AUDIT LOG IMPORT LOG PUBLISH LOG | | | | | |
| Account code | Description | UoM primary | Currency | UoM secondary | Auto qty primary | Auto qty secondary | Contribute primary to primary | | | | | | |
| <input type="checkbox"/> 00 | Overhead | PAC | US Dollar | AU | On | On | Off | | | | | | |
| <input type="checkbox"/> 00.03 | OH - Get Work | PLS | US Dollar | | On | On | Off | | | | | | |
| <input type="checkbox"/> 00.03.01 | OH - Estimating - Engineering | MWk | US Dollar | KS | On | On | Off | | | | | | |
| <input type="checkbox"/> 00.03.01.002 | 02 | MWk | US Dollar | KS | Off | Off | Off | | | | | | |
| <input type="checkbox"/> 00.03.01.002.01 | OH - Estimating - Engineering - Management | MWk | US Dollar | KS | Off | On | On | | | | | | |
| <input type="checkbox"/> 00.03.01.010 | DIES | MWk | US Dollar | KS | On | On | On | | | | | | |
| <input type="checkbox"/> 00.03.01.010.02Re | OH - Estimating - Engineering - Geotech | MWk | US Dollar | KS | On | On | On | | | | | | |
| <input type="checkbox"/> 00.03.01.010.02Re.04 | OH - Estimating - Engineering - Geotech | MWk | US Dollar | KS | On | On | On | | | | | | |
| <input type="checkbox"/> 00.03.01.010.08 | OH - Estimating - Engineering - Landscape / Aesthetics | MWk | US Dollar | KS | On | On | On | | | | | | |
| <input type="checkbox"/> 00.03.01.010.10 | OH - Estimating - Engineering - Drainage | MWk | US Dollar | KS | On | On | On | | | | | | |
| <input type="checkbox"/> 00.03.01.010.12 | OH - Estimating - Engineering - Utilities | MWk | US Dollar | KS | On | On | On | | | | | | |
| <input type="checkbox"/> 00.03.01.010.14 | OH - Estimating - Engineering - Maint of Traffic | SF | US Dollar | SF | On | On | Off | | | | | | |
| <input type="checkbox"/> 00.03.01.010.16 | OH - Estimating - Engineering - Pavement | MWk | US Dollar | KS | On | On | On | | | | | | |
| <input type="checkbox"/> 00.03.01.010.18 | OH - Estimating - Engineering - Concrete / Structures | MWk | US Dollar | KS | On | On | On | | | | | | |
| <input type="checkbox"/> 00.03.01.010.20 | OH - Estimating - Engineering - Structural Steel (No Bridges) | SF | US Dollar | SF | On | On | Off | | | | | | |
| <input type="checkbox"/> 00.03.01.010.22 | OH - Estimating - Engineering - Pipe | MWk | US Dollar | KS | On | On | On | | | | | | |
| <input type="checkbox"/> 00.03.01.010.24 | OH - Estimating - Engineering - Mechanical | MWk | US Dollar | KS | On | On | On | | | | | | |
| <input type="checkbox"/> 00.03.01.010.26 | OH - Estimating - Engineering - Track | MWk | US Dollar | KS | On | On | On | | | | | | |
| <input type="checkbox"/> 00.03.01.010.28 | OH - Estimating - Engineering - Electrical | MWk | US Dollar | MH | On | On | On | | | | | | |
| <input type="checkbox"/> 00.03.01.010.30 | OH - Estimating - Engineering - Electr Transmission | MWk | US Dollar | KS | On | On | On | | | | | | |
| <input type="checkbox"/> 00.03.01.010.32 | OH - Estimating - Engineering - Electr Substation | MWk | US Dollar | KS | On | On | On | | | | | | |