



## Explore API Documentation

# SelfService\_Core\_ProjectEmployee

Version 1.2

Last Modified: 10/24/2023

Last Modified By: Litzy Mora

## Change Log

This changelog only contains significant or notable changes to the revision. Any editorial type changes or minor changes are not included.

Revision	Change Date	Description	Modified By
1.0	2/20/2020	Initial draft	Natalie Takacs
1.1	10/30/2020	Added two new fields, PrimaryCompany and Supervisor at 20.7 release level, and updated the data validation section	Natalie Takacs
1.2	4/5/2021	Added EmployeeDisplay and note about Version API; updated join information	Natalie Takacs
1.3	11/4/2022	Added Relationships and Sample	Litzy Mora

## Contents

---

Change Log.....	2
Overview.....	3
Relationships and Dependencies.....	3
API Detail.....	4
Supported Filters.....	4
Fields.....	4
Field Descriptions.....	5
Sample .....	7
Data Validation .....	7

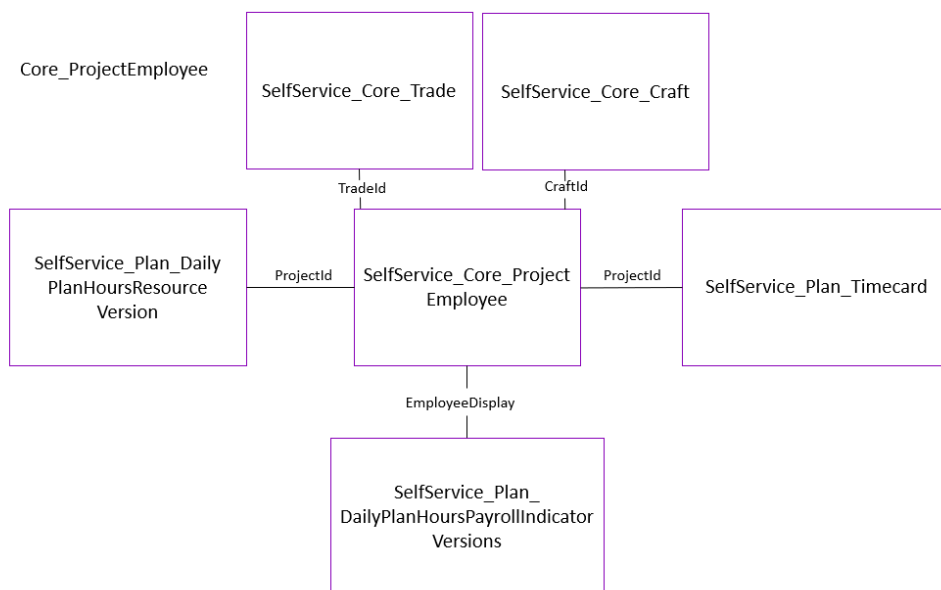
## Overview

The Core Project Employee API captures information about project employees from the Employee tab in the Assigned Operational Resources screen (screen shot below). This data contained in this API includes: employee, rate, factor, craft, trade, and union information.

\*\*Please note: this API contains the same fields as the SelfService\_Core\_ProjectEmployeeVersion API. The only difference is that the Version API contains historical records and when they were active.

## Relationships and Dependencies

From: Table	To: Table	Relationship	Cardinality <sup>1</sup>
SelfService_Core_ProjectEmployee (PE)	SelfService_Plan_DailyPlanHoursResourceVersion (DPH)	PE.EmployeeID= DPH.EmployeeDisplay	1:M
SelfService_Core_ProjectEmployee (PE)	SelfService_Plan_DailyPlanHoursPayrollIndicatorVersions (DPI)	PE.EmployeeID= DPI.EmployeeDisplay	1:M
SelfService_Core_ProjectEmployee (PE)	SelfService_Plan_Timecard (TC)	PE.ProjectId= TC.ProjectId	1:M
SelfService_Core_ProjectEmployee (PE)	SelfService_Core_Trade(T)	PE.TradeId= T.TradeId	1:M
SelfService_Core_ProjectEmployee (PE)	SelfService_Core_Craft(C)	PE.CraftId= C.CraftId	1:M



<sup>1</sup> 1:M = One to Many, 1:1 = One to One, M:1 = Many to one

## API Detail

Direction	From Project Suite	
Pagination	50,000 Rows	
Frequency	All Reporting APIs are used by calling a GET method at an interval determined by the customer. InEight suggests using these APIs on an infrequent basis (once per day) to avoid potential performance impact to live systems when the returned data set could be large.	
Trigger Method(s)	All default OData filters are supported	
Average Payload Size	Depends on date range selected	
APIM Name	SelfService_Core_ProjectEmployee	
Data Refresh/Delta/Incremental Loads	The data in this API is on a trigger-based refresh, fresh data should appear in 5 minutes or less.	
Project Suite	Starting Version	22.8
	Ending Version	N/A

## Supported Filters

All default OData filters are supported by this API.

## Fields

Name	Type	CharMaxLengt h	NumericPrecisio n	DatePrecisio n	Produc t	P K
ProjectEmployeeId	Bigint	Null	19	Null	Core	X
ProjectId	Bigint	Null	19	Null	Core	
EmployeeId	Bigint	Null	19	Null	Core	
EmployeeDisplay	Nvarchar	50	Null	Null	Core	
FullName	Nvarchar	201	Null	Null	Core	
TradeId	Bigint	Null	19	Null	Core	
TradeDescription	Nvarchar	255	Null	Null	Core	
ProjectCraftId	Bigint	Null	19	Null	Core	
CraftId	Bigint	Null	19	Null	Core	
CraftDescription	Nvarchar	255	Null	Null	Core	
VendorId	Bigint	Null	19	Null	Core	
VendorName	Nvarchar	250	Null	Null	Core	
UnionId	Bigint	Null	19	Null	Core	
UnionDescription	Nvarchar	250	Null	Null	Core	
OverrideRates	Varchar	3	Null	Null	Core	
StraightTimeRate	Decimal	Null	16	Null	Core	
CurrencyId	Bigint	Null	19	Null	Core	
CurrencyCode	Nvarchar	50	Null	Null	Core	
UseBaseWageFactors	Varchar	3	Null	Null	Core	
OverTimeFactor	Decimal	Null	16	Null	Core	

<b>DoubleTimeFactor</b>	Decimal	Null	16	Null	Core	
<b>OverTimeRate</b>	Decimal	Null	16	Null	Core	
<b>DoubleTimeRate</b>	Bigint	Null	19	Null	Core	
<b>UOMId</b>	Bigint	Null	19	Null	Core	
<b>UOMName</b>	Nvarchar	255	Null	Null	Core	
<b>ProjectStartDate</b>	Datetimeoffset	Null	Null	7	Core	
<b>ProjectEndDate</b>	Datetimeoffset	Null	Null	7	Core	
<b>Status</b>	bit	Null	Null		Core	
<b>ModifiedDate</b>	Datetimeoffset	Null	Null	7		
<b>IsActive</b>	Bit	Null	Null	Null		
<b>PrimaryCompany</b>	Nvarchar	100	Null	Null	Core	
<b>Supervisor</b>	Nvarchar	201	Null	Null	Core	

## Field Descriptions

Name	Description	Example
<b>ProjectEmployeeId</b>	Unique identifier assigned on the application back-end for project employees	5296
<b>ProjectId</b>	Unique identifier assigned to a project	10469
<b>EmployeeId</b>	Unique identifier for employee assigned by the company	72819
<b>EmployeeDisplay</b>	Unique identifier assigned to employees to be displayed in the application	D_2940
<b>FullName</b>	Employee's first and last name	Katherine Smith
<b>TradeId</b>	Unique identifier of trade associated to employee record	101
<b>TradeDescription</b>	Text description of the trade associated to the employee	Brick Mason
<b>ProjectCraftId</b>	Unique identifier of the craft associated to the employee specific to the project; The Project Craft Id list matches the Craft Id list in master data; to use this it must be made available on the project	17
<b>CraftId</b>	Unique identifier associated to the craft of the employee, maintained in master data	18556
<b>CraftDescription</b>	Description of the craft of the employee	Brick Mason Group 2
<b>VendorId</b>	Unique identifier associated to the vendor of the employee	352

<b>VendorName</b>	Text name of the vendor of the employee	MEC/JV
<b>UnionId</b>	Unique identifier of the union associated to the employee	32
<b>UnionDescription</b>	Text description of the employee's union	Pipefitters local union #464
<b>OverrideRates</b>	indicator if current rates can be overridden, direct reference to master data	Yes
<b>StraightTimeRate</b>	Rate assigned to that employee for straight time hours on this project, can be overridden per the	24.00
<b>CurrencyId</b>	Unique identifier for the currency the employee gets paid in	1
<b>CurrencyCode</b>	Text code associated with employee's currency	USD
<b>UseBaseWageFactors</b>	Indicator to use base wage factors	Yes
<b>OverTimeFactor</b>	Factor to multiply employee wages for overtime work	4.00
<b>DoubleTimeFactor</b>	Factor to multiply employee wages for double time work	16.00
<b>OverTimeRate</b>	Rate to pay an employee for overtime work	64.00
<b>DoubleTimeRate</b>	Rate to pay an employee for double time work	48.00
<b>UOMId</b>	Unique identifier associated to the unit of measure the employee's pay is measured in	10
<b>UOMName</b>	Text description of the unit of measure the employee's pay is measured in	hours
<b>ProjectStartDate</b>	Start date for an employee on a project, this must fall within the Project's start and end dates	2018-07-20 00:00:00.0000000 +00:00
<b>ProjectEndDate</b>	End date for an employee on a project, this must fall within the Project's start and end dates	9999-12-31 00:00:00.0000000 +00:00
<b>Status</b>	Status of employee, as determined by the current date in relation to the employee's project start and end dates	1
<b>ModifiedDate</b>	Timestamp the record was modified on	2019-01-23 02:41:33.6769165 +00:00
<b>IsActive</b>	Indicator if the record is active or inactive	1
<b>PrimaryCompany</b>	Primary Company as assigned to an employee in Master data libraries > Operational Resources	Construct LLC
<b>Supervisor</b>	Supervisor as assigned to an employee in Master data libraries > Operational Resources	David Wetzel

## Sample

```
{
  "ProjectEmployeeId":1,"ProjectId":1,"EmployeeId":9,"EmployeeDisplay":"00354709","FullName":
  "Kayla Kirzinger","TradeId":29,"TradeDescription":"Staff","ProjectCraftId":null,"CraftId":1,"Craft
  Description":"Staff
  Default","VendorId":null,"VendorName":null,"UnionId":null,"UnionDescription":null,"UnionJob
  Title":null,"OverrideRates":"No","StraightTimeRate":null,"CurrencyId":1,"CurrencyCode":"USD
  ","UseBaseWageFactors":"No","OverTimeFactor":null,"DoubleTimeFactor":null,"OverTimeRate":nu
  ll,"DoubleTimeRate":null,"UOMId":10,"UOMName":"Hour","ProjectStartDate":"2016-06-
  20T00:00:00Z","ProjectEndDate":"2017-08-27T00:00:00Z","Status":true,"ModifiedDate":"2022-
  04-28T09:40:27.2623613Z","IsActive":true,"PrimaryCompany":null,"Supervisor":null
}
```

## Data Validation

### Project > Assigned Operational Resources > Employees

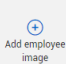
EMPLOYEES												EQUIPMENT	
Employee ID	Name	Master trade > craft	Rate code	Vendor	Union	Override rates	ST rate	Use base wage factors	OT factor	DT factor			
00032258		SP - Specialty Craft > SPLA - Lab...				<input type="checkbox"/>	\$0.00000	<input type="checkbox"/>					
00147342		SP - Specialty Craft > SPFM - For...				<input type="checkbox"/>	\$0.00000	<input type="checkbox"/>					
00192303		ST - Staff > STST - test craft1				<input checked="" type="checkbox"/>	\$0.00000	<input type="checkbox"/>					
00243844		SP - Specialty Craft > SPH2 - Hel...				<input type="checkbox"/>	\$0.00000	<input type="checkbox"/>					
00243845		SP - Specialty Craft > SPH2 - Hel...				<input type="checkbox"/>	\$23.00000	<input type="checkbox"/>					
00251625		ST - Staff > STST - test craft1				<input type="checkbox"/>	\$115.00000	<input type="checkbox"/>		1.44333			
00303386		ST - Staff > STST - test craft1				<input type="checkbox"/>	\$115.00000	<input type="checkbox"/>		1.44333			
00348110		ST - Staff > STST - test craft1				<input type="checkbox"/>	\$115.00000	<input type="checkbox"/>		1.44333			
00353848		ST - Staff > STST - test craft1				<input type="checkbox"/>	\$115.00000	<input type="checkbox"/>		1.44333			

The Employee Id, name, primary company, vendor, union, craft, and job title information can be found in:

### Master data libraries > Operational Resources

Master data libraries > Operational resources > Edit employee

#### Employee details



Add employee image

\* Employee ID  
00\_Emp\_1

\* First name  
00\_Emp\_1

\* Last name  
00E1

Start date  
07/22/2019

End date  
12/31/9999

Primary company

Vendor  
None  
Hint: type vendor name or ID

Union  
Hint: type the union ID or description

Job title

Supervisor  
Hint: type the employee ID or name

\* Craft  
00 - 00

Union job title

Employment country