



Explore API Documentation

SelfService_Core_ProjectEquipmentVersions

Version 1.0

Last Modified: 10/24/2023

Last Modified By: Litzy Mora

Change Log

This changelog only contains significant or notable changes to the revision. Any editorial type changes or minor changes are not included.

Revision	Change Date	Description	Modified By
1.0	6/6/2022	Initial draft	Litzy Mora

Contents

Change Log.....	2
Overview.....	3
Relationships and Dependencies.....	3
API Detail.....	3
Supported Filters.....	4
Fields.....	4
Field Descriptions.....	5
Sample.....	6
Data Validation.....	5

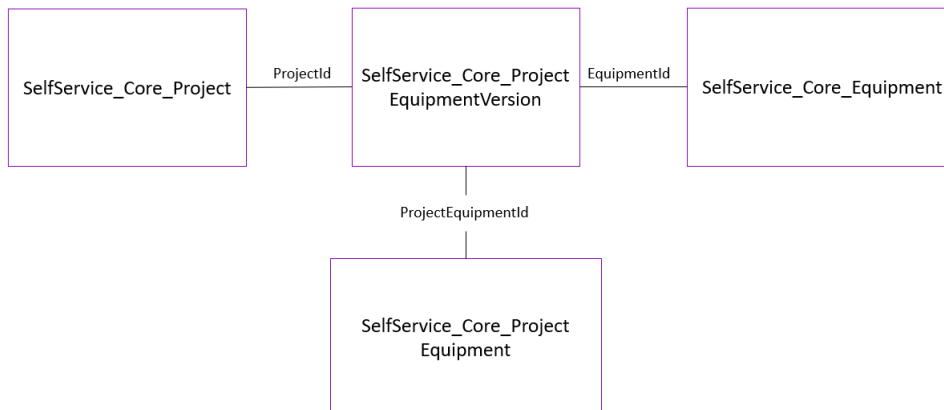
Overview

The Core Project Equipment Version API captures information about project equipment from the Equipment tab in the Assigned Operational Resources screen (screen shot below). The data contained in this API includes information about equipment rate, cost, ownership, type, category, valuation, and regulation. This API contains historical records and the time in which they were active.

Relationships and Dependencies

From: Table	To: Table	Relationship	Cardinality ¹	Comment
SelfService_Core_Project EquipmentVersion(PEV)	SelfService_Core_Project (P)	PEV.ProjectId= P.Project_id	M:1	
SelfService_Core_Project EquipmentVersion(PEV)	SelfService_Core_Project Equipment(PE)	PEV.ProjectEquipmentId= PE.ProjectequipmentId	1:1	
SelfService_Core_Project EquipmentVersion(PEV)	SelfService_Core_Equipment(E)	PEV.EquipmentId= E.EquipmentId	M:1	

Core_ProjectEquipmentVersion



API Detail

Direction	From Project Suite
Pagination	50,000 Rows
Frequency	All Reporting APIs are used by calling a GET method at an interval determined by the customer. InEight suggests using these APIs on an infrequent basis (once per day) to avoid potential performance impact to live systems when the returned data set could be large.
Trigger Method(s)	All default OData filters are supported

¹ 1:M = One to Many, 1:1 = One to One, M:1 = Many to one

Average Payload Size		Depends on date range selected
APIM Name		SelfService_Core_ProjectEquipmentVersion
Data Refresh/Delta/Incremental Loads		The data in this API is on a trigger-based refresh, fresh data should appear in 5 minutes or less.
Project Suite	Starting Version	22.8
	Ending Version	N/A

Supported Filters

All default OData filters are supported by this API.

Fields

Name	Type	CharMaxLength	NumericPrecision	Scale	Product	PK
AccountId	bigint	8	19	0	Core	
ContractLineNumberReference	nvarchar	40	0	0	Core	
ContractReference	nvarchar	100	0	0	Core	
ContractURL	nvarchar	500	0	0	Core	
CreatedById	bigint	8	19	0	Core	
CreatedDate	datetimeoffset	10	34	7	Core	
CurrencyId	bigint	8	19	0	Core	
EffectiveEndDate	datetimeoffset	10	34	7	Core	
EquipmentDescription	nvarchar	510	0	0	Core	
EquipmentDisplay	nvarchar	200	0	0	Core	
EquipmentId	bigint	8	19	0	Core	
EquipmentTypeDescription	nvarchar	510	0	0	Core	
EquipmentTypeDisplay	nvarchar	500	0	0	Core	
IsActive	bit	1	1	0	Core	
IsAvailableDailyPlan	bit	1	1	0	Core	
ModifiedById	bigint	8	19	0	Core	
ModifiedDate	datetimeoffset	10	34	7	Core	
ProjectDisplay	nvarchar	400	0	0	Core	
ProjectEndDate	datetimeoffset	10	34	7	Core	
ProjectEquipmentId	bigint	8	19	0	Core	X
ProjectEquipmentTypeId	bigint	8	19	0	Core	
ProjectId	bigint	8	19	0	Core	
ProjectName	nvarchar	600	0	0	Core	
ProjectStartDate	datetimeoffset	10	34	7	Core	
UnitCost	decimal	9	16	5	Core	
UOMId	bigint	8	19	0	Core	

VendorId	bigint	8	19	0	Core	
VendorName	nvarchar	500	0	0	Core	

Field Descriptions

Name	Description	Example
AccountId	Unique identifier associated with the account	1
ContractLineNumberReference	Reference to the equipment in the contract	NULL
ContractReference	"Optional reference ID for a rental agreement contract	NULL
ContractURL	Optional field that may be used to provide a URL to an external system where the rental agreement contract may be viewed. This information is only displayed in the Assigned operational resources of a project.	NULL
CreatedById	User Id of the individual the created the record	123886
CreatedDate	Date record was created	2022-05-30 11:04:03.6832733+00:00
CurrencyId	Id assigned to the currency associated to the project	1
EffectiveEndDate	The last date the equipment was assigned to the project	NULL
EquipmentDescription	User assigned description of equipment on project	JOHN DEERE-450J LGP
EquipmentDisplay	User assigned display id associated to piece of equipment	101127
EquipmentId	System generated id associated to piece of equipment	8457
EquipmentTypeDescription	Description of the equipment that is shown in the UI	Dozer 60-84 HP LGP
EquipmentTypeDisplay	User assigned ID associated to the equipment type shown in the UI	05-02
IsActive	'1' means active and '0' means inactive	0
IsAvailableDailyPlan	Determines if the equipment is available for selection in a Daily Plan in the Plan and Progress applications	1
ModifiedById	The user id of the individual that modified the record	123886
ModifiedDate	Date record was modified	2022-06-21 18:28:50.3708323+00:00

ProjectDisplay	Unique identifier that is publicly recognizable. This field is displayed in normal use of InEight applications. The value sent in this field can match SourceSystemId if there is no need to use a public versus private unique identifier.	103361
ProjectEndDate	Optionally determines the last date on which the equipment may be used within the assigned project. The date provided in this field cannot be later than the assigned project's end date.	NULL
ProjectEquipmentId	Id assigned to the equipment based on the project	117286
ProjectEquipmentTypeId	ID of the equipment type that is being assigned to the project	NULL
ProjectId	Id of the project that the equipment are assigned to. This field is labeled External Project Id in the InEight UI.	3
ProjectName	Text field that provides a short descriptive name of the project.	The Bentway Project
ProjectStartDate	Optionally determines the first date on which the equipment may be used within the assigned project. The date provided in this field cannot be earlier than the assigned project's start date.	NULL
UnitCost	Sets the hourly rate of the equipment specifically for the project assignment. If this value is not provided, the unit cost is inherited from the equipment type associated to the equipment record	0.00000
UOMId	Id assigned to the unit of measure	10
VendorId	Id assigned to a vendor in the master data library	NULL
VendorName	Name assigned to vendor on vendor details page	NULL

Sample

```
{ "ProjectId":1, "ProjectDisplay":"110111", "ProjectName":"R1 HD Platform Replacement", "ProjectEquipmentId":1, "EquipmentId":3028, "UnitCost":0.00000, "CurrencyId":1, "UOMId":10, "CreatedBy":1, "CreatedDate":"2017-02-
```

```

10T20:25:44.2044452Z", "ModifiedById":1, "ModifiedDate":"2022-06-
17T17:04:19.9904417Z", "IsActive":false, "AccountId":1, "ProjectEquipmentTypeId":null,
"ProjectStartDate":null, "ProjectEndDate":null, "IsAvailableDailyPlan":true, "Contract
Reference":null, "ContractLineNumberReference":null, "ContractURL":null, "EffectiveEnd
Date":null, "EquipmentDisplay":"159116", "EquipmentDescription":"FORD-FUSION
AWD", "EquipmentTypeDisplay":"01-
01", "EquipmentTypeDescription":"Sedan", "VendorId":null, "VendorName":null}, {"Project
Id":1, "ProjectDisplay":"110111", "ProjectName":"R1 HD Platform
Replacement", "ProjectEquipmentId":2, "EquipmentId":5543, "UnitCost":0.00000, "Currency
Id":1, "UOMId":10, "CreatedById":1, "CreatedDate":"2017-02-
10T20:25:44.2825792Z", "ModifiedById":1, "ModifiedDate":"2022-06-
17T17:04:19.9904417Z", "IsActive":false, "AccountId":1, "ProjectEquipmentTypeId":null,
"ProjectStartDate":null, "ProjectEndDate":null, "IsAvailableDailyPlan":true, "Contract
Reference":null, "ContractLineNumberReference":null, "ContractURL":null, "EffectiveEnd
Date":null, "EquipmentDisplay":"163017", "EquipmentDescription":"FORD-F-
150", "EquipmentTypeDisplay":"02-06", "EquipmentTypeDescription":"Pickup 1/2
Ton", "VendorId":null, "VendorName":null
    
```

Data Validation

PROJECT > ASSIGNED OPERATIONAL RESOURCES > EQUIPMENT

EMPLOYEES											EQUIPMENT			
Equipment ID	Description	Ownership	Rate code	Unit cost	UoM	Parent category > model/type	Equipme...	Equipme...	Equipme...	Cost center				
110326	110326	Owned		\$0.00000	Hour	0312 - TRUCKS > 03-94 - Truck Yard Transfer			Yes					
121215	SHOP BUILT-CONEX 20'	Owned		\$0.00000	Hour	24 - MOBILE BUILDINGS > 24-26 - Van Sea/Connex			Yes					
121313	SHOP BUILT-20' CUSTOM CONEX	Owned		\$0.00000	Hour	24 - MOBILE BUILDINGS > 24-26 - Van Sea/Connex			Yes					
122269	XTREME-XR3034	Owned		\$0.00000	Hour	48 - LIFT TRUCKS & TELEHANDLERS > 48-30 - Extendable...			Yes					
123785	FORD-F-150 SUPERCAB	Owned		\$0.00000	Hour	02 - PICKUPS_Info panel > 02-08 - Pickup 1/2 Ton 4X4			Yes					
123791	FORD-EXPLORER	Owned		\$0.00000	Hour	02 - PICKUPS_Info panel > 02-05 - SUV Mid Size			Yes					
123794	FORD-F-250	Owned		\$0.00000	Hour	02 - PICKUPS_Info panel > 02-12 - Pickup 3/4 Ton 4X4			Yes					
137831	TADANO-GR-1000XL-2	Owned		\$0.00000	Hour	15 - CRANES > 15-10 - Crane RT 100-110 Ton			Yes					
150638	150638	Owned		\$0.00000	Hour	15 - CRANES > 15-10 - Crane RT 100-110 Ton			Yes					
159183	159183	Owned		\$0.00000	Hour	02 - PICKUPS_Info panel > 02-08 - Pickup 1/2 Ton 4X4			Yes					
160110	160110	Owned		\$0.00000	Hour	21 - WELDERS > 21-11 - Welder 700-800 Amp D			Yes					