



# Explore API Documentation

## SelfService\_Core\_Union

Version 1.0

Last Modified: 10/24/2023

Last Modified By: Litzy Mora

## Change Log

This changelog only contains significant or notable changes to the revision. Any editorial type changes or minor changes are not included.

Revision	Change Date	Description	Modified By
1.0	8/18/2022	Initial draft	Litzy Mora

## Contents

---

Change Log.....	2
Overview.....	3
Relationships and Dependencies.....	3
API Detail.....	3
Supported Filters.....	4
Fields.....	4
Field Descriptions.....	4
Sample.....	5
Data Validation.....	5

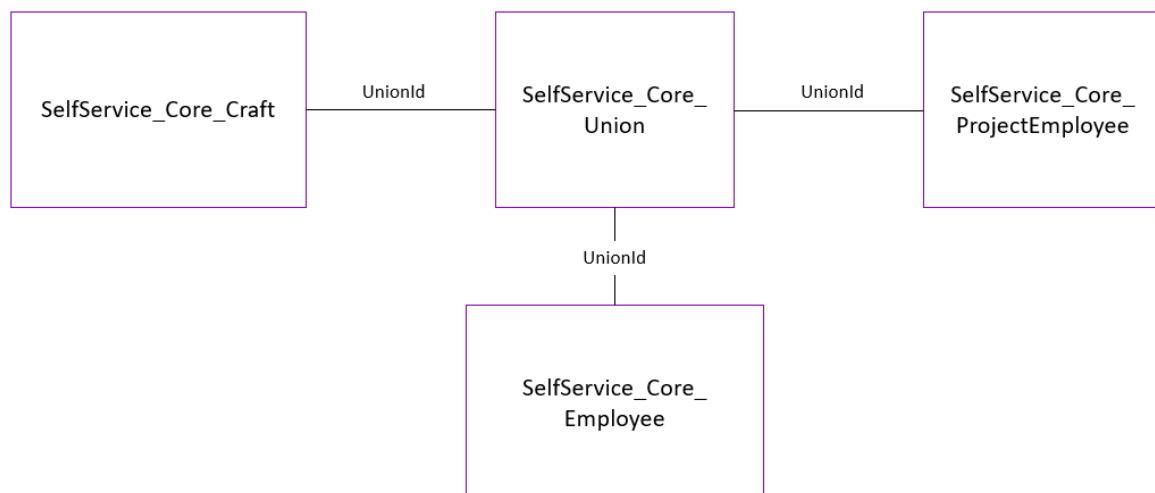
## Overview

This API exposes Master Data information about Unions.

## Relationships and Dependencies

From: Table	To: Table	Relationship	Cardinality <sup>1</sup>	Comment
SelfService_Core_Union(U)	SelfService_Core_Craft(Cr)	U.UnionId=C.UnionId	1:Many	
SelfService_Core_Union(U)	SelfService_Core_ProjectEmployee (PE)	U.UnionId=PE.UnionId	1:Many	
SelfService_Core_Union(U)	SelfService_Core_Employee (E)	U.UnionId=E.UnionId	1:Many	

Core\_Union



## API Detail

Direction	From Project Suite
Pagination	50,000 Rows
Frequency	All Reporting APIs are used by calling a GET method at an interval determined by the customer. InEight suggests using these APIs on an infrequent basis (once per day) to avoid potential performance impact to live systems when the returned data set could be large.
Trigger Method(s)	All default OData filters are supported

<sup>1</sup> 1:M = One to Many, 1:1 = One to One, M:1 = Many to one

Average Payload Size		Depends on date range selected
APIM Name		SelfService_Core_Union
Data Refresh/Delta/Incremental Loads		The data in this API is on a trigger-based refresh, fresh data should appear in 5 minutes or less.
Project Suite	Starting Version	22.8
	Ending Version	N/A

## Supported Filters

All default OData filters are supported by this API.

## Fields

Name	Type	CharMaxLength	NumericPrecision	DatePrecision	Product	PK
CreatedById	bigint	8	19	0	Core	X
CreatedDate	datetimeoffset	10	34	7	Core	
IsActive	bit	1	1	0	Core	
ModifiedById	bigint	8	19	0	Core	
ModifiedDate	datetimeoffset	10	34	7	Core	
SourceSystemId	nvarchar	100	0	0	Core	
SourceSystemName	nvarchar	100	0	0	Core	
UnionDescription	nvarchar	500	0	0	Core	
UnionDisplayId	nvarchar	100	0	0	Core	
UnionId	bigint	8	19	0	Core	

## Field Descriptions

Name	Description	Example
CreatedById	User Id of the individual the created the record	52933
CreatedDate	Date record was created	2022-07-05 20:04:33.6520913+00:00
IsActive	1' means active and '0' means inactive	0
ModifiedById	The user id of the individual that modified the record	52933
ModifiedDate	Date record was modified	2022-07-05 20:11:14.9749248+00:00
SourceSystemId	Identifier created by the system of record and used in all system communications as the primary method of specifying a unique record.	U001
SourceSystemName	Name of the system of record for employees. Collaborate with InEight to identify a specific value to use in this field.	NULL

<b>UnionDescription</b>	Description of Union as entered upon creation or editing.	Union 1 test
<b>UnionDisplayId</b>	User created unique identifier assigned to Union displayed in the application.	U001
<b>UnionId</b>	Unique identifier generated by the system assigned to each Union.	1

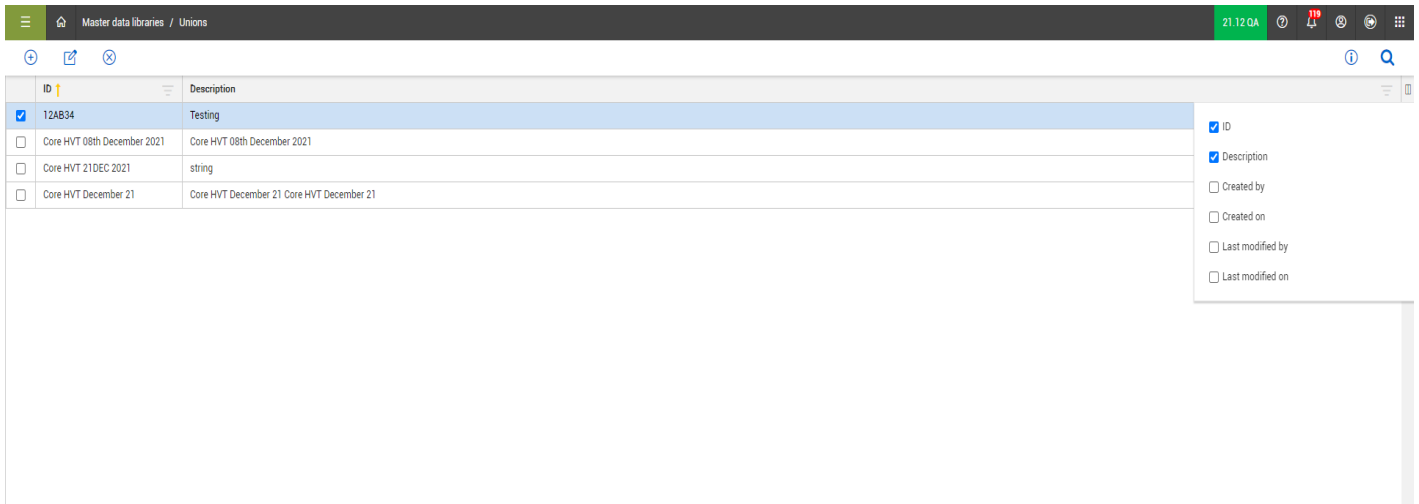
## Sample

```
"UnionId":1,"UnionDisplayId":"U001","UnionDescription":"Union 1 test",
"CreatedById":52933,"CreatedDate":"2022-07-05T20:04:33.6520913Z",
"ModifiedById":52933,"ModifiedDate":"2022-07-05T20:11:14.9749248Z",
"IsActive":false,"SourceSystemId":"U001","SourceSystemName":null
```

## Data Validation

This data can be validated by navigating to Master data libraries and selecting Union

Figure 1: Master data libraries > Unions



ID	Description
<input checked="" type="checkbox"/> 12AB34	Testing
<input type="checkbox"/> Core HVT 08th December 2021	Core HVT 08th December 2021
<input type="checkbox"/> Core HVT 21DEC 2021	string
<input type="checkbox"/> Core HVT December 21	Core HVT December 21 Core HVT December 21