



Explore API Documentation

SelfService_Schedule_ScheduleActivity

Version 1.0

Last Modified: 8/16/2023

Last Modified By: Sanjay Molugu

Change Log

This changelog only contains significant or notable changes to the revision. Any editorial type changes or minor changes are not included.

Revision	Change Date	Description	Modified By
1.0	3/22/2023	Initial Draft	Kimo Pickering

Contents

Change Log.....	2
Overview.....	3
Relationships and Dependencies.....	3
API Detail.....	4
Supported Filters.....	4
Fields.....	5
Field Descriptions.....	6
Sample.....	8
Data Validation.....	9

Overview

The SelfService_Schedule_ScheduleActivity API is one of multiple APIs comprising the data contained in the Schedule Activity entity. The Schedule Activity entity primarily includes six tables:

- SelfService_Schedule_ScheduleActivity
- SelfService_Schedule_ScheduleActivityCodeValueAssignment
- SelfService_Schedule_ScheduleActivityUserDefinedFieldValue
- SelfService_Schedule_ScheduleActivityRegisterEvent
- SelfService_Schedule_ScheduleActivityResource

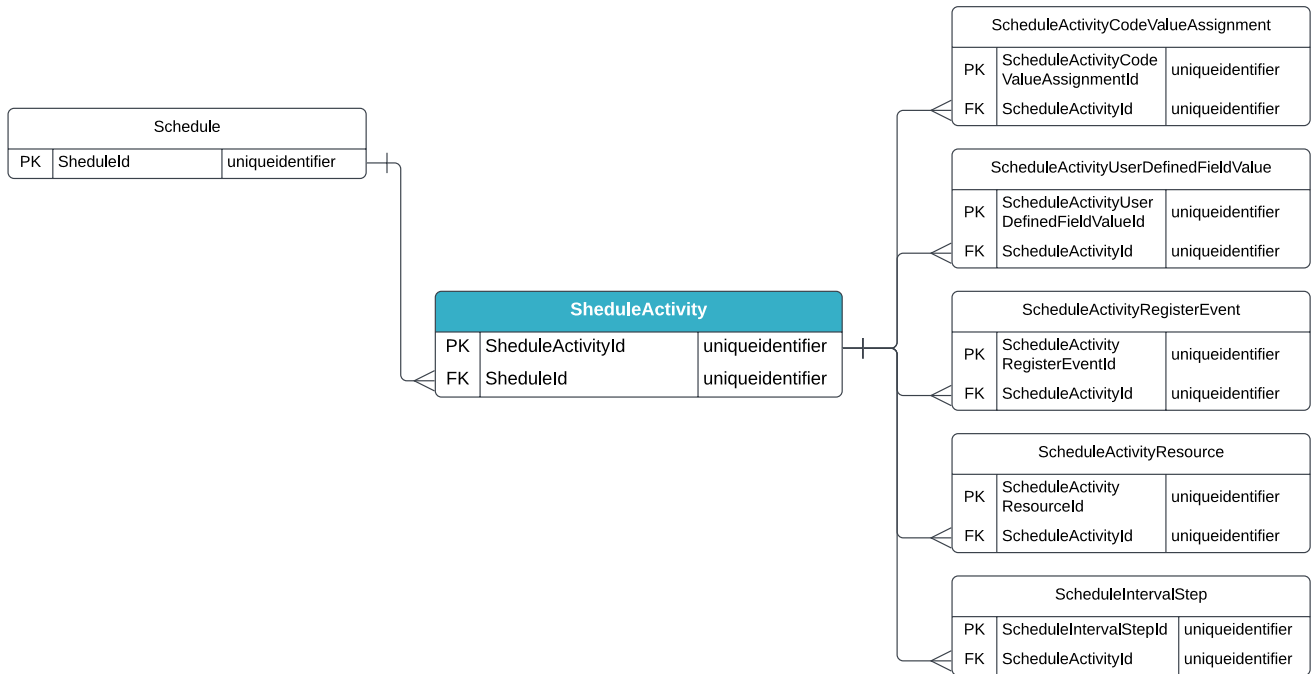
The SelfService_Schedule_ScheduleActivity table contains the list of individual activities in an organization's tenant environment with specific values for foreign key lookup values.

Relationships and Dependencies

From: Table ¹	To: Table ¹	Relationship	Cardinality ²	Comment
ScheduleActivity(SA)	Schedule(S)	SA.ScheduleId : S.ScheduleId	M:1	
ScheduleActivityCodeValueAssignment(SAVCDA)	ScheduleActivity(SA)	SAVCDA.ScheduleActivityId : SA.ScheduleActivityId	M:1	
ScheduleActivityUserDefinedFieldValue(SAUDFV)	ScheduleActivity(SA)	SAUDFV.ScheduleActivityId : SA.ScheduleActivityId	M:1	
ScheduleActivityRegisterEvent(SARE)	ScheduleActivity(SA)	SARE.ScheduleActivityId : SA.ScheduleActivityId	M:1	
ScheduleActivityResource(SAR)	ScheduleActivity(SA)	SAR.ScheduleActivityId : SA.ScheduleActivityId	M:1	
ScheduleIntervalStep(SIS)	ScheduleActivity(SA)	SIS.ScheduleActivityId : SA.ScheduleActivityId	M:1	

¹ Prefix table name with "SelfService_Schedule_" and exclude table abbreviation for queries (e.g., SelfService_Schedule_ScheduleActivityResource); ² 1:M = One to Many, 1:1 = One to One, M:1 = Many to one

Figure 1 - SelfService_Schedule_ScheduleActivity ER Diagram



API Detail

Direction	From Project Suite	
Pagination	50,000 Rows	
Frequency	All Reporting APIs are used by calling a GET method at an interval determined by the customer. InEight suggests using these APIs on an infrequent basis (once per day) to avoid potential performance impact to live systems when the returned data set could be large.	
Trigger Method(s)	All default OData filters are supported	
Average Payload Size	Depends on date range selected	
APIM Name	SelfService_Schedule_ScheduleActivity	
Data Refresh/Delta/Incremental Loads	The data in this API will only refresh once per day	
Project Suite	Starting Version	23.6
	Ending Version	N/A

Supported Filters

All default OData filters are supported by this API.

Fields

Name	Type	Char Max Length	Numeric Precision	Scale	Required?	Product	PK
ScheduleActivityId	uniqueidentifier	16	0	0	Y	Schedule	X
ScheduleId	uniqueidentifier	16	0	0	Y	Schedule	
ScheduleWorkBreakdownStructureId	uniqueidentifier	16	0	0	N	Schedule	
ScheduleActivityName	nvarchar	256	0	0	Y	Schedule	
ScheduleActivityTypeId	bigint	8	19	0	Y	Schedule	
ScheduleActivityDisplayId	nvarchar	40	0	0	Y	Schedule	
ScheduleActivityConstraintTypeId	bigint	8	19	0	N	Schedule	
ScheduleActivityConstraintDateTime	datetime2	8	27	7	N	Schedule	
ScheduleActivityPercentCompleteTypeId	bigint	8	19	0	N	Schedule	
PhysicalPercentComplete	float	8	53	0	N	Schedule	
ScheduleCalendarId	uniqueidentifier	16	0	0	N	Schedule	
StartDateTime	datetime2	8	27	7	Y	Schedule	
EndDateTime	datetime2	8	27	7	Y	Schedule	
EarlyStartDateTime	datetime2	8	27	7	N	Schedule	
EarlyEndDateTime	datetime2	8	27	7	N	Schedule	
LateStartDateTime	datetime2	8	27	7	N	Schedule	
LateEndDateTime	datetime2	8	27	7	N	Schedule	
PlannedStartDateTime	datetime2	8	27	7	N	Schedule	
PlannedEndDateTime	datetime2	8	27	7	N	Schedule	
ActualStartDateTime	datetime2	8	27	7	N	Schedule	
ActualEndDateTime	datetime2	8	27	7	N	Schedule	
Duration	float	8	53	0	Y	Schedule	
RemainingDuration	float	8	53	0	Y	Schedule	
OriginalDuration	float	8	53	0	Y	Schedule	
ActualDuration	float	8	53	0	Y	Schedule	
TotalFloat	float	8	53	0	N	Schedule	
FreeFloat	float	8	53	0	N	Schedule	
RowVersion	Bigint	Null	Null	Null	Y	Schedule	

Field Descriptions

Name	Description	Example
ScheduleActivityId	A unique identifier assigned to the activity.	451fbd8d-bd37-4b77-14b9-08da0dbd1385
ScheduleId	A unique identifier assigned to each schedule record in the table. Formerly known as the Project Id.	JUNNH-1
ScheduleWorkBreakdownStructureId	A unique identifier for the WBS item the activity is associated with.	D1489AB1-E6C6-406E-8CDB-D36F38478B99
ScheduleActivityName	The name of the activity	Backfill Fiber Optic 6" PVC Seg 2 Stage 1
ScheduleActivityTypeId	The type of activity. Valid values include task, s-milestone, f-milestone.	task
ScheduleActivityDisplayId	Custom user provided activity ID. Formerly "TaskId".	MTP7SUB.TPS03
ScheduleActivityConstraintType	The main restriction impacting the activity start or finish date.	snet
ScheduleActivityConstraintDate	The constraint date for the activity, if any.	2022-07-05 16:53:09.417
ScheduleActivityPercentCompleteType	The way the system calculates the percent complete for the activity.	DRTN
PhysicalPercentComplete	User provided percent complete (i.e., override).	1
ScheduleCalendarId	The ID of the calendar assigned to the activity.	15
StartDateTime	The date the activity began.	2022-07-05 16:53:09.417
EndDateTime	The date the activity ended.	2022-07-05 16:53:09.417
EarlyStartDateTime	The earliest possible date the remaining work for the activity can begin. This date is calculated based on network logic, schedule constraints, and resource availability.	2022-07-05 16:53:09.417
EarlyEndDateTime	The earliest possible date the activity can finish. This date is calculated based on network logic, schedule constraints, and resource availability.	2022-07-05 16:53:09.417
LateStartDateTime	The latest possible date the remaining work for the activity can begin without delaying the project finish date. This date is calculated based on activity relationships, schedule constraints, and resource availability.	2022-07-05 16:53:09.417

Name	Description	Example
LateEndTime	The latest possible date the activity can finish without delaying the project finish date. This date is calculated based on activity relationships, schedule constraints, and resource availability.	2022-07-05 16:53:09.417
PlannedStartTime	The date the activity is scheduled to start.	2022-07-05 16:53:09.417
PlannedEndTime	The date the activity is scheduled to finish if the activity has not started.	2022-07-05 16:53:09.417
ActualStartTime	The date the activity actually began. Manual entry.	2022-07-05 16:53:09.417
ActualEndTime	The date the activity was actually completed. Manual entry.	2022-07-05 16:53:09.417
Duration	The total working days to complete the activity.	10
RemainingDuration	The total working days from the activity's Actual Start Date to the Planned End Date.	8
OriginalDuration	The total working days from the activity's Planned Start Date to the Planned End Date.	15
ActualDuration	The total working days from the activity's Actual Start Date to the Actual End Date for completed activities.	18
TotalFloat	The amount of time the activity can be delayed before delaying the project finish date. Calculated as LateStartStateTime minus EarlyStartDateTime or as LateEndTime minus EarlyEndTime.	6
FreeFloat	The amount of time the activity can be delayed before delaying the start date of any successor activity.	40
RowVersion	An indicator if a row has been updated. if this value is greater than the stored value, then update record.	54582065

Sample

```
{"ScheduleActivityId":"451fbd8d-bd37-4b77-14b9-08da0dbd1385",  
"ScheduleId":"JUNNH-1",  
"ScheduleWorkBreakdownStructureId":"D1489AB1-E6C6-406E-8CDB-D36F38478B99",  
"Name":"Backfill Fiber Optic 6" PVC Seg 2 Stage 1",  
"ScheduleActivityTypeId":"task",  
"DisplayId":"MTP7SUB.TPS03",  
"ScheduleActivityConstraintTypeId":"snet",  
"ScheduleActivityConstraintDateTime":"2022-07-05 16:53:09.417",  
"ScheduleActivityPercentCompleteTypeId":"DRTN",  
"PhysicalPercentComplete":"1",  
"ScheduleCalendarId":"15",  
"StartDateTime":"2022-07-05 16:53:09.417",  
"EndDateTime":"2022-07-05 16:53:09.417",  
"EarlyStartDateTime":"2022-07-05 16:53:09.417",  
"EarlyEndDateTime":"2022-07-05 16:53:09.417",  
"LateStartDateTime":"2022-07-05 16:53:09.417",  
"LateEndDateTime":"2022-07-05 16:53:09.417",  
"PlannedStartDateTime":"2022-07-05 16:53:09.417",  
"PlannedEndDateTime":"2022-07-05 16:53:09.417",  
"ActualStartDateTime":"2022-07-05 16:53:09.417",  
"ActualEndDateTime":"2022-07-05 16:53:09.417",  
"Duration":"10",  
"RemainingDuration":"8",  
"OriginalDuration":"15",  
"ActualDuration":"18",  
"TotalFloat":"6",  
"FreeFloat":"40"}
```