



# Explore API Documentation

SelfService\_Schedule\_ScheduleActivityCodeValueAssignment

**Version 1.0**

Last Modified: 3/28/2023

Last Modified By: Kimo Pickering

## Change Log

This changelog only contains significant or notable changes to the revision. Any editorial-type changes or minor changes are not included.

Revision	Change Date	Description	Modified By
1.0	3/28/2023	Initial Draft	Kimo Pickering

## Contents

---

Change Log.....	2
Overview.....	3
Relationships and Dependencies.....	3
API Detail.....	4
Supported Filters.....	4
Fields.....	5
Field Descriptions.....	5
Sample.....	6
Data Validation.....	7

## Overview

The SelfService\_Schedule\_ScheduleActivityCodeValueAssignment API is one of multiple APIs comprising the data contained in the Schedule Activity Code entity.

The SelfService\_Schedule\_ScheduleActivityCodeValueAssignment table contains the list of individual activity code values in an organization's tenant environment with specific values of the foreign key lookup values stored in the ScheduleActivityResourceCodeValue table and can provide a convenient way to reference data as it appears in the application without needing to look up the foreign key values from a lookup table.

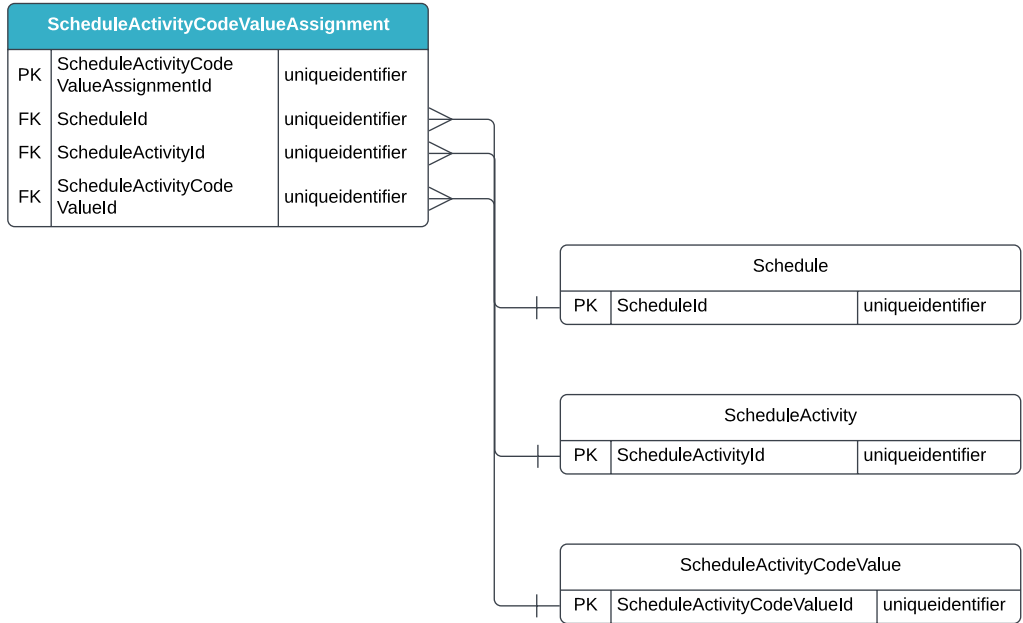
## Relationships and Dependencies

From: Table <sup>1</sup>	To: Table <sup>1</sup>	Relationship	Cardinality <sup>2</sup>	Comment
ScheduleActivityCodeValueAssignment(SAVCDA)	Schedule(S)	SAVCDA.ScheduleId : S.ScheduleId	M:1	
ScheduleActivityCodeValueAssignment(SAVCDA)	ScheduleActivity(SA)	SAVCDA.ScheduleActivityId : SA.ScheduleActivityId	M:1	
ScheduleActivityCodeValueAssignment(SAVCDA)	ScheduleActivityCodeValue(SACDV)	SAVCDA.ScheduleActivityCodeValueId : SACDV.ScheduleActivityCodeValueId	M:1	

<sup>1</sup> Prefix table name with "SelfService\_Schedule\_" and exclude table abbreviation for queries (e.g., SelfService\_Schedule\_ScheduleActivityCodeValueAssignment)

<sup>2</sup> 1:M = One to Many, 1:1 = One to One, M:1 = Many to one

Figure 1. SelfService\_Schedule\_ScheduleActivityCodeValueAssignment ER Diagram



## API Detail

Direction	From Project Suite	
Pagination	50,000 Rows	
Frequency	All Reporting APIs are used by calling a GET method at an interval determined by the customer. InEight suggests using these APIs on an infrequent basis (once per day) to avoid potential performance impact to live systems when the returned data set could be large.	
Trigger Method(s)	All default OData filters are supported	
Average Payload Size	Depends on date range selected	
APIM Name	SelfService_Schedule_ScheduleActivityCodeValueAssignment	
Data Refresh/Delta/Incremental Loads	The data in this API will only refresh once per day	
Project Suite	Starting Version	23.6
	Ending Version	N/A

## Supported Filters

All default OData filters are supported by this API.

## Fields

Name	Type	Char Max Length	Numeric Precision	Scale	Product	PK
ScheduleActivityCodeValueAssignmentId	uniqueidentifier	16	0	0	Y	Schedule P
ScheduleId	uniqueidentifier	16	0	0	Y	Schedule F
ScheduleActivityId	nvarchar(128)	128	0	0	Y	Schedule F
ScheduleActivityCodeValueId	uniqueidentifier	16	0	0	Y	Schedule F
RowVersion	Bigint	Null	Null	Null	Y	Schedule

## Field Descriptions

Name	Description	Example(s)
ScheduleActivityCodeValue AssignmentId	The unique identifier assigned to the Activity Code Value Assignment. Not visible in the interface.	95a462d7-dfd6-4402-9792-4495949a5241
ScheduleId	Unique identifier assigned to each schedule record in the table. Formerly known as the Project Id.	5dac164b-804a-4551-bca5-4d85695c2a8a
ScheduleActivityId	A unique identifier assigned to each schedule activity. Not visible in the interface.	e67ebc1d-659c-48f2-a8e5-11f4332186b1
ScheduleActivityCodeValue Id	The unique identifier assigned to the Activity Code Value. Not visible in the interface.	e2844185-44d5-41c1-9e06-2ded699b62c9
RowVersion	An indicator if a row has been updated. if this value is greater than the stored value, then update record.	54582065

## Sample

### SelfService\_Schedule\_ScheduleActivityCodeValueAssignment

```
{"ScheduleActivityCodeValueAssignmentId":"4e227db9-19ae-4ccf-9fb9-08db71091d6c","ScheduleId":"6c6098e5-90e5-47a0-595d-08db71085192","ScheduleActivityId":"09dfd97d-13f4-4f8c-b513-0cf7202ceba1","ScheduleActivityCodeValueId":"95b0a282-2796-42da-8db1-94c32d915b41"}
```

## Data Validation

This data cannot be validated in the Schedule application because its database table only has a unique identifier as a primary key and no other identifiable fields except for its foreign key values. The unique identifier field, ScheduleActivityCodeValueAssignmentId, is not visible in the interface and can only be viewed in the ScheduleActivityCodeValueAssignment table of the database or in the response of this API call.

