



Explore API Documentation

SelfService_Schedule_ScheduleActivityConstraintType

Version 1.0

Last Modified: 4/26/2023

Last Modified By: Kimo Pickering

Change Log

This changelog only contains significant or notable changes to the revision. Any editorial-type changes or minor changes are not included.

Revision	Change Date	Description	Modified By
1.0	4/26/2023	Initial Draft	Kimo Pickering

Contents

Change Log.....	2
Overview.....	3
Relationships and Dependencies.....	3
API Detail.....	5
Supported Filters.....	5
Fields.....	6
Field Descriptions.....	6
Sample.....	6
Data Validation.....	7

Overview

The SelfService_Schedule_ScheduleActivityConstraintType API is one of multiple APIs comprising the data contained in the Schedule Activity entity. The values contained in the ScheduleActivityConstraintType table are derived from the application's Plan view when an activity has a constraint date applied to it by the user. Valid Constraint Types include:

Activity Type	Constraint Type	Code
Start Milestone	Start On Or After	snet
Start Milestone	Start On Or Before	Snlt
Start Milestone	Must Start On	mso
Start Milestone	Mandatory Start	mands
Start Milestone	As Late As Possible	alap
Finish Milestone	Finish On Or After	fnet
Finish Milestone	Finish On Or Before	fnlt
Finish Milestone	Must Finish On	mfo
Finish Milestone	Mandatory Finish	mandf
Finish Milestone	As Late As Possible	Alap
Task	Any of the above	Any of the above

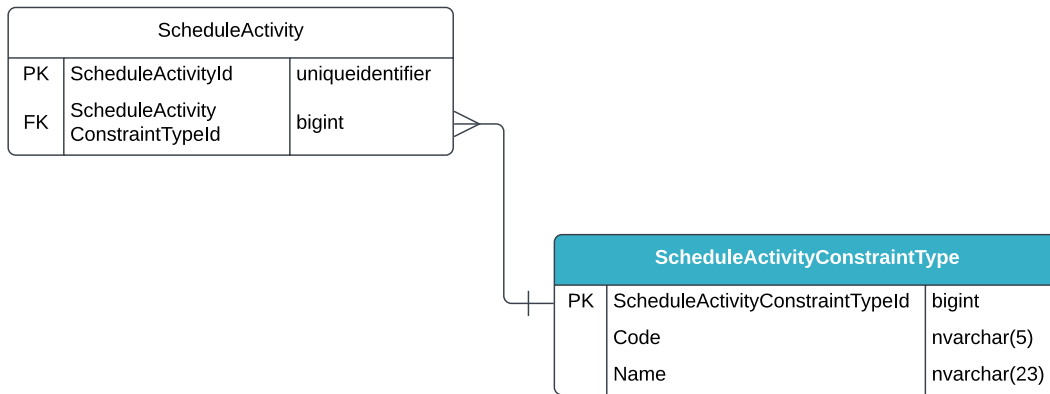
Relationships and Dependencies

From: Table ¹	To: Table ¹	Relationship	Cardinality ²
ScheduleActivity(SA)	ScheduleActivityConstraintType (SACT)	SA.ScheduleActivityConstraintTypeId : SACT.ScheduleActivityConstraintTypeId	M:1

¹ Prefix table name with "SelfService_Schedule_" and exclude table abbreviation for queries (e.g., SelfService_Schedule_ScheduleActivityConstraintType)

² 1:M = One to Many, 1:1 = One to One, M:1 = Many to one

Figure 1. SelfService_Schedule_ScheduleActivityConstraintType ER Diagram



API Detail

Direction	From Project Suite	
Pagination	50,000 Rows	
Frequency	All Reporting APIs are used by calling a GET method at an interval determined by the customer. InEight suggests using these APIs on an infrequent basis (once per day) to avoid potential performance impact to live systems when the returned data set could be large.	
Trigger Method(s)	All default OData filters are supported	
Average Payload Size	Depends on date range selected	
APIM Name	SelfService_Schedule_ScheduleActivityConstraintType	
Data Refresh/Delta/Incremental Loads	This API must be run as a full refresh each time; the data in this API refreshes every 15-20 minutes	
Project Suite	Starting Version	23.6
	Ending Version	N/A

Supported Filters

All default OData filters are supported by this API.

Fields

Name	Type	Char Max Length	Numeric Precision	Scale	Product	Required?	P K
ScheduleActivityConstraintTypeId	bigint	19	19			0	
Code	nvarchar(5)	5	0			0	
Name	nvarchar(23)	23	0			0	
LanguageId	bigint	19	19			0	
RowVersion	Bigint	Null	Null	Null	Y	Schedule	

Field Descriptions

Name	Description	Example(s)
ScheduleActivityConstraintTypeId	A unique identifier of an Activity Constraint type. Not visible in the interface.	54973128
Code	A code associated with a type of constraint assigned by the system. Not visible in the interface.	fnlt
Name	The name of a Constraint Type. It is selected by the user when assigning a Constraint to an activity in the Iris panel of the application.	Finish On Or Before
LanguageId	The ID assigned to the user's language preference.	61483297
RowVersion	An indicator if a row has been updated. if this value is greater than the stored value, then update record.	54582065

Sample

```
{
  "ScheduleActivityConstraintTypeId": "54973128",
  "Code": "fnlt",
  "Name": "Finish On Or Before",
  "LanguageId": "61483297"
}
```

Data Validation

A user can find the Activity Constraint Type Name assigned to an activity by opening a schedule and navigating to the Plan view. Select the View Templates icon in the menu bar and enable the column “Constraint Date.” Select an activity having a date value in the Constraint Date column. The Constraint type will be visible in the Iris panel. Constraint types and dates are assigned to activities in the Iris panel.

Figure 2. Schedule > Plan view

ID - Description	Actions	Id	Start Date	Finish Date	Duration	Float	Constraint Date
US-10 Pre-Bid	...	01-US-10	11 Jan 2016	24 Apr 2020	1096d		
Milestones	...	01-US-10.01	11 Jan 2016	24 Apr 2020	1096d		
Contract Execution	...	A2650	11 Jan 2016	9 Feb 2016	22d	18d	
Notice of Award	...	A2670	13 Jan 2016		0d	24d	
Litigation of Segment C	...	A11920	13 Jan 2016	5 May 2018	846d	229d	
NTP 1	...	A2640	10 Feb 2016		0d	18d	
NTP 2	...	A5400	13 Jul 2016		0d	212d	
Start Milestone Constraint Type 1 - Start On Or After	...	A16620	13 Jul 2016*		0d	965d	13 Jul 2016
Start Milestone Constraint Type 2 - Start On Or Before	...	A16630	14 Jul 2016*		0d	965d	14 Jul 2016
Start Milestone Constraint Type 3 - Must Start On	...	A16640	18 Jul 2016*		0d	963d	18 Jul 2016
Start Milestone Constraint Type 4 - Mandatory Start	...	A16650	19 Jul 2016*		0d	963d	19 Jul 2016
Start Milestone Constraint Type 5 - As Late As Possible	...	A16670	25 Jul 2016*		0d	957d	25 Jul 2016
Construction Start Date	...	A5440	5 Jan 2017		0d	133d	
NTP 3	...	A5410	7 May 2018		0d	164d	
Project Closeout	...	A11930	12 Oct 2019	8 Apr 2020	180d	11d	
Substantial Completion	...	A5420		12 Oct 2019*	0d	10d	22 Oct 2019
Final Completion	...	A5430		8 Apr 2020*	0d	11d	19 Apr 2020
Finish Milestone Constraint Type 1 - As Late As Possible	...	A16660		8 Apr 2020*	0d	11d	8 Apr 2020
Finish Milestone Constraint Type 2 - Finish On Or After	...	A16680		9 Apr 2020*	0d	11d	9 Apr 2020
Finish Milestone Constraint Type 3 - Finish On Or Before	...	A16690		10 Apr 2020*	0d	10d	10 Apr 2020
Finish Milestone Constraint Type 4 - Must Finish On	...	A16700		17 Apr 2020*	0d	4d	17 Apr 2020
Finish Milestone Constraint Type 5 - Mandatory Finish	...	A36710		24 Apr 2020*	0d	0d	24 Apr 2020