



# Explore API Documentation

SelfService\_Schedule\_ScheduleActivityPercentCompleteType  
Version 1.0

Last Modified: 4/27/2023

Last Modified By: Kimo Pickering

## Change Log

This changelog only contains significant or notable changes to the revision. Any editorial-type changes or minor changes are not included.

Revision	Change Date	Description	Modified By
1.0	4/27/2023	Initial Draft	Kimo Pickering

## Contents

---

Change Log.....	2
Overview.....	3
Relationships and Dependencies.....	3
API Detail.....	4
Supported Filters.....	4
Fields.....	5
Field Descriptions.....	5
Sample.....	6
Data Validation.....	7

## Overview

The SelfService\_Schedule\_ScheduleActivityPercentCompleteType API is one of multiple APIs comprising the data contained in the Schedule Activity entity. The values contained in the ScheduleActivityPercentCompleteType table are derived from the application's Plan view when an activity is actualized and assigned a completion percentage based on either duration, physical, or resource units.

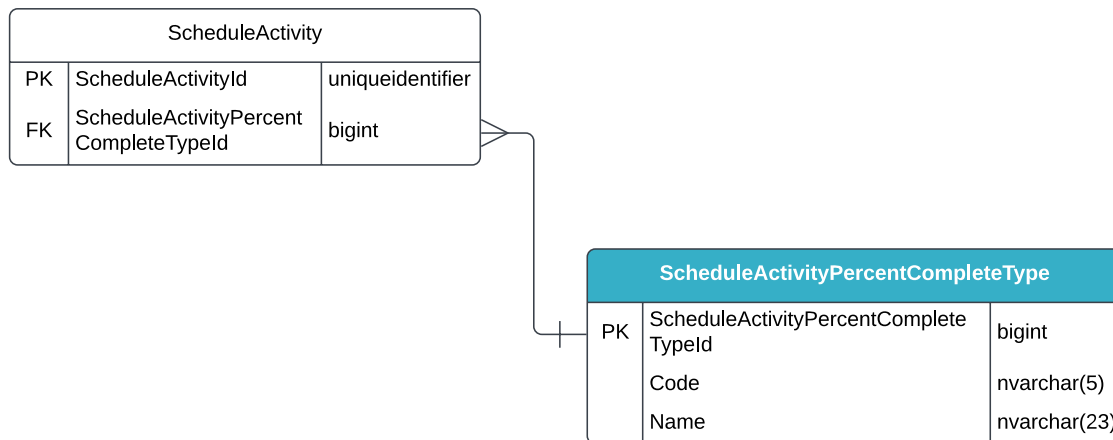
## Relationships and Dependencies

From: Table <sup>1</sup>	To: Table <sup>1</sup>	Relationship	Cardinality <sup>2</sup>
ScheduleActivity (SA)	ScheduleActivityPercent CompleteType(SAPCT)	SA.ScheduleActivityPercentcompleteTypeId : SAPCT.ScheduleActivityPercentcompleteTypeId	M:1

<sup>1</sup> Prefix table name with "SelfService\_Schedule\_" and exclude table abbreviation for queries (e.g., SelfService\_Schedule\_ScheduleActivityPercentCompleteType)

<sup>2</sup> 1:M = One to Many, 1:1 = One to One, M:1 = Many to one

Figure 1. SelfService\_Schedule\_ScheduleActivityPercentCompleteType ER Diagram



## API Detail

Direction	From Project Suite	
Pagination	50,000 Rows	
Frequency	All Reporting APIs are used by calling a GET method at an interval determined by the customer. InEight suggests using these APIs on an infrequent basis (once per day) to avoid potential performance impact to live systems when the returned data set could be large.	
Trigger Method(s)	All default OData filters are supported	
Average Payload Size	Depends on date range selected	
APIM Name	SelfService_Schedule_ScheduleActivityPercentCompleteType	
Data Refresh/Delta/Incremental Loads	This API must be run as a full refresh each time; the data in this API refreshes every 15-20 minutes	
Project Suite	<b>Starting Version</b>	23.6
	<b>Ending Version</b>	N/A

## Supported Filters

All default OData filters are supported by this API.

## Fields

Name	Type	Char Max Length	Numeric Precision	Scale	Required ?	Key
ScheduleActivityPercentCompleteTypeid	bigint	19	19			X
Code	nvarchar(5)	5	0			
Name	nvarchar(23)	23	0			
Languageid	bigint	19	19			
RowVersion	Bigint	Null	Null	Null	Y	Schedule

## Field Descriptions

Name	Description	Example(s)
ScheduleActivityPercentCompleteTypeid	A unique identifier of an Activity Percent Complete Type. Not visible in the interface.	54768899
Code	A code automatically assigned to a Percent Complete type when assigned to an activity. Not visible in the interface.	CP-Drtn
Name	The name of a Percent Complete Type. It is set by the user when they actualize an activity and assign a completion percentage to an activity in the Iris panel of the application. A total of three types of Percent Complete are available in the application; Duration, Physical, and Units. Only Duration and Physical are available to the user for selection.	Duration
Languageid	The ID assigned to the user's language preference.	99811250
RowVersion	An indicator if a row has been updated. if this value is greater than the stored value, then update record.	54582065

## Sample

```
{"ScheduleActivityPercentCompleteTypeId": "1",  
"Code": "duration",  
"ScheduleActivityPercentCompleteTypeName": "Duration",  
"LanguageId": "1"}
```

## Data Validation

A user can find an activity's Percent Complete Type by opening a schedule and navigating to the Plan view. Select the View Templates icon in the menu bar and enable the columns “% Complete” and “% Complete Type”. Select an activity to either view or assign the Percent Complete type and percentage to the activity from the Iris panel. Three other related columns can be enabled as well: “Duration % Complete”, “Physical % Complete”, and “Unit % Complete”.

Figure 2. Schedule > Plan view

ID	Description	Start Date	Finish Date	Duration	Float	% Complete	% Complete Type	Duration % Complete	Physical % Complete	Unit % Complete
PRRW/TCT219	Train Control: APO Factory Testing - Altom	6 May 2014	5 Jul 2014	60	21	0%	Duration	0%	0%	0%
PRRW/TCT305	Train Control: APO Trainworn and Shipping - Altom	5 Jul 2014	15 Jul 2014	10	21	0%	Duration	0%	0%	0%
BBT-20131110.5	Traction Power	1 Mar 2012 A	31 May 2014	822		76%	Duration	76%	100%	0%
PRRW/PTP02	Traction Power: Product & Typical Schematics Design	1 Mar 2012 A	16 Nov 2012 A	260		100%	Duration	100%	100%	100%
PRRW/PTP01	Traction Power: Substation Controls & ETIS Design & Product	6 Nov 2012 A	9 Jul 2013 A	245		100%	Duration	100%	100%	100%
PRRW/PTP03	Traction Power: SPP Substation AC/DC Switchgear Manufacturing - Myers	17 Dec 2012 A	19 Jan 2014	399	84	55%	Duration	55%	0%	0%
PRRW/PTP04	Traction Power: SIA Substation DC Switchgear Manufacturing - Myers	17 Dec 2012 A	19 Jan 2014	399	124	50%	Duration	50%	0%	0%
PRRW/PTP05	Traction Power: SBR Substation AC/DC Switchgear Manufacturing - Myers	17 Dec 2012 A	19 Jan 2014	399	34	55%	Duration	55%	0%	0%
PRRW/PTP06	Traction Power: SSM Substation AC/DC Switchgear Manufacturing - Myers	17 Dec 2012 A	19 Jan 2014	399	64	50%	Duration	50%	0%	0%
PRRW/PTP07	Traction Power: SNS Substation AC/DC Switchgear Manufacturing - Myers	17 Dec 2012 A	19 Jan 2014	399	84	55%	Duration	55%	0%	0%
PRRW/PTP113	Traction Power: SIA Substation Site Specific Design	28 Jan 2013 A	26 Jun 2014	364	117	60%	Duration	60%	0%	0%
PRRW/PTP112	Traction Power: SSM Substation Site Specific Design	28 Jan 2013 A	25 Nov 2013	302	117	99%	Duration	99%	0%	0%
PRRW/PTP115	Traction Power: SNS Substation Site Specific Design	1 May 2013 A	29 Jan 2014	271	57	60%	Duration	60%	0%	0%
PRRW/PTP114	Traction Power: SBR Substation Site Specific Design	1 May 2013 A	2 Aug 2013 A	93		100%	Duration	100%	100%	100%
PRRW/PTP116	Traction Power: SPP Substation Site Specific Design	1 May 2013 A	25 Feb 2014	223	57	90%	Duration	90%	0%	0%
PRRW/PTP350	Traction Power: SBR Substation PDC Manufacturing - Myers	15 Jul 2013 A	18 Feb 2014	195	34	55%	Duration	55%	0%	0%
PRRW/PTP350	Traction Power: SSM Substation PDC Manufacturing - Myers	14 Oct 2013 A	22 Mar 2014	160	32	15%	Duration	15%	0%	0%
PRRW/PTP400	Traction Power: SPP Substation PDC Manufacturing - Myers	3 Dec 2013	21 Apr 2014	140	32	0%	Duration	0%	0%	0%
PRRW/PTP150	Traction Power: SIA Substation PDC Manufacturing - Myers	2 Jan 2014	21 May 2014	140	32	0%	Duration	0%	0%	0%
PRRW/PTP350	Traction Power: SNS Substation PDC Manufacturing - Myers	2 Jan 2014	21 May 2014	140	45	0%	Duration	0%	0%	0%
PRRW/PTP360	Traction Power: SBR Substation Factory Testing - Myers	18 Feb 2014	28 Feb 2014	10	60	0%	Duration	0%	0%	0%
PRRW/PTP360	Traction Power: SSM Substation Factory Testing - Myers	23 Mar 2014	1 Apr 2014	10	49	0%	Duration	0%	0%	0%
PRRW/PTP360	Traction Power: SPP Substation Factory Testing - Myers	22 Apr 2014	1 May 2014	10	41	0%	Duration	0%	0%	0%
PRRW/PTP700	Traction Power: SNS Substation Factory Testing - Myers	22 May 2014	31 May 2014	10	40	0%	Duration	0%	0%	0%
PRRW/PTP550	Traction Power: SIA Substation Factory Testing - Myers	27 May 2014	31 May 2014	10	33	0%	Duration	0%	0%	0%
BBT-20131111.U.S.	Track Work	9 Oct 2011 A	28 Oct 2012 A	754		100%	Duration	100%	100%	100%
BBT-20131111.U.S.	Track	9 Oct 2011 A	28 Oct 2012 A	754		100%	Duration	100%	100%	100%
PRRW/TW702	District Furnished Material: 119RE Track	9 Oct 2011 A*	9 Oct 2011 A*	0		100%	Duration	100%	100%	100%
PRRW/TW702	District Furnished Material: 119RE Special Track	9 Oct 2011 A*	9 Oct 2011 A*	0		100%	Duration	100%	100%	100%
PRRW/TW620	Track Equipment: Manufacturing and Delivery	12 Nov 2012 A	28 Oct 2012 A	150		100%	Duration	100%	100%	100%
BBT-20131111.U.S.	Communications	25 Jan 2013 A	5 May 2014	333		64%	Duration	64%	100%	0%
PRRW/CEQ011	Comm: Site Book Design - S/M/Key	25 Jan 2013 A	17 Dec 2013	327	110	60%	Duration	60%	100%	0%
PRRW/CEQ0212	Comm: Site Book Design - LMA	25 Jan 2013 A	26 Nov 2013	306	131	55%	Duration	55%	100%	0%
PRRW/CEQ0122	Comm: Site Book Design - CPS	25 Jan 2013 A	11 Dec 2013	321	116	70%	Duration	70%	100%	0%
PRRW/CEQ0172	Comm: Site Book Design - Passenger Station	25 Jan 2013 A	17 Dec 2013	327	110	60%	Duration	60%	100%	0%
PRRW/CEQ0142	Comm: Site Book Design - SPP / S06	25 Jan 2013 A	17 Dec 2013	327	110	60%	Duration	60%	100%	0%
PRRW/CEQ0142	Comm: Site Book Design - Radio Site	25 Jan 2013 A	17 Dec 2013	327	110	60%	Duration	60%	100%	0%
PRRW/CEQ0152	Comm: Site Book Design - SBR / S12	25 Jan 2013 A	17 Dec 2013	327	110	60%	Duration	60%	100%	0%
PRRW/CEQ0132	Comm: Site Book Design - LES	25 Jan 2013 A	17 Dec 2013	327	110	60%	Duration	60%	100%	0%
PRRW/CEQ0142	Comm: Site Book Design - Ancillary /S20	25 Jan 2013 A	17 Dec 2013	327	110	60%	Duration	60%	100%	0%
PRRW/CEQ0132	Comm: Site Book Design - SWS	25 Jan 2013 A	17 Dec 2013	327	110	60%	Duration	60%	100%	0%