



Explore API Documentation

SelfService_Schedule_ScheduleActivityResource

Version 1.0

Last Modified: 3/24/2023

Last Modified By: Kimo Pickering

Change Log

This changelog only contains significant or notable changes to the revision. Any editorial-type changes or minor changes are not included.

| Revision | Change Date | Description | Modified By |
|----------|-------------|---------------|----------------|
| 1.0 | 3/24/2023 | Initial Draft | Kimo Pickering |

Contents

| | |
|--------------------------------------|---|
| Change Log..... | 2 |
| Overview | 3 |
| Relationships and Dependencies | 3 |
| API Detail..... | 4 |
| Supported Filters..... | 4 |
| Fields | 4 |
| Field Descriptions..... | 5 |
| Sample | 5 |
| Data Validation | 6 |

Overview

The SelfService_Schedule_ScheduleActivityResource API is one of multiple APIs comprising the data contained in the Schedule Work Breakdown Structure (WBS) entity.

The SelfService_Schedule_ScheduleActivityResource table contains the list of individual activity resources in an organization’s tenant environment with specific values of the foreign key lookup values stored in the ScheduleActivityResource table and can provide a convenient way to reference data as it appears in the application without needing to look up the foreign key values from a lookup table.

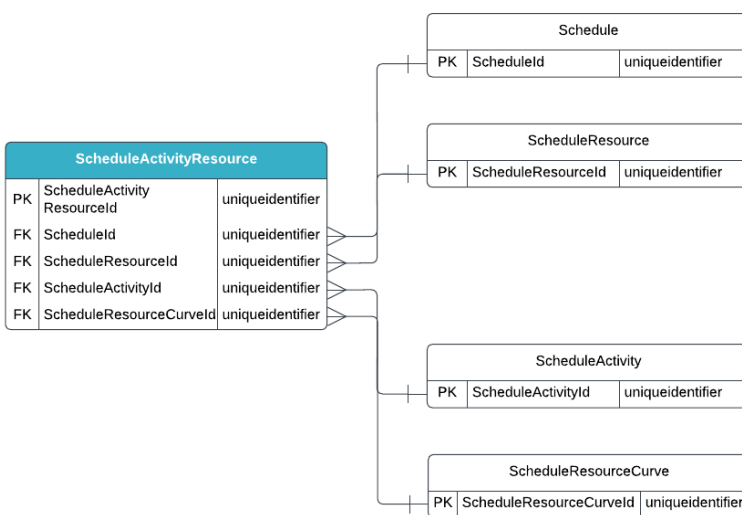
Relationships and Dependencies

| From: Table ¹ | To: Table ¹ | Relationship | Cardinality ² | Comment |
|-------------------------------|-----------------------------|--|--------------------------|---------|
| ScheduleActivityResource(SAR) | Schedule(S) | SAR.ScheduleId : S.ScheduleId | M:1 | |
| ScheduleActivityResource(SAR) | ScheduleResource(SR) | SAR.ScheduleResourceId : SR.ScheduleResourceId | M:1 | |
| ScheduleActivityResource(SAR) | ScheduleActivity(SA) | SAR.ScheduleActivityId : SA.ScheduleActivityId | M:1 | |
| ScheduleActivityResource(SAR) | ScheduleResourceCurve(SRCU) | SAR.ScheduleResourceCurveId : SRCU.ScheduleResourceCurveId | M:1 | |

¹ Prefix table name with “SelfService_Schedule_” and exclude table abbreviation for queries (e.g., SelfService_Schedule_ScheduleActivityResource)

² 1:M = One to Many, 1:1 = One to One, M:1 = Many to one

Figure 1. SelfService_Schedule_ScheduleActivity ER Diagram



API Detail

| | | |
|--------------------------------------|---|------|
| Direction | From Project Suite | |
| Pagination | 50,000 Rows | |
| Frequency | All Reporting APIs are used by calling a GET method at an interval determined by the customer. InEight suggests using these APIs on an infrequent basis (once per day) to avoid potential performance impact to live systems when the returned data set could be large. | |
| Trigger Method(s) | All default OData filters are supported | |
| Average Payload Size | Depends on date range selected | |
| APIM Name | SelfService_Schedule_ScheduleActivityResource | |
| Data Refresh/Delta/Incremental Loads | The data in this API will only refresh once per day | |
| Project Suite | Starting Version | 23.6 |
| | Ending Version | N/A |

Supported Filters

All default OData filters are supported by this API.

Fields

| Name | Type | Char Max Length | Numeric Precision | Scale | Required? | Product | PK |
|----------------------------|------------------|-----------------|-------------------|-------|-----------|---------|----|
| ScheduleActivityResourceId | uniqueidentifier | 16 | | | Y | | P |
| ScheduleId | uniqueidentifier | 16 | | | Y | | F |
| ScheduleResourceId | uniqueidentifier | 16 | | | Y | | F |
| ScheduleActivityId | uniqueidentifier | 16 | | | Y | | F |
| ScheduleResourceCurvedId | uniqueidentifier | 16 | | | Y | | F |
| Planned | decimal(16,5) | 17 | 16 | 5 | Y | | |
| Remaining | decimal(16,5) | 17 | 16 | 5 | Y | | |
| Actual | decimal(16,5) | 17 | 16 | 5 | Y | | |
| CostPerUnit | decimal(16,5) | 17 | 16 | 5 | Y | | |

Field Descriptions

| Name | Description | Example(s) |
|----------------------------|---|--------------------------------------|
| ScheduleActivityResourceId | A unique identifier of an activity's resource. | ccb08864-9619-4e56-99f2-da770c1c86a2 |
| ScheduleId | A unique identifier assigned to each schedule record in the table. Formerly known as the Project Id. | c85f1b70-ff74-4601-865a-def8fec9ea64 |
| ScheduleResourceId | A unique identifier of a resource. | c44b999f-a3f9-4f1c-8c54-9aa366de0b03 |
| ScheduleActivityId | A unique identifier of an activity. | f8382a31-664a-4d37-b506-3be966afa5d6 |
| ScheduleResourceCurveId | A unique identifier of a resource curve. | fc9214c3-683f-418a-bdcf-933896544d08 |
| Planned | The planned quantity of units for the selected resource. Unit type will vary according to the resource type. | 160 |
| Remaining | The remaining quantity of units for the selected resource. Unit type will vary according to the resource type. | 54 |
| Actual | The actual quantity of units spent to-date for the selected resource. Unit type will vary according to the resource type. | 106 |
| CostPerUnit | The unit cost for a resource. | 55 |

Sample

```
{
  "ScheduleActivityResourceId": "ccb08864-9619-4e56-99f2-da770c1c86a2",
  "ScheduleId": "c85f1b70-ff74-4601-865a-def8fec9ea64",
  "ScheduleResourceId": "c44b999f-a3f9-4f1c-8c54-9aa366de0b03",
  "ScheduleActivityId": "f8382a31-664a-4d37-b506-3be966afa5d6",
  "ScheduleResourceCurveId": "fc9214c3-683f-418a-bdcf-933896544d08",
  "Planned": "160",
  "Remaining": "54",
  "Actual": "106",
  "CostPerUnit": "55"}

```

Data Validation

This data can be validated by navigating to the InEight Schedule application, opening a project schedule, and selecting the desired activity resource icon.

Figure 2. Schedule > Activity > Activity Resources icon

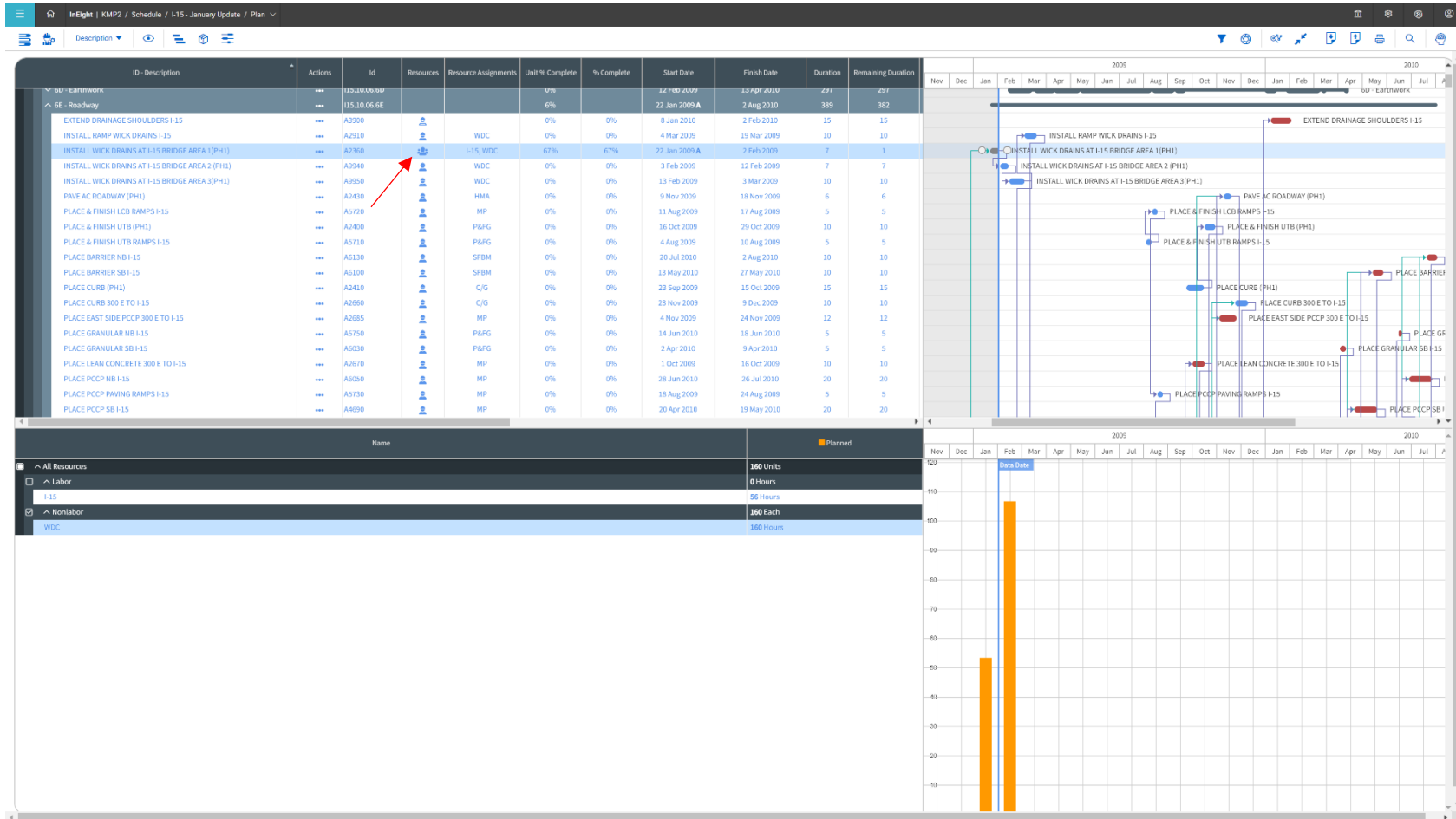


Figure 3. Activity Resource Status Window

A2360: INSTALL WICK DRAINS AT I-15 BRIDGE AREA 1(PH1)
(22 Jan 2009 - 2 Feb 2009) -- rd

| ID ↑ | Name | Category | Color | Curve | Units/d | Unit | Cost/unit | FTE/Qty | Plan | Rem | Act |
|------|------------------|----------|-------|--------|---------|-------|-----------|---------|------|-------|--------|
| I-15 | I-15 | Labor | Blue | Linear | 8 | Hours | 0 | 1 | 56 | 18.67 | 37.33 |
| WDC | Wick Drain Crane | Nonlabor | Blue | Linear | 22.86 | Hours | 0 | - | 160 | 53.33 | 106.67 |