



Explore API Documentation

SelfService_Schedule_ScheduleActivityType

Version 1.0

Last Modified: 4/28/2023

Last Modified By: Kimo Pickering

Change Log

This changelog only contains significant or notable changes to the revision. Any editorial-type changes or minor changes are not included.

Revision	Change Date	Description	Modified By
1.0	4/28/2023	Initial Draft	Kimo Pickering

Contents

Change Log.....	2
Overview.....	3
Relationships and Dependencies.....	3
API Detail.....	5
Supported Filters.....	5
Fields.....	6
Field Descriptions.....	6
Sample.....	7
Data Validation.....	8

Overview

The SelfService_Schedule_ScheduleActivityType API is one of multiple APIs comprising the data contained in the Schedule Activity entity. The values contained in the ScheduleActivityType table are derived from the application's Plan view when an activity is created and assigned an Activity Type of one of the following:

Activity Type Name	Activity Type Code
Task	task
Level of Effort	loe
Start Milestone	s_milestone
Finish Milestone	f_milestone
WBS Summary	wbssummary

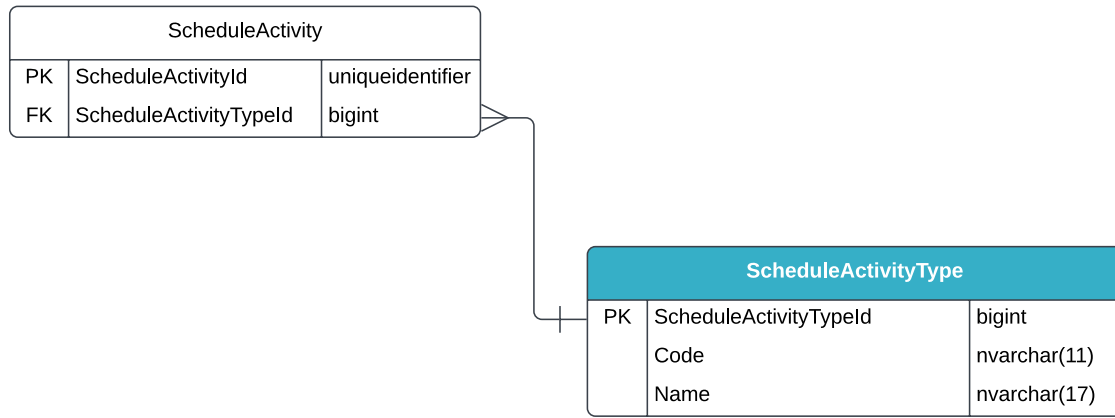
Relationships and Dependencies

From: Table ¹	To: Table ¹	Relationship	Cardinality ²
ScheduleActivity(SA)	ScheduleActivityType(SAT)	SA.ScheduleActivityTypeId : SAT.ScheduleActivityTypeId	M:1

¹ Prefix table name with "SelfService_Schedule_" and exclude table abbreviation for queries (e.g., SelfService_Schedule_ScheduleActivityType)

² 1:M = One to Many, 1:1 = One to One, M:1 = Many to one

Figure 1. SelfService_Schedule_ScheduleActivityType ER Diagram



API Detail

Direction	From Project Suite	
Pagination	50,000 Rows	
Frequency	All Reporting APIs are used by calling a GET method at an interval determined by the customer. InEight suggests using these APIs on an infrequent basis (once per day) to avoid potential performance impact to live systems when the returned data set could be large.	
Trigger Method(s)	All default OData filters are supported	
Average Payload Size	Depends on date range selected	
APIM Name	SelfService_Schedule_ScheduleActivityType	
Data Refresh/Delta/Incremental Loads	This API must be run as a full refresh each time; the data in this API refreshes every 15-20 minutes	
Project Suite	Starting Version	23.6
	Ending Version	N/A

Supported Filters

All default OData filters are supported by this API.

Fields

Name	Type	Char Max Length	Numeric Precision	Scale	Required?	Key?
ScheduleActivityTypeId	bigint	8	19		Y	P
Code	nvarchar(11)	11	0		Y	
ScheduleActivityTypeName	nvarchar(17)	17	0		Y	
LanguageId	bigint	8	19		Y	

Field Descriptions

Name	Description	Example(s)
ScheduleActivityTypeId	A unique identifier assigned to the selected Activity Type. Not visible in the interface.	82699713
Code	The Activity Type code assigned to the activity; task, loe, wbssummary, s_milestone, f_milestone.	wbssummary
Name	The name of the Activity Type.	WBS Summary
LanguageId	The ID assigned to the user's language preference.	61483297

Sample

```
{"ScheduleActivityTypeId":"82699713",  
"Code":"wbssummary",  
"Name":"WBS Summary",  
"LanguageId":"61483297"}
```

Data Validation

An Activity Type is assigned when the activity is created in the Plan view of the application. To create an activity and assign the activity type, click on the ellipse's icon in the "Actions" column and select the type of activity to create from the dropdown menu. See image below.

Figure 2. Schedule > Plan view > Actions

ID - Description	Actions	Id	Start Date	Finish Date	Duration	Remaining Duration	Float	Resources
US-10 Pre-bid		01-US-10	11 Jan 2016	24 Apr 2020	1096d	1096d		
WBS Level 1		01-US-10.1	11 Jan 2016	12 Feb 2016	24d	24d		
WBS Summary Activity			11 Jan 2016	12 Feb 2016	24d	24d	1072d	
Planning Package			11 Jan 2016	12 Feb 2016	24d	24d		
Start Milestone A16730			11 Jan 2016	11 Jan 2016	0d	0d	1096d	
Level of Effort			11 Jan 2016	5 Feb 2016	20d	20d	1076d	
Activity A16720			11 Jan 2016	5 Feb 2016	20d	20d	1076d	
Finish Milestone A16740			11 Jan 2016	12 Feb 2016*	0d	0d	1072d	
Milestones			11 Jan 2016	24 Apr 2020	1096d	1096d		
Engineering			10 Feb 2016	31 Oct 2019	949d	949d		
Procurement			11 Jan 2016	12 Dec 2018	742d	742d		
Construction			10 Feb 2016	11 Oct 2019	935d	935d		
Construction Level 2 WBS			24 Aug 2017	11 Sep 2019	522d	522d		
Mobilization			10 Feb 2016	22 Mar 2016	30d	30d		
Utility Relocations			4 Aug 2016	15 Jun 2018	472d	472d		
Site Preparation			10 Feb 2016	9 Jul 2019	867d	867d		
Drilled Shafts/Driven Piles			12 Apr 2017	27 Mar 2019	500d	500d		
Grading and Drainage			5 Jan 2017	27 Aug 2019	674d	674d		
Bridges			4 Apr 2017	23 Jul 2019	586d	586d		
Soundwalls			11 Sep 2017	9 May 2019	423d	423d		
Paving			17 Oct 2017	1 Aug 2019	457d	457d		
AC Paving and Striping			15 Mar 2019	11 Oct 2019	151d	151d		
FMS/ Lighting			26 Sep 2017	2 May 2019	407d	407d		
Landscaping			24 Apr 2017	13 Jun 2019	544d	544d		
Project Closeout			23 Jan 2019	6 Aug 2019	139d	139d		