



Explore API Documentation

SelfService_Schedule_ScheduleActivityUserDefinedField

Version 1.0

Last Modified: 4/10/2023

Last Modified By: Kimo Pickering

Change Log

This changelog only contains significant or notable changes to the revision. Any editorial-type changes or minor changes are not included.

Revision	Change Date	Description	Modified By
1.0	4/10/2023	Initial Draft	Kimo Pickering

Contents

Change Log.....	2
Overview.....	3
Relationships and Dependencies.....	3
API Detail.....	4
Supported Filters.....	4
Fields.....	5
Field Descriptions.....	5
Sample.....	6
Data Validation.....	7

Overview

The SelfService_Schedule_ScheduleActivityUserDefinedField API is one of multiple APIs comprising the data contained in the Schedule Activity entity.

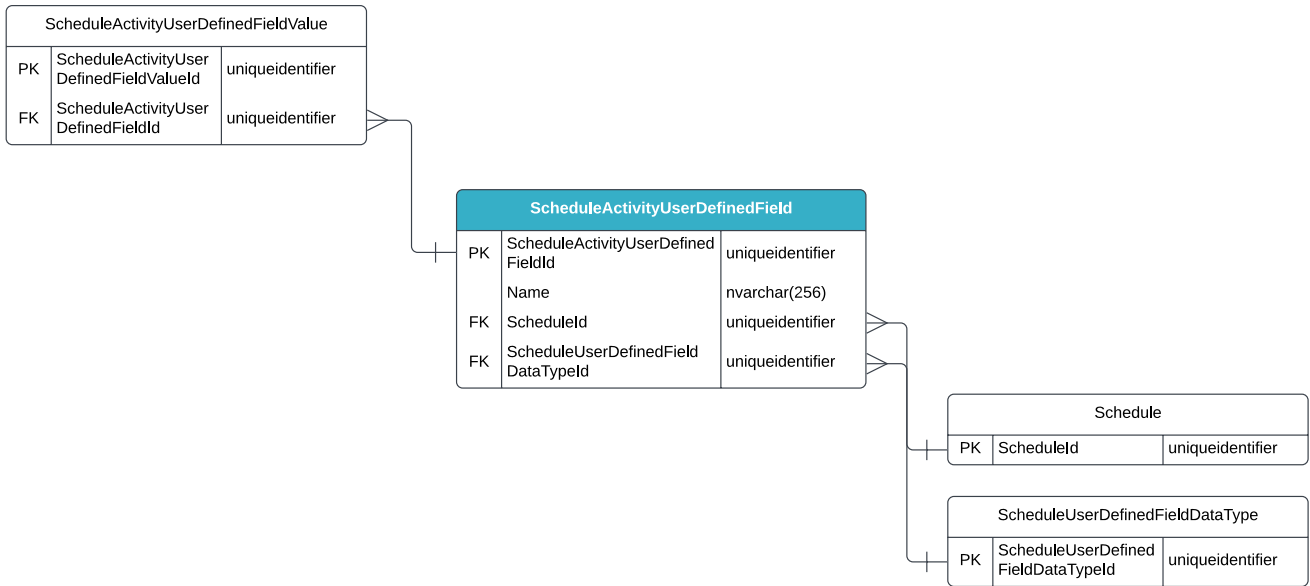
The SelfService_Schedule_ScheduleActivityUserDefinedField contains the custom Activity User Defined Fields (UDF) (aka, tags) that have been created in the Knowledge Tags section of the Schedule Configuration area. These UDFs have been assigned or are ready to be assigned to individual schedule activities. The Activity User Defined Field data type is selected by the user when the Activity UDF is created. Unlike the Knowledge Tags' Activity Code value(s), which have pre-defined values for the user to assign to an activity, the Activity UDF value is entered manually by the user each time it is assigned to a schedule activity in the Plan view.

Relationships and Dependencies

From: Table ¹	To: Table ¹	Relationship	Cardinality ²	Comment
ScheduleActivityUserDefinedFieldValue(SAUDFV)	ScheduleActivityUserDefinedField(SAUDF)	SAUDFV.ScheduleActivityUserDefinedFieldId : SAUDF.ScheduleActivityUserDefinedFieldId	M:1	
ScheduleActivityUserDefinedField(SAUDF)	Schedule(S)	SAUDF.ScheduleId : S.ScheduleId	M:1	
ScheduleActivityUserDefinedField(SAUDF)	ScheduleUserDefinedFieldDataType(SUDFDT)	SAUDF.ScheduleUserDefinedFieldDataTypeId : SUDFDT.ScheduleUserDefinedFieldDataTypeId	M:1	

¹ Prefix table name with "SelfService_Schedule_" and exclude table abbreviation for queries (e.g., SelfService_Schedule_ScheduleActivityUserDefinedField)

² 1:M = One to Many, 1:1 = One to One, M:1 = Many to one

Figure 1. SelfService_Schedule_ScheduleActivityUserDefinedField ER Diagram


API Detail

Direction	From Project Suite	
Pagination	50,000 Rows	
Frequency	All Reporting APIs are used by calling a GET method at an interval determined by the customer. InEight suggests using these APIs on an infrequent basis (once per day) to avoid potential performance impact to live systems when the returned data set could be large.	
Trigger Method(s)	All default OData filters are supported	
Average Payload Size	Depends on date range selected	
APIM Name	SelfService_Schedule_ScheduleActivityUserDefinedField	
Data Refresh/Delta/Incremental Loads	The data in this API will only refresh once per day	
Project Suite	Starting Version	23.6
	Ending Version	N/A

Supported Filters

All default OData filters are supported by this API.

Fields

Name	Type	Char Max Length	Numeric Precision	Scale	Required?	Product	P K
ScheduleActivityUserDefinedFieldId	uniqueidentifier	16	0		Y		P
ScheduleId	uniqueidentifier	16	0		N		F
Name	nvarchar(256)	256	0		Y		
ScheduleUserDefinedFieldDataTypeId	uniqueidentifier	16	0		Y		F

Field Descriptions

Name	Description	Example(s)
ScheduleActivityUserDefinedFieldId	A unique identifier assigned to an Activity User Defined Field. Not visible in the interface.	8cca5d10-dcef-44c1-a523-0dfb45dd2e9e
ScheduleId	A unique identifier assigned to each schedule record in the table. Formerly known as the Project Id.	c1ca6044-e7b7-4cf9-9a6b-54b63ee4668c
Name	The name of an activity User Defined Field.	StartLoc
ScheduleUserDefinedFieldDataTypeId	A unique identifier assigned to a User Defined Field's data type.	44ba61c1-e65c-4cda-8ffa-f53ae85ef50b

Sample

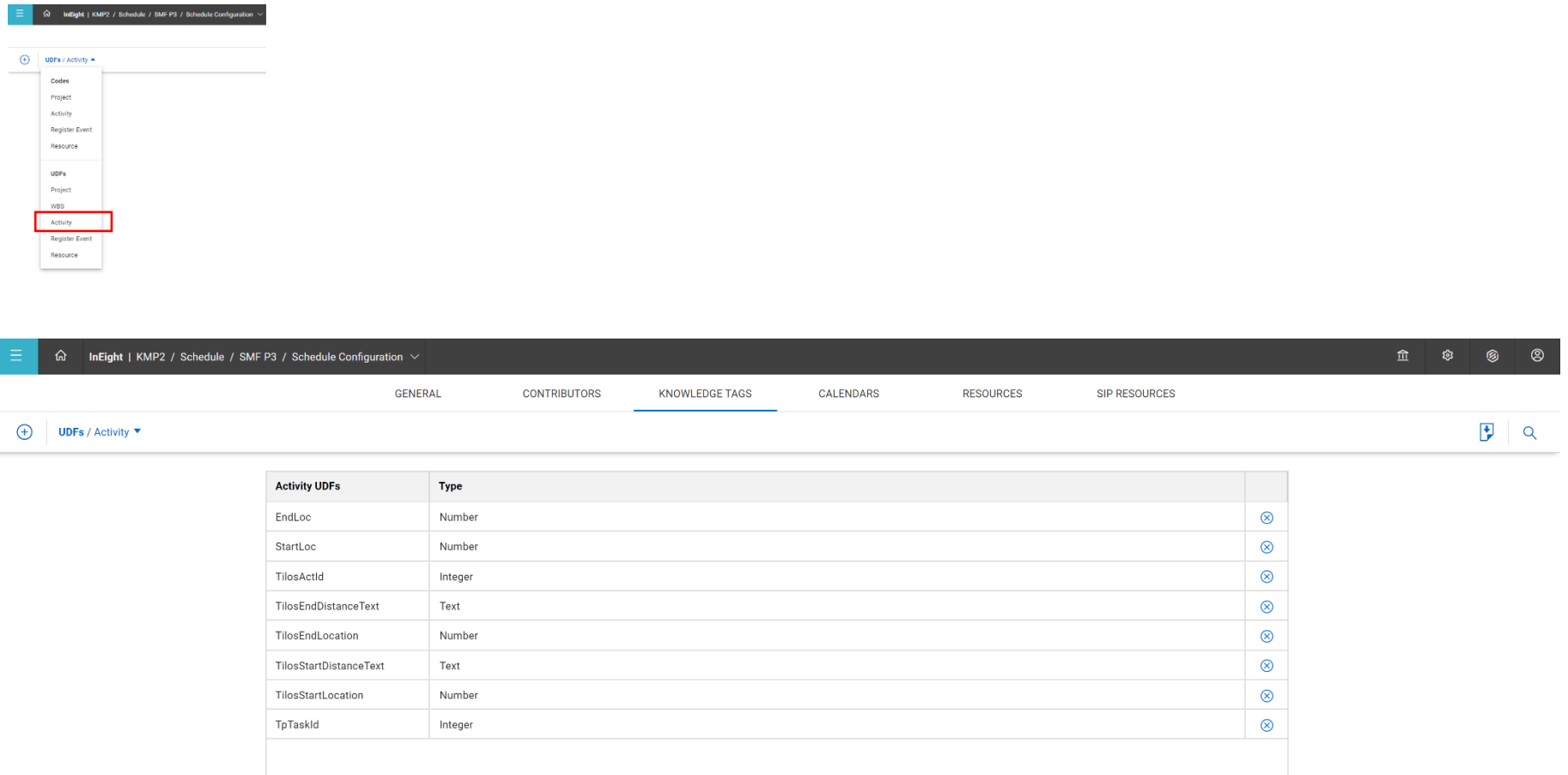
SelfService_Schedule_ScheduleActivityUserDefinedField

```
{"ScheduleActivityUserDefinedFieldId":"8cca5d10-dcef-44c1-a523-0dfb45dd2e9e",  
"ScheduleId":"c1ca6044-e7b7-4cfd-9a6b-54b63ee4668c",  
"Name":"StartLoc",  
"ScheduleUserDefinedFieldDataTypeId":"44ba61c1-e65c-4cda-8ffa-f53ae85ef50b"}
```

Data Validation

This data can be validated by navigating to the InEight Schedule application, opening a project schedule, select the Schedule Configuration view, select the Knowledge Tags tab, then selecting Activity from the UDF Code categories from the drop-down menu.

Figure 2. Schedule > Open a schedule > Schedule Configuration > Knowledge Tags > Codes > UDF/Activity



The screenshot shows the InEight Schedule application interface. The top navigation bar includes the breadcrumb path: InEight | KMP2 / Schedule / SMF P3 / Schedule Configuration. Below this, a dropdown menu is open for 'UDFs / Activity', with 'Activity' highlighted in a red box. The main content area shows the 'KNOWLEDGE TAGS' tab selected, displaying a table of Activity UDFs.

Activity UDFs	Type	
EndLoc	Number	⊗
StartLoc	Number	⊗
TilosActId	Integer	⊗
TilosEndDistanceText	Text	⊗
TilosEndLocation	Number	⊗
TilosStartDistanceText	Text	⊗
TilosStartLocation	Number	⊗
TpTaskId	Integer	⊗