



Explore API Documentation

SelfService_Schedule_ScheduleCalendar

Version 1.0

Last Modified: 5/3/2023

Last Modified By: Kimo Pickering



Change Log

This changelog only contains significant or notable changes to the revision. Any editorial-type changes or minor changes are not included.

Revision	Change Date	Description	Modified By
1.0	5/3/2023	Initial Draft	Kimo Pickering

Contents

Change Log	2
Overview	3
Relationships and Dependencies	3
API Detail	4
Supported Filters.....	4
Fields.....	5
Field Descriptions	6
Sample	8
Data Validation.....	9

Overview

The SelfService_Schedule_ScheduleCalendar API is one of multiple APIs comprising the data contained in the Schedule Calendar entity. The values contained in the table are derived from the application's Plan view when an activity is created and assigned a project calendar. Project calendars are created in the Schedule Configuration module. Calendars define the workdays, work hours, holidays, and any exceptions for the activities they are assigned to.

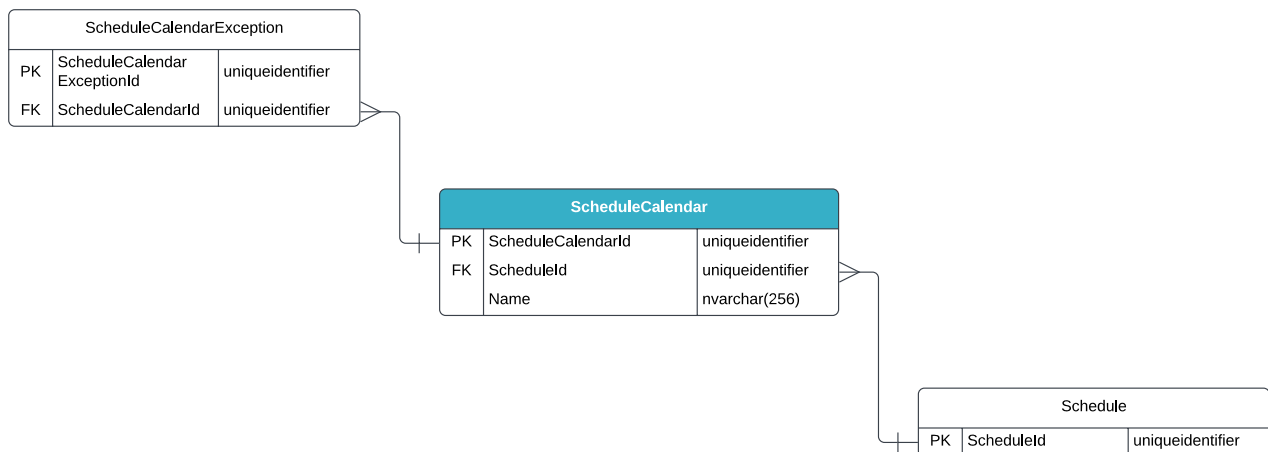
Relationships and Dependencies

From: Table ¹	To: Table ¹	Relationship	Cardinality ²
ScheduleCalendarException(SCE)	ScheduleCalendar(SCA)	SCE.ScheduleCalendarId : SCA.ScheduleCalendarId	M:1
ScheduleCalendar(SCA)	Schedule(S)	SCA.ScheduleId : S.ScheduleId	M:1

¹ Prefix table name with "SelfService_Schedule_" and exclude table abbreviation for queries (e.g., SelfService_Schedule_ScheduleCalendar)

² 1:M = One to Many, 1:1 = One to One, M:1 = Many to one

Figure 1. SelfService_Schedule_ScheduleCalendar ER Diagram



API Detail

Direction	From Project Suite	
Pagination	50,000 Rows	
Frequency	All Reporting APIs are used by calling a GET method at an interval determined by the customer. InEight suggests using these APIs on an infrequent basis (once per day) to avoid potential performance impact to live systems when the returned data set could be large.	
Trigger Method(s)	All default OData filters are supported	
Average Payload Size	Depends on date range selected	
APIM Name	SelfService_Schedule_ScheduleCalendar	
Data Refresh/Delta/Incremental Loads	This API will only refresh once per day	
Project Suite	Starting Version	23.8
	Ending Version	N/A

Supported Filters

All default OData filters are supported by this API.

Fields

Name	Type	Char Max Length	Numeric Precision	Required?	Key?
ScheduleCalendarId	uniqueidentifier	16	0	Y	P
ScheduleId	uniqueidentifier	16	0	N	F
Name	nvarchar(256)	256	0	Y	
IsDefault	bit	1	1	Y	
TimePeriodHoursPerDay	float	8	53	Y	
SundayJson	nvarchar(1000)	1000	0	N	
MondayJson	nvarchar(1000)	1000	0	N	
TuesdayJson	nvarchar(1000)	1000	0	N	
WednesdayJson	nvarchar(1000)	1000	0	N	
ThursdayJson	nvarchar(1000)	1000	0	N	
FridayJson	nvarchar(1000)	1000	0	N	
SaturdayJson	nvarchar(1000)	1000	0	N	
CreatedDate	datetimeoffset	10	34	Y	
CreatedById	bigint	19	19	Y	
ModifiedDate	datetimeoffset	10	34	Y	
ModifiedById	bigint	19	19	Y	
RowVersion	Bigint	Null	Null	Null	Y

Field Descriptions

Name	Description	Example(s)
ScheduleCalendarId	A unique identifier assigned to each calendar in a schedule. Not visible in the interface.	80eee2f3-578d-4de6-9670-5720e4ffff6f
ScheduleId	A unique identifier assigned to each schedule record in the table. Formerly known as the Project Id.	fa3d05a6-891f-40eb-98d8-2b23b70fe260
Name	The name of the calendar assigned to an activity.	5x8 days standard with Holidays
IsDefault	Indicates if the selected calendar is the default calendar used for schedule activities. 0 = False, 1 = True.	1
TimePeriodHoursPerDay	The work hours per day defined by a calendar.	8
SundayJson	The time of day, in 24-hour format, is designated as part of the work hours calculation. Values are formatted using the JSON format. Not visible in the interface.	
MondayJson	The time of day, in 24-hour format, is designated as part of the work hours calculation. Values are formatted using the JSON format. Not visible in the interface.	{ "8":true, "8.5":true, "9":true, "9.5":true, "10":true, "10.5":true, "11":true, "11.5":true, "13":true, "13.5":true, "14":true, "14.5":true, "15":true, "15.5":true, "16":true, "16.5":true }
TuesdayJson	The time of day, in 24-hour format, designated as part of the work hours calculation. Values are formatted using the JSON format. Not visible in the interface.	{ "8":true, "8.5":true, "9":true, "9.5":true, "10":true, "10.5":true, "11":true, "11.5":true, "13":true, "13.5":true, "14":true, "14.5":true, "15":true, "15.5":true, "16":true, "16.5":true }
WednesdayJson	The time of day, in 24-hour format, is designated as part of the work hours calculation. Values are formatted using the JSON format. Not visible in the interface.	{ "8":true, "8.5":true, "9":true, "9.5":true, "10":true, "10.5":true, "11":true, "11.5":true, "13":true, "13.5":true, "14":true, "14.5":true, "15":true, "15.5":true, "16":true, "16.5":true }
ThursdayJson	The time of day, in 24-hour format, designated as part of the work hours calculation. Values are formatted using the JSON format. Not visible in the interface.	{ "8":true, "8.5":true, "9":true, "9.5":true, "10":true, "10.5":true, "11":true, "11.5":true, "13":true, "13.5":true, "14":true, "14.5":true, "15":true, "15.5":true, "16":true, "16.5":true }
FridayJson	The time of day, in 24-hour format, is designated as part of the work hours calculation. Values are formatted using the JSON format. Not visible in the interface.	{ "8":true, "8.5":true, "9":true, "9.5":true, "10":true, "10.5":true, "11":true, "11.5":true, "13":true, "13.5":true, "14":true, "14.5":true, "15":true, "15.5":true, "16":true, "16.5":true }
SaturdayJson	The time of day, in 24-hour format, is designated as part of the work hours calculation. Values are formatted using the JSON format. Not visible in the interface.	

CreatedDate	Date/timestamp the item is created.	2020-02-18 14:55.000 + 00.00
CreatedByld	The unique identifier of the user who created the item. Not visible in the Interface.	85136477
ModifiedDate	Date/timestamp the item was modified.	2020-06-08 10:47.394 + 00.00
ModifiedByld	The unique identifier of the user who modified the item. Not visible in the Interface.	29834765
RowVersion	An indicator if a row has been updated. if this value is greater than the stored value, then update record.	54582065

Sample

[https://\[tenant\].hds.ineight.com/reportwebservices/odata/SelfService_Schedule_ScheduleCalendar](https://[tenant].hds.ineight.com/reportwebservices/odata/SelfService_Schedule_ScheduleCalendar)

```
{"ScheduleCalendarId":{"ScheduleCalendarId":"80eee2f3-578d-4de6-9670-5720e4ffff6f",", {"ScheduleId":{"ScheduleId":"fa3d05a6-891f-40eb-98d8-2b23b70fe260",", {"Name":{"Name":"5x8 days standard with Holidays",", {"IsDefault":{"IsDefault":"1",", {"TimePeriodHoursPerDay":{"TimePeriodHoursPerDay":"8",", {"SundayJson":{"SundayJson",", {"MondayJson":{"MondayJson":{"8":true,"8.5":true,"9":true,"9.5":true,"10":true,"10.5":true,"11":true,"11.5":true,"13":true,"13.5":true,"14":true,"14.5":true,"15":true,"15.5":true,"16":true,"16.5":true}},", {"TuesdayJson":{"TuesdayJson":{"8":true,"8.5":true,"9":true,"9.5":true,"10":true,"10.5":true,"11":true,"11.5":true,"13":true,"13.5":true,"14":true,"14.5":true,"15":true,"15.5":true,"16":true,"16.5":true}},", {"WednesdayJson":{"WednesdayJson":{"8":true,"8.5":true,"9":true,"9.5":true,"10":true,"10.5":true,"11":true,"11.5":true,"13":true,"13.5":true,"14":true,"14.5":true,"15":true,"15.5":true,"16":true,"16.5":true}},", {"ThursdayJson":{"ThursdayJson":{"8":true,"8.5":true,"9":true,"9.5":true,"10":true,"10.5":true,"11":true,"11.5":true,"13":true,"13.5":true,"14":true,"14.5":true,"15":true,"15.5":true,"16":true,"16.5":true}},", {"FridayJson":{"FridayJson":{"8":true,"8.5":true,"9":true,"9.5":true,"10":true,"10.5":true,"11":true,"11.5":true,"13":true,"13.5":true,"14":true,"14.5":true,"15":true,"15.5":true,"16":true,"16.5":true}},", {"SaturdayJson":{"SaturdayJson",", {"CreatedDate":"2020-02-18 14:55.000 + 00.00", {"CreatedById":{"CreatedById":"85136477",", {"ModifiedDate":"2020-06-08 10:47.394 + 00.00", {"ModifiedById":{"ModifiedById":"29834765",}}
```


Data Validation

Schedule calendars are created in the Schedule Configuration module. Navigate to the Schedule Configuration view and click on the Calendars tab. Individual calendars are assigned to schedule activities when an activity is created. To view the calendars assigned to any schedule activity, enable the “Calendar” column in the Plan view of the application. See images below.

Figure 2. Schedule > Schedule Configuration > CALENDARS

InEight KMP2 / Schedule / 01-US-10 DB / Schedule Configuration											
GENERAL CONTRIBUTORS KNOWLEDGE TAGS <u>CALENDARS</u> RESOURCES SIP RESOURCES											
★	Calendar	Hours/day	Sun	Mon	Tue	Wed	Thu	Fri	Sat	Exceptions	Actions
<input checked="" type="radio"/>	KMP2 8Hr 5Day Company Holidays	8	○	●	●	●	●	●	○	49	
<input type="radio"/>	5WD 9H NH	9	○	●	●	●	●	●	○	0	
<input type="radio"/>	5WD 9H WH	9	○	●	●	●	●	●	○	50	
<input type="radio"/>	5WD 9H WH	9	○	●	●	●	●	●	○	24	
<input type="radio"/>	7WD 8H	8	●	●	●	●	●	●	●	2	
<input type="radio"/>	7WD 8H	8	●	●	●	●	●	●	●	0	
<input type="radio"/>	AC Paving	8	○	●	●	●	●	●	○	1188	
<input type="radio"/>	KMP2 24hr 7Day No Holidays	24	●	●	●	●	●	●	●	0	



Figure 3. Schedule > Plan view

