



# Explore API Documentation

SelfService\_Schedule\_ScheduleCode

Version 1.0

Last Modified: 4/10/2023

Last Modified By: Kimo Pickering

## Change Log

This changelog only contains significant or notable changes to the revision. Any editorial-type changes or minor changes are not included.

Revision	Change Date	Description	Modified By
1.0	4/10/2023	Initial Draft	Kimo Pickering

## Contents

---

Change Log.....	2
Overview.....	3
Relationships and Dependencies.....	3
API Detail.....	4
Supported Filters.....	4
Fields.....	4
Field Descriptions.....	4
Sample.....	5
Data Validation.....	6

## Overview

The SelfService\_Schedule\_ScheduleCode API is one of multiple APIs comprising the data contained in the Schedule entity. The SelfService\_Schedule\_ScheduleCode table contains the custom Project Codes (tags) at the project level that have been assigned or are ready to be assigned to individual schedules. Each Schedule Project Code can contain multiple values for the user to choose from and be structured in a hierarchical format.

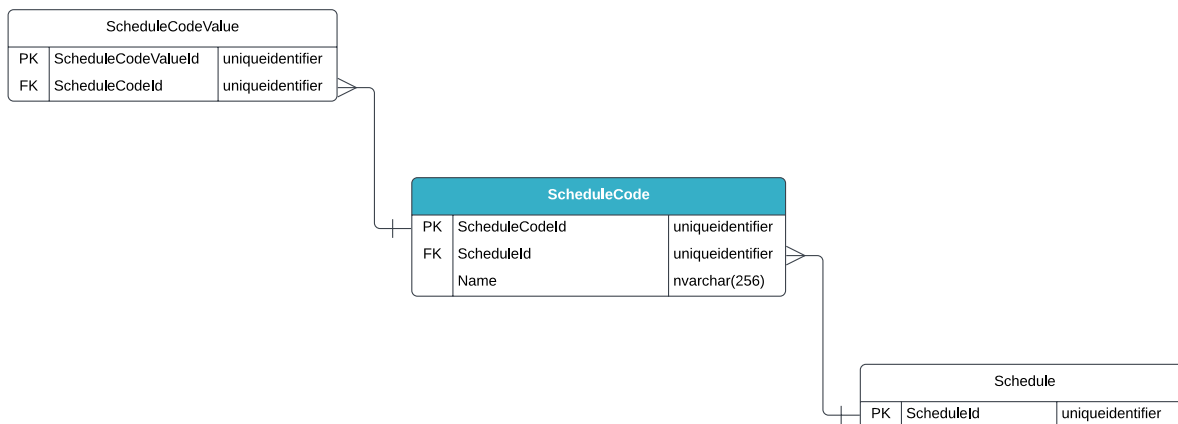
## Relationships and Dependencies

From: Table <sup>1</sup>	To: Table <sup>1</sup>	Relationship	Cardinality <sup>2</sup>	Comment
ScheduleCodeValue(SCDV)	ScheduleCode (SCD)	SCDV.ScheduleCodeId : SCD.ScheduleCodeId	M:1	
ScheduleCode(SCD)	Schedule(S)	SCD.ScheduleId : S.ScheduleId	M:1	

<sup>1</sup> Prefix table name with "SelfService\_Schedule\_" and exclude table abbreviation for queries (e.g., SelfService\_Schedule\_ScheduleCode)

<sup>2</sup> 1:M = One to Many, 1:1 = One to One, M:1 = Many to one

Figure 1. SelfService\_Schedule\_ScheduleCode ER Diagram



## API Detail

Direction	From Project Suite	
Pagination	50,000 Rows	
Frequency	All Reporting APIs are used by calling a GET method at an interval determined by the customer. InEight suggests using these APIs on an infrequent basis (once per day) to avoid potential performance impact to live systems when the returned data set could be large.	
Trigger Method(s)	All default OData filters are supported	
Average Payload Size	Depends on date range selected	
APIM Name	SelfService_Schedule_ScheduleCode	
Data Refresh/Delta/Incremental Loads	The data in this API will only refresh once per day	
Project Suite	Starting Version	23.10
	Ending Version	N/A

## Supported Filters

All default OData filters are supported by this API.

## Fields

Name	Type	Char Max Length	Numeric Precision	Scale	Required?	Product	PK
ScheduleCodeId	uniqueidentifier	16	0		Y		P
ScheduleId	uniqueidentifier	16	0		Y		F
Name	nvarchar(256)	256	0		Y		
RowVersion	Bigint	Null	Null	Null	Y		

## Field Descriptions

Name	Description	Example(s)
ScheduleCodeId	A unique identifier assigned to a Schedule Project Code. Not visible in the interface.	293ac2a0-3d38-4a22-a2ef-751c0a9c6d2d
ScheduleId	A unique identifier assigned to each schedule record in the table. Formerly known as the Project Id.	70024912-5e3c-4de9-beda-edcbc0c66566
Name	The name of the Schedule Project Code.	Client

RowVersion	An indicator if a row has been updated. if this value is greater than the stored value, then update record.	54582065
------------	---	----------

## Sample

### SelfService\_Schedule\_ScheduleCode

```
{"ScheduleCodeId": "293ac2a0-3d38-4a22-a2ef-751c0a9c6d2d",  
  "ScheduleId": "70024912-5e3c-4de9-beda-edcbc0c66566",  
  "Name": "Client"}
```

## Data Validation

The Schedule Project Codes created for a project schedule can be found by opening a schedule, navigating to the Schedule Configuration view, selecting the Knowledge Tags tab, then selecting Project under the Codes section from the dropdown menu shown in blue text (1) in the image below. This is where Schedule Project Codes can be created, added, and/or edited for a project schedule.

Figures 2. Schedule > Schedule Configuration > Knowledge Tags > Codes/Project

The screenshot shows the InEight software interface. The breadcrumb navigation at the top reads: InEight | KMP2 / Schedule / US-10 DB / Schedule Configuration. Below this are tabs for GENERAL, CONTRIBUTORS, KNOWLEDGE TAGS (which is selected), CALENDARS, RESOURCES, and SIP RESOURCES. On the left, a dropdown menu is open under 'Codes / Project'. The menu has two sections: 'Codes' and 'UDFs'. Under 'Codes', the 'Project' option is highlighted with a red arrow and the number '1'. Other options in the 'Codes' section include Activity, Register Event, and Resource. Under 'UDFs', the options are Project, WBS, Activity, Register Event, and Resource. The main content area displays a table titled 'Project Codes' with the following data:

Project Codes		
Archive Now		
Client		
Client Type		
Contract Payment Type		
Contract Type		
Contract Value		
Portfolio		
Risk		
Schedule Status		
Type of Schedule		