



Explore API Documentation

SelfService_Schedule_ScheduleCodeValue

Version 1.0

Last Modified: 4/11/2023

Last Modified By: Kimo Pickering

Change Log

This changelog only contains significant or notable changes to the revision. Any editorial-type changes or minor changes are not included.

Revision	Change Date	Description	Modified By
1.0	4/11/2023	Initial Draft	Kimo Pickering

Contents

Change Log.....	2
Overview.....	3
Relationships and Dependencies.....	3
API Detail.....	4
Supported Filters.....	4
Fields.....	4
Field Descriptions.....	5
Sample.....	5
Data Validation.....	6

Overview

The SelfService_Schedule_ScheduleCodeValue API is one of multiple APIs comprising the data contained in the Schedule Codes entity. The SelfService_Schedule_ScheduleCodeValue table contains the custom Project Code values (tags) at the project level that have been assigned or are ready to be assigned to individual schedules. The codes and their values are created in the application's Schedule Configuration view's Knowledge Tags tab. Each Schedule Code ("Project Code") can contain multiple values for the user to choose from and be structured in a hierarchical format.

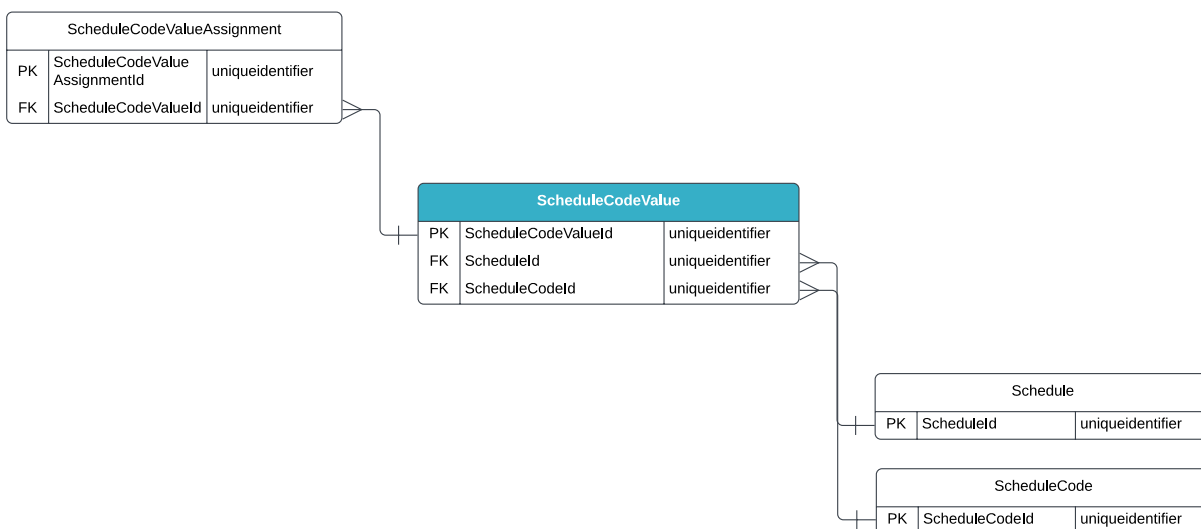
Relationships and Dependencies

From: Table ¹	To: Table ¹	Relationship	Cardinality ²	Comment
ScheduleCodeValue Assignment(SCDVA)	ScheduleCodeValue(SCDV)	SCDVA.ScheduleCodeValueId : SCDV.ScheduleCodeValueId	M:1	
ScheduleCodeValue(SCDV)	Schedule(S)	SCDV.ScheduleId : S.ScheduleId	M:1	
ScheduleCodeValue(SCDV)	ScheduleCode(SCD)	SCDV.ScheduleCodeId : SCD.ScheduleCodeId	M:1	

¹ Prefix table name with "SelfService_Schedule_" and exclude table abbreviation for queries (e.g., SelfService_Schedule_ScheduleCodeValue)

² 1:M = One to Many, 1:1 = One to One, M:1 = Many to one

Figure 1. SelfService_Schedule_ScheduleCodeValue ER Diagram



API Detail

Direction	From Project Suite	
Pagination	50,000 Rows	
Frequency	All Reporting APIs are used by calling a GET method at an interval determined by the customer. InEight suggests using these APIs on an infrequent basis (once per day) to avoid potential performance impact to live systems when the returned data set could be large.	
Trigger Method(s)	All default OData filters are supported	
Average Payload Size	Depends on date range selected	
APIM Name	SelfService_Schedule_ScheduleCodeValue	
Data Refresh/Delta/Incremental Loads	The data in this API will only refresh once per day	
Project Suite	Starting Version	23.10
	Ending Version	N/A

Supported Filters

All default OData filters are supported by this API.

Fields

Name	Type	Char Max Length	Numeric Precision	Scale	Required?	Product	PK
ScheduleCodeValueId	uniqueidentifier	16	0		Y		P
ParentId	uniqueidentifier	16	0		Y		F
ScheduleId	uniqueidentifier	16	0		Y		F
ScheduleCodeId	uniqueidentifier	16	0		Y		F
Value	nvarchar(256)	256	0		Y		
Description	nvarchar(256)	256	0		Y		
Position	int	4	10		Y		
RowVersion	Bigint	Null	Null	Null	Y		

Field Descriptions

Name	Description	Example(s)
ScheduleCodeValueId	A unique identifier assigned to a Schedule Project Code's value. Not visible in the interface.	fc3662f3-f5f2-4067-a6de-aedbbe89d51a
ParentId	The ID of the Code Value that is the parent of the selected Code Value item.	29c69c0f-bdba-40d8-bedd-8f81921d51cc
ScheduleId	A unique identifier assigned to each schedule record in the table. Formerly known as the Project Id.	883e3bd0-7a30-4d2d-a2f3-90d47f643235
ScheduleCodeId	A unique identifier assigned to a Schedule Project Code. Not visible in the interface.	8172067f-ca1b-4437-b324-ca1a20d29592
Value	The value assigned to a Schedule Project Code.	D-B
Description	The description of a Schedule Project Code Value.	Design-Build
Position	The ranking order of a Schedule Project Code value in a list of code values for a Schedule Project Code.	2
RowVersion	An indicator if a row has been updated. if this value is greater than the stored value, then update record.	54582065

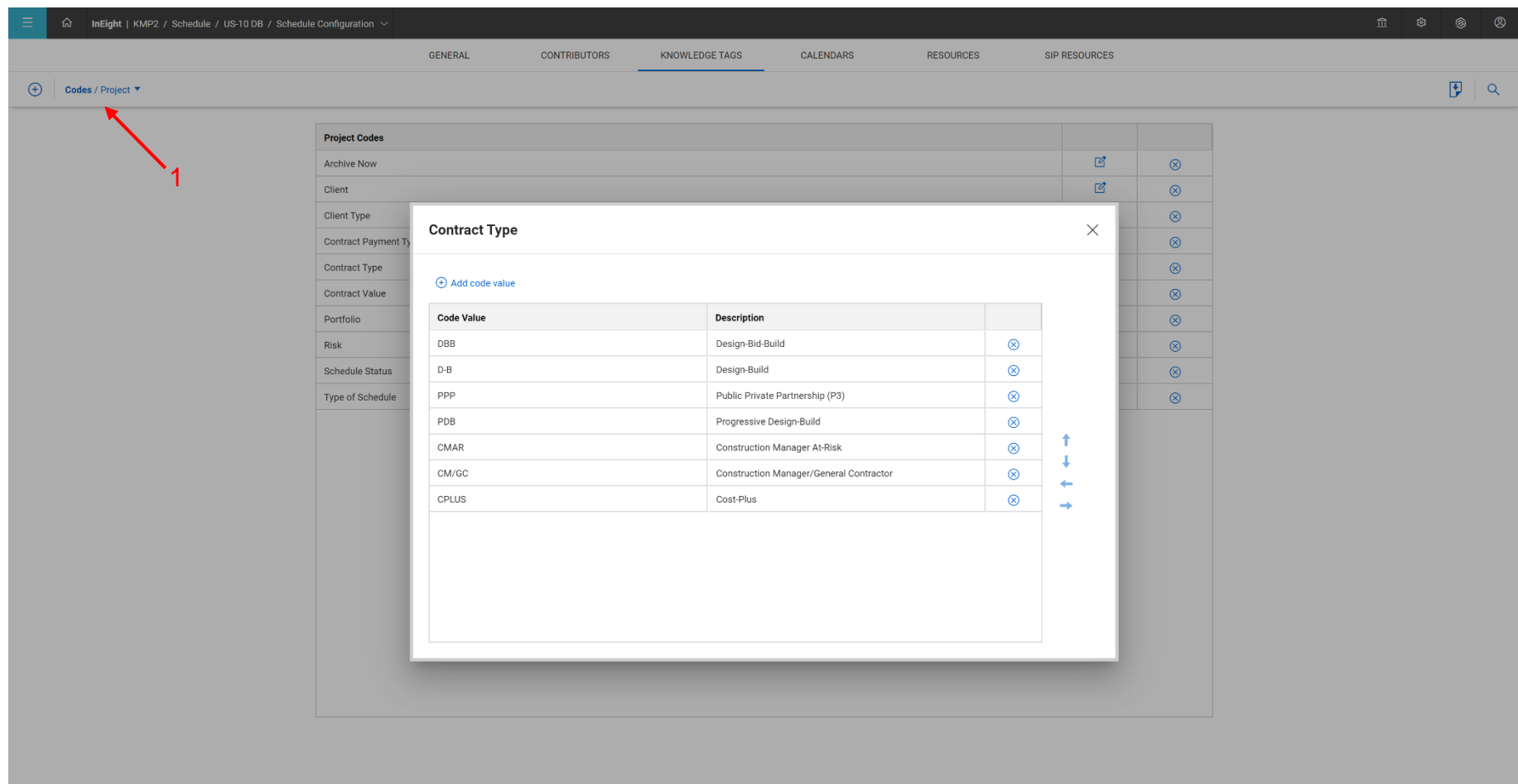
Sample

```
{
  "ScheduleCodeValueId": "fc3662f3-f5f2-4067-a6de-aedbbe89d51a",
  "ParentId": "29c69c0f-bdba-40d8-bedd-8f81921d51cc",
  "ScheduleId": "883e3bd0-7a30-4d2d-a2f3-90d47f643235",
  "ScheduleCodeId": "8172067f-ca1b-4437-b324-ca1a20d29592",
  "Value": "D-B",
  "Description": "Design-Build",
  "Position": "2"
}
```

Data Validation

The Schedule Project Codes created for a project schedule can be found by opening a schedule, navigating to the Schedule Configuration view, selecting the Knowledge Tags tab, then selecting Project under the Codes section from the dropdown menu shown in blue text (1) in the image below. This is where Schedule Project Codes and their values can be created and/or edited for a project schedule. After Schedule Project Code values are created, they are ready to be assigned to a Project's schedule from the application's main home page.

Figures 2. Schedule > Schedule Configuration > Knowledge Tags > Codes/Project > edit “Contract Type”



The screenshot displays the InEight application interface. The top navigation bar includes a home icon, the text "InEight | KMP2 / Schedule / US-10 DB / Schedule Configuration", and several utility icons. Below the navigation bar, a horizontal menu contains tabs for "GENERAL", "CONTRIBUTORS", "KNOWLEDGE TAGS", "CALENDARS", "RESOURCES", and "SIP RESOURCES". The "KNOWLEDGE TAGS" tab is active. A dropdown menu labeled "Codes / Project" is open, with a red arrow labeled "1" pointing to it. The main content area shows a "Project Codes" table with columns for "Code Value", "Description", and a status icon. A modal window titled "Contract Type" is overlaid on the table, containing a table with the following data:

Code Value	Description	
DBB	Design-Bid-Build	⊗
D-B	Design-Build	⊗
PPP	Public Private Partnership (P3)	⊗
PDB	Progressive Design-Build	⊗
CMAR	Construction Manager At-Risk	⊗
CM/GC	Construction Manager/General Contractor	⊗
CPLUS	Cost-Plus	⊗

The modal window also includes a close button (X) in the top right corner, a search icon, and navigation arrows (up, down, left, right) on the right side.