



Explore API Documentation

SelfService_Schedule_ScheduleRegisterEventCode

Version 1.0

Last Modified: 4/5/2023

Last Modified By: Kimo Pickering

Change Log

This changelog only contains significant or notable changes to the revision. Any editorial-type changes or minor changes are not included.

Revision	Change Date	Description	Modified By
1.0	4/5/2023	Initial Draft	Kimo Pickering

Contents

Change Log.....	2
Overview.....	3
Relationships and Dependencies.....	3
API Detail.....	4
Supported Filters.....	4
Fields.....	4
Field Descriptions.....	4
Sample.....	5
Data Validation.....	6

Overview

The SelfService_Schedule_ScheduleRegisterEventCode API is one of multiple APIs comprising the data contained in the Schedule Register Event entity. The SelfService_Schedule_ScheduleRegisterEventCode table contains the custom Register Event Codes (tags) at the project level that have been assigned or are ready to be assigned to individual Risk Register Events. Each Register Event Code can contain multiple values for the user to choose from and be structured in a hierarchical format.

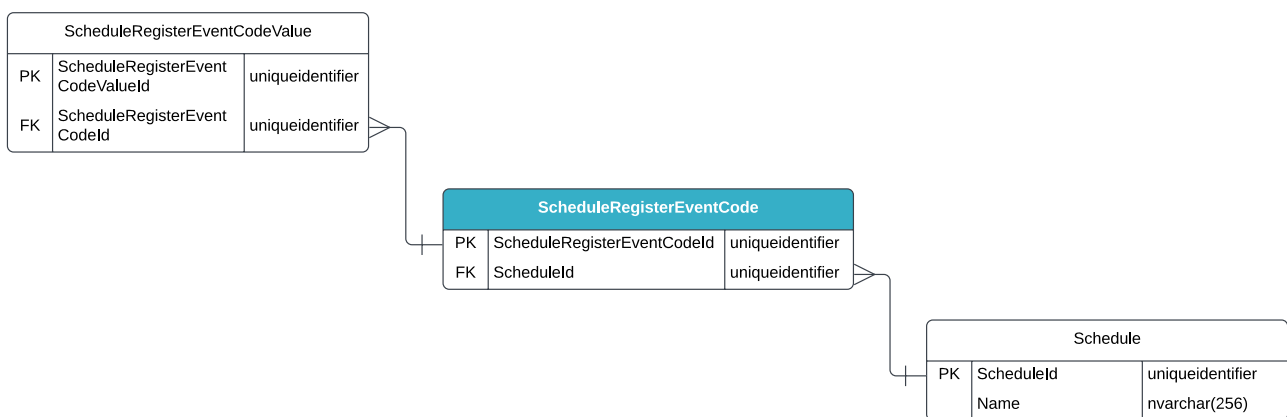
Relationships and Dependencies

From: Table ¹	To: Table ¹	Relationship	Cardinality ²	Comment
ScheduleRegisterEventCode Value(SRECDV)	ScheduleRegisterEventCode(SRECD)	SRECDV.ScheduleRegisterEventCodeId : SRECD.ScheduleRegisterEventCodeId	M:1	
ScheduleRegisterEventCode(SRECD)	Schedule(S)	SRECD.ScheduleId : S.ScheduleId	M:1	

¹ Prefix table name with "SelfService_Schedule_" and exclude table abbreviation for queries (e.g., SelfService_Schedule_ScheduleRegisterEventCode)

² 1:M = One to Many, 1:1 = One to One, M:1 = Many to one

Figure 1. SelfService_Schedule_ScheduleRegisterEventCode ER Diagram



API Detail

Direction	From Project Suite	
Pagination	50,000 Rows	
Frequency	All Reporting APIs are used by calling a GET method at an interval determined by the customer. InEight suggests using these APIs on an infrequent basis (once per day) to avoid potential performance impact to live systems when the returned data set could be large.	
Trigger Method(s)	All default OData filters are supported	
Average Payload Size	Depends on date range selected	
APIM Name	SelfService_Schedule_ScheduleRegisterEventCode	
Data Refresh/Delta/Incremental Loads	The data in this API will only refresh once per day	
Project Suite	Starting Version	23.6
	Ending Version	N/A

Supported Filters

All default OData filters are supported by this API.

Fields

Name	Type	Char Max Length	Numeric Precision	Scale	Required?	Product	PK
ScheduleRegisterEventCodeId	uniqueidentifier	16	0		Y		P
ScheduleId	uniqueidentifier	16	0		N		F
Name	nvarchar(256)	256	0		Y		

Field Descriptions

Name	Description	Example(s)
ScheduleRegisterEventCodeId	A unique identifier assigned to a Register Event Code. Not visible in the interface.	e84d17f2-ce11-4e2d-8932-06431e24ec0b
ScheduleId	A unique identifier assigned to each schedule record in the table. Formerly known as the Project Id.	c1ca6044-e7b7-4cfd-9a6b-54b63ee4668c
Name	The name of a Register Event Code.	EXP_JT-1

Sample

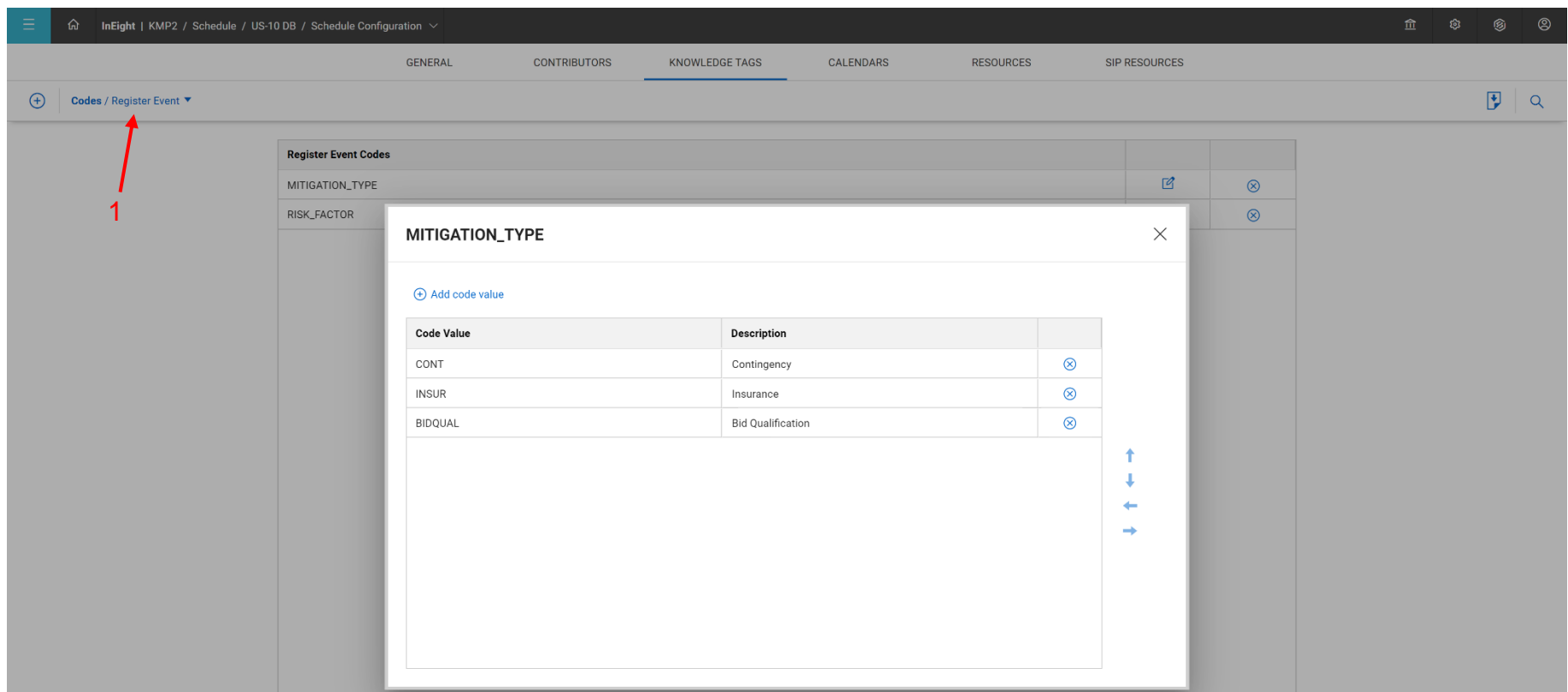
SelfService_Schedule_ScheduleRegisterEventCode

```
{"ScheduleRegisterEventCodeId":"e84d17f2-ce11-4e2d-8932-06431e24ec0b",  
"ScheduleId":"c1ca6044-e7b7-4cfd-9a6b-54b63ee4668c",  
"Name":"EXP_JT-1"}
```

Data Validation

The Register Event Codes created for a project schedule can be found by opening a schedule, navigating to the Schedule Configuration view, selecting the Knowledge Tags tab, then selecting Register Event under the Codes section from the dropdown menu shown in blue text (1) in the image below. This is where Register Event Codes can be created, added, and/or edited for a project schedule.

Figure 2. Schedule > Schedule Configuration > Knowledge Tags > Codes/Register Event > add/edit Register Event Code



The screenshot displays the InEight software interface for configuring Register Event Codes. The breadcrumb trail is: InEight | KMP2 / Schedule / US-10 DB / Schedule Configuration. The 'KNOWLEDGE TAGS' tab is active, and the 'Codes / Register Event' dropdown menu is open, indicated by a red arrow and the number '1'. A modal window titled 'MITIGATION_TYPE' is open, showing a table with the following data:

Code Value	Description	
CONT	Contingency	⊗
INSUR	Insurance	⊗
BIDQUAL	Bid Qualification	⊗

The modal also includes an 'Add code value' link and navigation arrows.