



Explore API Documentation

SelfService_Schedule_ScheduleRegisterEventCodeValueAssignment

Version 1.0

Last Modified: 4/5/2023

Last Modified By: Kimo Pickering

Change Log

This changelog only contains significant or notable changes to the revision. Any editorial-type changes or minor changes are not included.

Revision	Change Date	Description	Modified By
1.0	4/5/2023	Initial Draft	Kimo Pickering

Contents

- Change Log.....2
- Overview3
- Relationships and Dependencies3
- API Detail.....5
- Supported Filters.....5
- Fields5
- Field Descriptions.....6
- Sample7
- Data Validation8

Overview

The SelfService_Schedule_ScheduleRegisterEventCodeValueAssignment API is one of multiple APIs comprising the data contained in the Schedule Register Event entity. The SelfService_Schedule_ScheduleRegisterEventCodeValueAssignment table contains the custom Register Event Code Value Assignment unique identifiers assigned or ready to be assigned to individual Risk Register Events in a project schedule.

Relationships and Dependencies

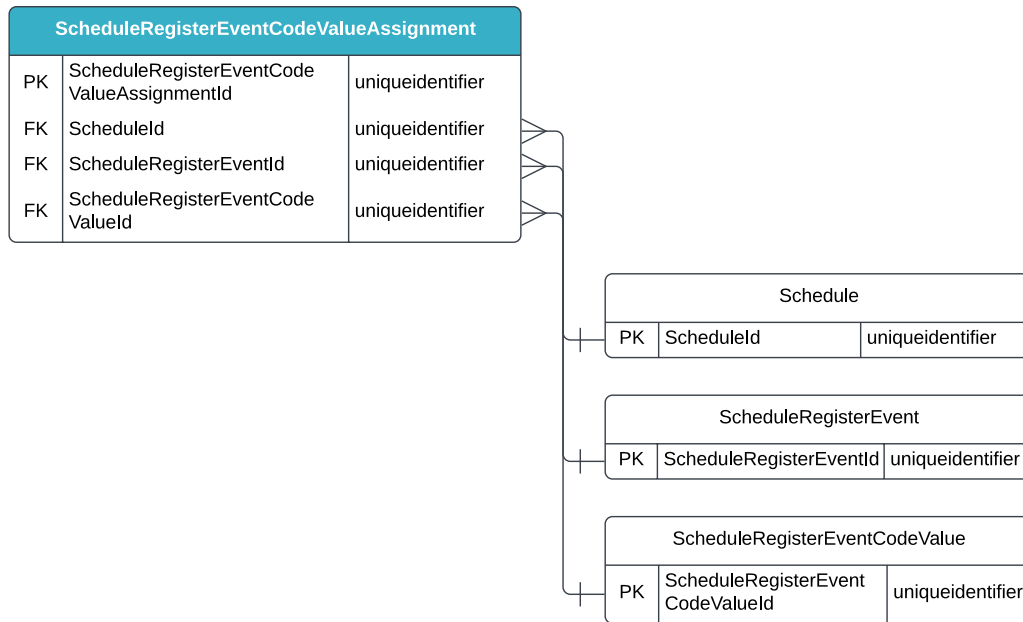
From: Table ¹	To: Table ¹	Relationship	Cardinality ²	Comment
ScheduleRegisterEventCodeValueAssignment(SRECDVA)	Schedule(S)	SRECDVA.ScheduleId : S.ScheduleId	M:1	
ScheduleRegisterEventCodeValueAssignment(SRECDVA)	ScheduleRegisterEvent(SRE)	SRECDVA.ScheduleRegisterEventId : SRE.ScheduleRegisterEventId	M:1	
ScheduleRegisterEventCodeValueAssignment(SRECDVA)	ScheduleRegisterEventCodeValue(SRECDV)	SRECDVA.ScheduleRegisterEventCodeValueId : SRECDV.ScheduleRegisterEventCodeValueId	M:1	

¹ Prefix table name with "SelfService_Schedule_" and exclude table abbreviation for queries (e.g., SelfService_Schedule_ScheduleRegisterEventCodeValueAssignment)

² 1:M = One to Many, 1:1 = One to One, M:1 = Many to one



Figure 1. SelfService_Schedule_ScheduleRegisterEventCodeValueAssignment ER Diagram



API Detail

Direction	From Project Suite	
Pagination	50,000 Rows	
Frequency	All Reporting APIs are used by calling a GET method at an interval determined by the customer. InEight suggests using these APIs on an infrequent basis (once per day) to avoid potential performance impact to live systems when the returned data set could be large.	
Trigger Method(s)	All default OData filters are supported	
Average Payload Size	Depends on date range selected	
APIM Name	SelfService_Schedule_ScheduleRegisterEventCodeValueAssignment	
Data Refresh/Delta/Incremental Loads	The data in this API will only refresh once per day	
Project Suite	Starting Version	23.6
	Ending Version	N/A

Supported Filters

All default OData filters are supported by this API.

Fields

Name	Type	Char Max Length	Numeric Precision	Scale	Required ?	Product	PK
ScheduleRegisterEventCodeValueAssignmentId	uniqueidentifier	16	0		Y		P
ScheduleId	uniqueidentifier	16	0		Y		F
ScheduleRegisterEventId	uniqueidentifier	16	0		Y		F
ScheduleRegisterEventCodeValueId	uniqueidentifier	16	0		Y		F

Field Descriptions

Name	Description	Example(s)
ScheduleRegisterEventCodeValueAssignmentId	A unique identifier assigned to a Register Event Code Value Assignment. Not visible in the interface.	90217bd7-7c30-413f-ad58-be54157111a4
ScheduleId	A unique identifier assigned to each schedule record in the table. Formerly known as the Project Id.	79bf6b4d-a992-455c-b4e3-0618e8cec60c
ScheduleRegisterEventId	A unique identifier assigned to the selected Register Event. Not visible in the interface.	b03f4298-d13d-4ed5-ae1a-84f779a7cfb5
ScheduleRegisterEventCodeValueId	A unique identifier assigned to a Register Event Code Value. Not visible in the interface.	6ed2f7e3-5a5c-42c6-a2f3-815406d1a640

Sample

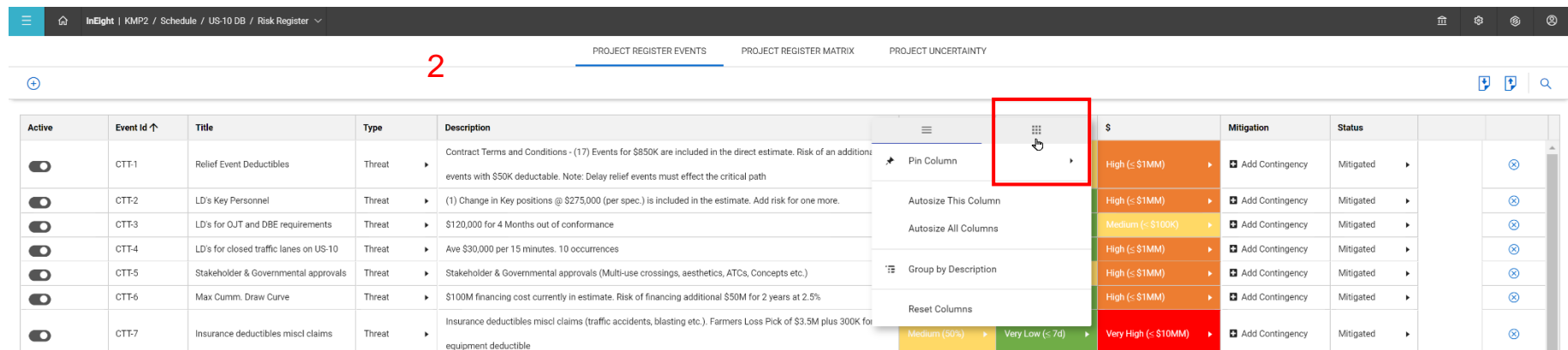
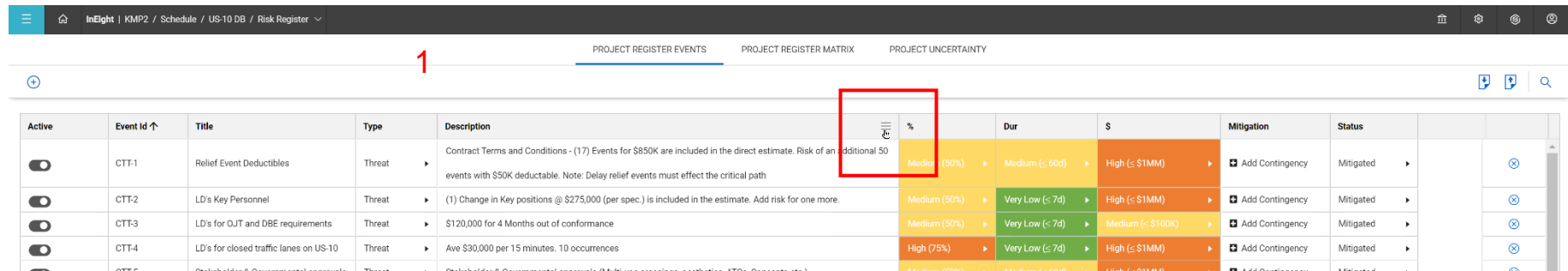
SelfService_Schedule_ScheduleRegisterEventCodeValueAssignment

```
{"ScheduleRegisterEventCodeValueAssignmentId":"90217bd7-7c30-413f-ad58-be54157111a4",  
"ScheduleId":"79bf6b4d-a992-455c-b4e3-0618e8cec60c",  
"ScheduleRegisterEventId":"b03f4298-d13d-4ed5-ae1a-84f779a7cfb5",  
"ScheduleRegisterEventCodeValueId":"6ed2f7e3-5a5c-42c6-a2f3-815406d1a640"}
```

Data Validation

The Register Event Code Values that have been assigned to any Risk Register event for a project schedule can be found by opening a schedule and navigating to the Risk Register view. By default, any Register Event Codes created for the project will not be visible in the Risk Register view. They can be made visible by hovering over any column header, selecting the tribar icon (aka, hamburger button) (1), then selecting the grid icon that becomes visible (2), and finally clicking in the check boxes of any Register Event Codes (3) to add to the Risk Register as additional columns (4).

Figures 2, 4, 5, 6. Schedule > Risk Register view > Register Event Code column chooser steps



3

Active	Event Id ↑	Title	Type	Description	\$	Mitigation	Status
<input type="checkbox"/>	CTT1	Relief Event Deductibles	Threat	Contract Terms and Conditions - (17) Events for \$850K are included in the direct estimate. Risk of an additional 50 events with \$50K deductible. Note: Delay relief events must effect the critical path	High (< \$1MM)	Add Contingency	Mitigated
<input type="checkbox"/>	CTT2	LD's Key Personnel	Threat	(1) Change in Key positions @ \$275,000 (per spec) is included in the estimate. Add risk for one more.	High (< \$1MM)	Add Contingency	Mitigated
<input type="checkbox"/>	CTT3	LD's for OJT and DBE requirements	Threat	\$120,000 for 4 Months out of conformance	Medium (< \$100K)	Add Contingency	Mitigated
<input type="checkbox"/>	CTT4	LD's for closed traffic lanes on US-10	Threat	Ave \$30,000 per 15 minutes. 10 occurrences	High (< \$1MM)	Add Contingency	Mitigated
<input type="checkbox"/>	CTT5	Stakeholder & Governmental approvals	Threat	Stakeholder & Governmental approvals (Multi-use crossings, aesthetics, ATCs, Concepts etc.)	High (< \$1MM)	Add Contingency	Mitigated
<input type="checkbox"/>	CTT6	Max Cum. Draw Curve	Threat	\$100M financing cost currently in estimate. Risk of financing additional \$50M for 2 years at 2.5%	High (< \$1MM)	Add Contingency	Mitigated
<input type="checkbox"/>	CTT7	Insurance deductibles misc claims	Threat	Insurance deductibles misc claims (traffic accidents, blasting etc.). Farmers Loss Pick of \$3.5M plus 300K for equipment deductible	Very High (< \$10MM)	Add Contingency	Mitigated
<input type="checkbox"/>	CTT8	Premium to reach DBE goals	Threat	To obtain the last \$45m of participation. Pay a 5% premium	Low (25%)		Mitigated

- Search...
- Markup
- MITIGATION_TYPE
- RISK_FACTOR
- Risk Owner
- Schedule
- Created By

4

Active	Event Id ↑	Title	Type	Description	%	Dur	\$	Mitigation	Status	MITIGATION_TYPE	RISK_FACTOR
<input type="checkbox"/>	CTT1	Relief Event Deductibles	Threat	Contract Terms and Conditions - (17) Events for \$850K are included in the direct estimate. Risk of an additional 50 events with \$50K deductible. Note: Delay relief events must effect the critical path	Medium (50%)	Medium (< 60d)	High (< \$1MM)	Add Contingency	Mitigated	CONT	RF-40
<input type="checkbox"/>	CTT2	LD's Key Personnel	Threat	(1) Change in Key positions @ \$275,000 (per spec) is included in the estimate. Add risk for one more.	Medium (50%)	Very Low (< 7d)	High (< \$1MM)	Add Contingency	Mitigated	CONT	RF-0
<input type="checkbox"/>	CTT3	LD's for OJT and DBE requirements	Threat	\$120,000 for 4 Months out of conformance	Medium (50%)	Very Low (< 7d)	Medium (< \$100K)	Add Contingency	Mitigated	CONT	RF-0
<input type="checkbox"/>	CTT4	LD's for closed traffic lanes on US-10	Threat	Ave \$30,000 per 15 minutes. 10 occurrences	High (75%)	Very Low (< 7d)	High (< \$1MM)	Add Contingency	Mitigated	INSUR	RF-5
<input type="checkbox"/>	CTT5	Stakeholder & Governmental approvals	Threat	Stakeholder & Governmental approvals (Multi-use crossings, aesthetics, ATCs, Concepts etc.)	Medium (50%)	Medium (< 60d)	High (< \$1MM)	Add Contingency	Mitigated	BIDQUAL	RF-0
<input type="checkbox"/>	CTT6	Max Cum. Draw Curve	Threat	\$100M financing cost currently in estimate. Risk of financing additional \$50M for 2 years at 2.5%	Low (25%)	Very Low (< 7d)	High (< \$1MM)	Add Contingency	Mitigated	CONT	RF-20
<input type="checkbox"/>	CTT7	Insurance deductibles misc claims	Threat	Insurance deductibles misc claims (traffic accidents, blasting etc.). Farmers Loss Pick of \$3.5M plus 300K for equipment deductible	Medium (50%)	Very Low (< 7d)	Very High (< \$10MM)	Add Contingency	Mitigated	CONT	RF-70
<input type="checkbox"/>	CTT8	Premium to reach DBE goals	Threat	To obtain the last \$45m of participation. Pay a 5% premium	Low (25%)	Very Low (< 7d)	Very Low (< \$1K)		Mitigated	CONT	RF-30

MITIGATION_TYPE	RISK_FACTOR
CONT	RF-40
CONT	RF-0
INSUR	RF-5
BIDQUAL	RF-0
CONT	RF-20
CONT	RF-70
CONT	RF-30