



# Explore API Documentation

SelfService\_Schedule\_ScheduleRegisterEventUserDefinedField

**Version 1.0**

Last Modified: 4/5/2023

Last Modified By: Kimo Pickering

## Change Log

This changelog only contains significant or notable changes to the revision. Any editorial-type changes or minor changes are not included.

Revision	Change Date	Description	Modified By
1.0	4/5/2023	Initial Draft	Kimo Pickering

## Contents

---

Change Log.....	2
Overview.....	3
Relationships and Dependencies.....	3
API Detail.....	5
Supported Filters.....	5
Fields.....	6
Field Descriptions.....	6
Sample.....	7
Data Validation.....	8

## Overview

The SelfService\_Schedule\_ScheduleRegisterEventUserDefinedField API is one of multiple APIs comprising the data contained in the Schedule Register Event entity. The SelfService\_Schedule\_ScheduleRegisterEventUserDefinedField table contains the custom Register Event User Defined Fields (tags) that have been assigned or are ready to be assigned to individual Risk Register Events. The Register Event User Defined Field data type is selected by the user when it is created. Unlike the Register Event Code value that has pre-defined values to choose from, the Register Event User Defined Field value is entered manually by the user each time it is assigned to a Risk Register Event.

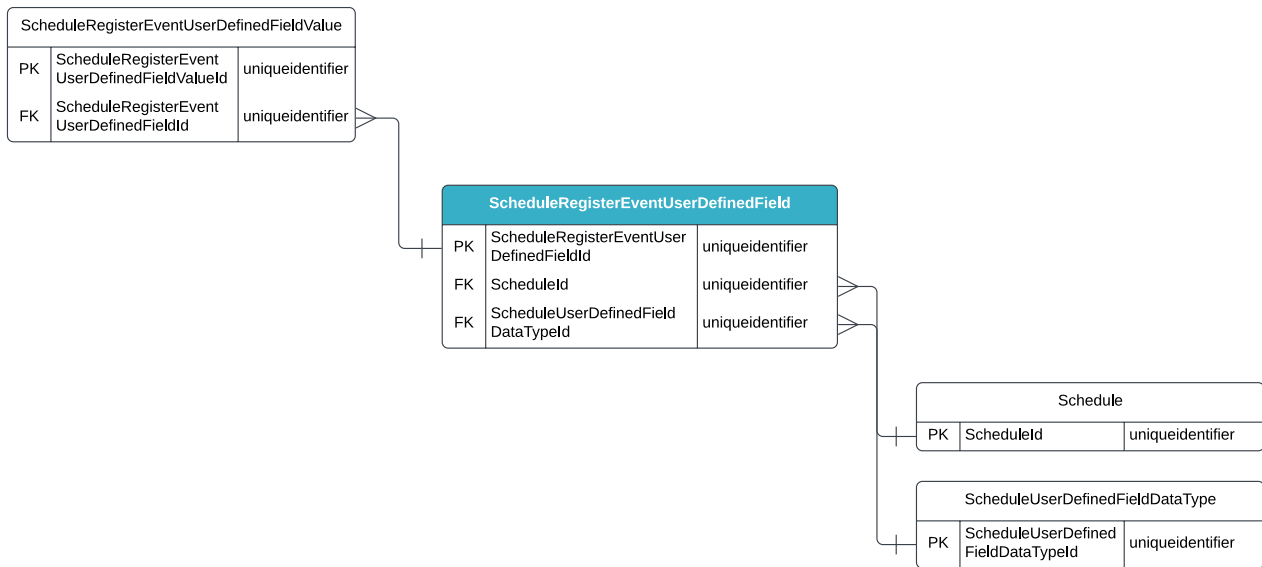
## Relationships and Dependencies

From: Table <sup>1</sup>	To: Table <sup>1</sup>	Relationship	Cardinality <sup>2</sup>
ScheduleRegisterEventUserDefinedFieldValue (SREUDFV)	ScheduleRegisterEventUserDefinedField(SREUDF)	SREUDFV.ScheduleRegisterEventUserDefinedFieldId : SREUDF.ScheduleRegisterEventUserDefinedFieldId	M:1
ScheduleRegisterEventUserDefinedField(SREUDF)	Schedule(S)	SREUDF.ScheduleId : S.ScheduleId	M:1
ScheduleRegisterEventUserDefinedField(SREUDF)	ScheduleUserDefinedFieldDataType(SUDFDT)	SREUDF.ScheduleUserDefinedFieldDataTypeId : SUDFDT.ScheduleUserDefinedFieldDataTypeId	M:1

<sup>1</sup> Prefix table name with "SelfService\_Schedule\_" and exclude table abbreviation for queries (e.g., SelfService\_Schedule\_ScheduleRegisterEventUserDefinedField)

<sup>2</sup> 1:M = One to Many, 1:1 = One to One, M:1 = Many to one

Figure 1. SelfService\_Schedule\_ScheduleRegisterEventUserDefinedField ER Diagram



## API Detail

Direction	From Project Suite	
Pagination	50,000 Rows	
Frequency	All Reporting APIs are used by calling a GET method at an interval determined by the customer. InEight suggests using these APIs on an infrequent basis (once per day) to avoid potential performance impact to live systems when the returned data set could be large.	
Trigger Method(s)	All default OData filters are supported	
Average Payload Size	Depends on date range selected	
APIM Name	SelfService_Schedule_ScheduleRegisterEventUserDefinedField	
Data Refresh/Delta/Incremental Loads	The data in this API will only refresh once per day	
Project Suite	<b>Starting Version</b>	23.6
	<b>Ending Version</b>	N/A

## Supported Filters

All default OData filters are supported by this API.

## Fields

Name	Type	Char Max Length	Numeric Precision	Scale	Required?	Product	PK
ScheduleRegisterEventUserDefinedFieldId	uniqueidentifier	16	0		Y		P
ScheduleId	uniqueidentifier	16	0		N		F
Name	nvarchar(256)	256	0		Y		
ScheduleUserDefinedFieldDataTypeId	uniqueidentifier	16	0		Y		F

## Field Descriptions

Name	Description	Example(s)
ScheduleRegisterEventUserDefinedFieldId	A unique identifier is assigned to each type of Register Event User Defined Field (UDF). Not visible in the interface.	019e5f13-4795-4770-82cb-5d1c88fe5bd2
ScheduleId	A unique identifier is assigned to each schedule record in the table. Formerly known as the Project Id.	cdebe830-5b9b-48ea-af0f-b1505958a0d8
Name	The name of the Register Event User Defined Field.	Risk Owner
ScheduleUserDefinedFieldDataTypeId	A unique identifier is assigned to each Register Event User Defined Field Data Type. Not visible in the interface.	cb5190e0-2f35-4f36-8ab6-2dc5aa2de404

## Sample

### SelfService\_Schedule\_ScheduleRegisterEventUserDefinedField

```
{"ScheduleRegisterEventUserDefinedFieldId":"019e5f13-4795-4770-82cb-5d1c88fe5bd2",  
"ScheduleId":"cdebe830-5b9b-48ea-af0f-b1505958a0d8",  
"Name":"Register Event UDF Cost",  
"ScheduleUserDefinedFieldDataTypeId":"cb5190e0-2f35-4f36-8ab6-2dc5aa2de404"}
```

## Data Validation

The Register Event Codes created for a project schedule can be found by opening a schedule, navigating to the Schedule Configuration view, selecting the Knowledge Tags tab, then selecting Register Event under the UDFs section from the dropdown menu shown in blue text (1) in the image below. This is where Register Event User Defined Fields can be created, added, deleted, and/or edited for a project schedule.

Figures 2. Schedule > Schedule Configuration > Knowledge Tags > Codes/User Defined Field > add/edit User Defined Field

The screenshot displays the InEight software interface. The breadcrumb navigation at the top reads: InEight | KMP2 / Schedule / US-10 DB / Schedule Configuration. Below this, there are tabs for GENERAL, CONTRIBUTORS, KNOWLEDGE TAGS (which is active), CALENDARS, RESOURCES, and SIP RESOURCES. A dropdown menu is open, showing 'UDFs / Register Event' with a red arrow and the number '1' pointing to it. The main content area shows a table with the following data:

Register Event UDFs	Type	
Date Identified	Start Date	⊗
Factored Risk Cost	Cost	⊗
Notes/Comments	Text	⊗
Project Phase	Text	⊗
Project Segment	Text	⊗
Quantity	Integer	⊗
Risk Factor (%)	Integer	⊗
Risk Review Date	Start Date	⊗
Risk Trigger	Text	⊗
UoM	Text	⊗

An 'Add Register Event User Defined Field' dialog box is open in the foreground. It contains the following fields:

- Name:** A text input field with the placeholder text 'Title'.
- Data Type:** A dropdown menu with 'Cost' selected.
- Buttons:** 'Cancel' and 'Save' buttons.