



Explore API Documentation

SelfService_Schedule_ScheduleResourceUserDefinedField

Version 1.0

Last Modified: 5/17/2023

Last Modified By: Kimo Pickering



Change Log

This changelog only contains significant or notable changes to the revision. Any editorial-type changes or minor changes are not included.

Revision	Change Date	Description	Modified By
1.0	5/17/2023	Initial Draft	Kimo Pickering

Contents

Change Log.....	2
Overview.....	3
Relationships and Dependencies.....	3
API Detail.....	5
Supported Filters.....	5
Fields.....	5
Field Descriptions.....	6
Sample.....	7
Data Validation.....	8

Overview

One of the components of the Schedule Resource entity is the SelfService_Schedule_ScheduleResourceUserDefinedField endpoint. The ScheduleResourceUserDefinedField table contains the names of Resource User Defined Fields and comprises values that act as foreign key lookups for the ScheduleResourceUserDefinedFieldValue table. Users create these User Defined Fields (UDFs) in the Knowledge Tags section of the Schedule Configuration view, and subsequently assign them to specific resources in the Resources tab of the application.

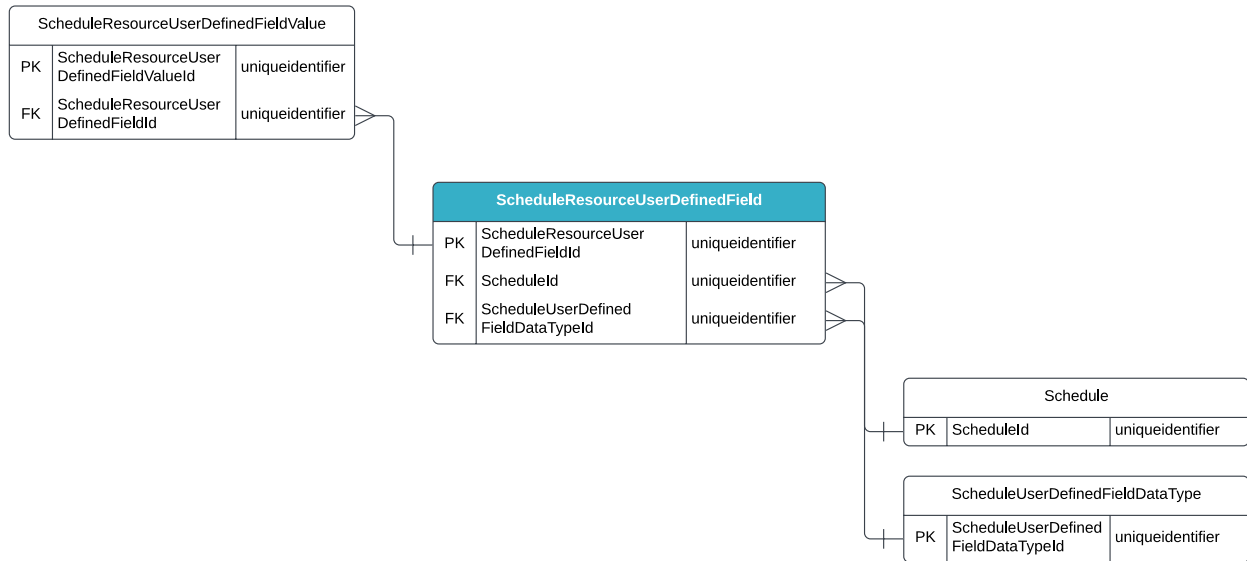
Relationships and Dependencies

From: Table ¹	To: Table ¹	Relationship	Cardinality ²
ScheduleResourceUserDefinedFieldValue(SRUDFV)	ScheduleResourceUserDefinedField(SRUDF)	SRUDFV.ScheduleResourceUserDefinedFieldId : SRUDF.ScheduleResourceUserDefinedFieldId	M:1
ScheduleResourceUserDefinedField(SRUDF)	Schedule(S)	SRUDF.ScheduleId : S.ScheduleId	M:1
ScheduleResourceUserDefinedField(SRUDF)	ScheduleUserDefinedFieldDataType(SUDFDT)	SRUDF.ScheduleUserDefinedFieldDataTypeId : SUDFDT.ScheduleUserDefinedFieldDataTypeId	M:1

¹ Prefix table name with "SelfService_Schedule_" and exclude table abbreviation for queries (e.g., SelfService_Schedule_ScheduleResourceUserDefinedField)

² 1:M = One to Many, 1:1 = One to One, M:1 = Many to one

Figure 1. SelfService_Schedule_ScheduleResourceUserDefinedField ER Diagram



API Detail

Direction	From Project Suite	
Pagination	50,000 Rows	
Frequency	All Reporting APIs are used by calling a GET method at an interval determined by the customer. InEight suggests using these APIs on an infrequent basis (once per day) to avoid potential performance impact to live systems when the returned data set could be large.	
Trigger Method(s)	All default OData filters are supported	
Average Payload Size	Depends on date range selected	
APIM Name	SelfService_Schedule_ScheduleResourceUserDefinedField	
Data Refresh/Delta/Incremental Loads	This API will only refresh once per day	
Project Suite	Starting Version	23.8
	Ending Version	N/A

Supported Filters

All default OData filters are supported by this API.

Fields

Name	Type	Char Max Length	Numeric Precision	Required?	Key?		
ScheduleResourceUserDefinedFieldId	uniqueidentifier	16	0	Y	P		
ScheduleId	uniqueidentifier	16	0	N	F		
Name	nvarchar(256)	256	0	Y			
ScheduleUserDefinedFieldDataTypeId	uniqueidentifier	16	0	Y	F		
CreatedById	bigint	19	19	Y			
CreatedDate	datetimeoffset	10	34	Y			
ModifiedById	bigint	19	19	Y			
ModifiedDate	datetimeoffset	10	34	Y			
RowVersion	Bigint	Null	Null	Null	Y		

Field Descriptions

Name	Description	Example(s)
ScheduleResourceUserDefinedFieldId	A unique identifier assigned to a Resource User Defined Field (UDF). Not visible in the interface.	33baa769-cb3f-446f-86fb-3a55e19255b2
ScheduleId	A unique identifier assigned to each schedule record in the table. Not visible in the interface.	a4ee0f55-3239-48ff-920b-323a7d0839c4
Name	The name of a Resource's User Defined Field.	Crew Name
ScheduleUserDefinedFieldDataTypeId	A unique identifier assigned to a User Defined Field's data type.	9a77fb21-e5e8-4b44-bafc-7e4634edd572
CreatedById	The unique identifier of the user who created the item. Not visible in the Interface.	35498621
CreatedDate	Date/timestamp the item is created.	2020-02-26 09:41.000 + 00.00
ModifiedById	The unique identifier of the user who modified the item. Not visible in the Interface.	29834765
ModifiedDate	Date/timestamp the item was modified.	2020-05-13 09:13.000 + 00.00
RowVersion	An indicator if a row has been updated. if this value is greater than the stored value, then update record.	54582065

Sample

[https://\[tenant\].hds.ineight.com/reportwebservices/odata/SelfService_Schedule_ScheduleResourceUserDefinedField](https://[tenant].hds.ineight.com/reportwebservices/odata/SelfService_Schedule_ScheduleResourceUserDefinedField)

```
{"ScheduleResourceUserDefinedFieldId":{"ScheduleResourceUserDefinedFieldId":"33baa769-cb3f-446f-86fb-3a55e19255b2"},"ScheduleId":{"ScheduleId":"a4ee0f55-3239-48ff-920b-323a7d0839c4"},"Name":{"Name":"Crew Name"},"ScheduleUserDefinedFieldDataTypeId":{"ScheduleUserDefinedFieldDataTypeId":"9a77fb21-e5e8-4b44-bafc-7e4634edd572"},"CreatedById":{"CreatedById":"35498621"},"CreatedDate":"2020-02-26 09:41.000 + 00.00","ModifiedById":{"ModifiedById":"29834765"},"ModifiedDate":"2020-05-13 09:13.000 + 00.00"}
```

Data Validation

Schedule Resource User Defined Fields are created in the Schedule Configuration view's Knowledge Tags module and subsequently assigned in the Resources tab. See Figures 2, 3, and 4 below.

Figure 2. Schedule > Schedule Configuration view > Knowledge Tags tab > Codes/Resource dropdown > UDFs > Resource

The screenshot shows the InEight software interface. The breadcrumb navigation is: InEight | KMP2 / Schedule / 01-US-10 DB / Schedule Configuration. The 'KNOWLEDGE TAGS' tab is selected. A dropdown menu is open for 'UDFs / Resource', with 'Resource' highlighted. The main table displays the following data:

Resource UDFs	Type
Crew	Text

Figure 3. Schedule > Schedule Configuration view > Knowledge Tags tab > Codes/Resource dropdown > UDFs > Resource > Add Resource User Defined Field

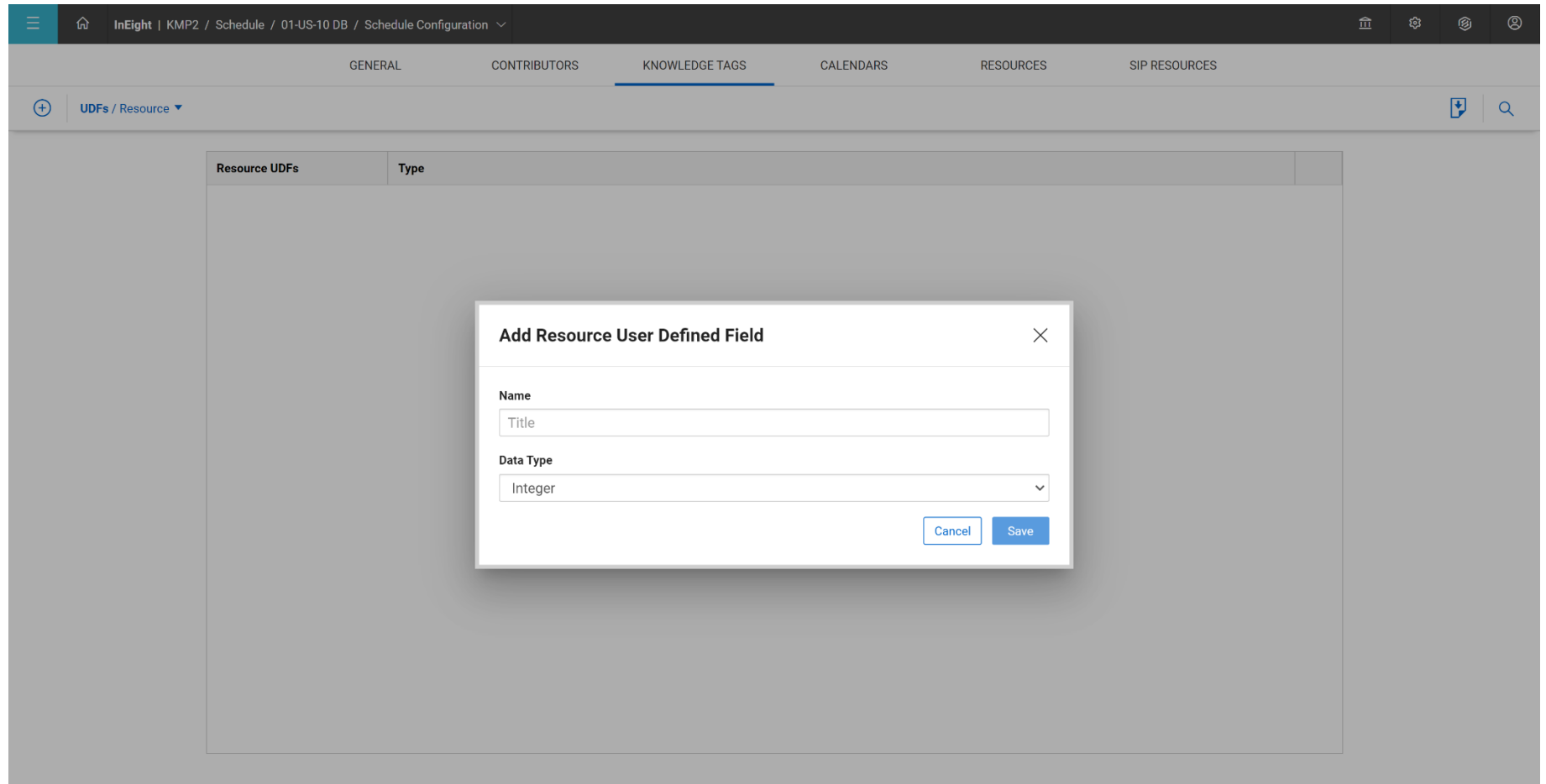


Figure 4. Schedule > Schedule Configuration view > Resources tab > add additional columns > Resource UDF column

InEight KMP2 / Schedule / 01-US-10 DB / Schedule Configuration									
GENERAL CONTRIBUTORS KNOWLEDGE TAGS CALENDARS RESOURCES SIP RESOURCES									
ID	Name	Category	Color	UoM	Default Units/d	Cost/Unit	Assignments		Crew
10.04.03	Site Preparation	Labor		Hours	8.00	66.61	1		
10.04.03.01L	Clear/ Grub/ Demo Exist Structures	Labor		Hours	8.00	407.44	1		
10.04.03.02L	MOT	Labor		Hours	8.00	428.08	1		
10.04.05	Grading	Labor		Hours	8.00	324.85	1		
10.04.05.01L	Exc to Embank - Labor	Labor		Hours	90.00	50.00	3		JV Crew 1
10.04.05.01E	Exc to Embank - Equip.	Equipment Hrs		Hours	64.00	205.00	2		JV Crew 1
10.04.05.02L	Drill & Shoot Crew	Labor		Hours	30.00	48.00	4		
10.04.05.03	Walls	Labor		Hours	8.00	231.21	1		
10.04.05.03.01L	CIP Walls	Labor		Hours	8.00	96.56	1		
10.04.05.03.02L	MSE Walls	Labor		Hours	8.00	198.37	2		
10.04.05.08	Drainage	Labor		Hours	8.00	183.01	1		
10.04.07	Bridges	Labor		Hours	8.00	229.82	1		
10.04.08	Soundwalls	Labor		Hours	8.00	605.78	1		
10.04.09.01	Base Course	Labor		Hours	8.00	199.75	1		
10.04.09.02	PCCP	Labor		Hours	8.00	258.50	1		
10.04.09.03	Barriers, Curbs, Gutters and Sidewalks	Labor		Hours	8.00	251.83	1		
10.04.10.01	AC Paving	Labor		Hours	8.00	35687.61	1		
10.04.10.02	Striping	Labor		Hours	8.00	22414.00	1		
10.04.11	ITS/ Lighting	Labor		Hours	8.00	294647.57	1		

