



# Explore API Documentation

## SelfService\_Schedule\_ScheduleType

Version 1.0

Last Modified: 8/25/2023

Last Modified By: Kimo Pickering

## Change Log

This changelog only contains significant or notable changes to the revision. Any editorial type changes or minor changes are not included.

Revision	Change Date	Description	Modified By
1.0	3/22/2023	Initial draft	Kimo Pickering

## Contents

---

Change Log.....	2
Overview.....	3
Relationships and Dependencies.....	3
API Detail.....	4
Supported Filters.....	4
Fields.....	4
Field Descriptions.....	4
Sample.....	5
Data Validation.....	6

## Overview

The SelfService\_Schedule\_ScheduleType table contains the list of schedule types used in an organization's tenant environment. Schedule types available to assign to individual project schedules include:

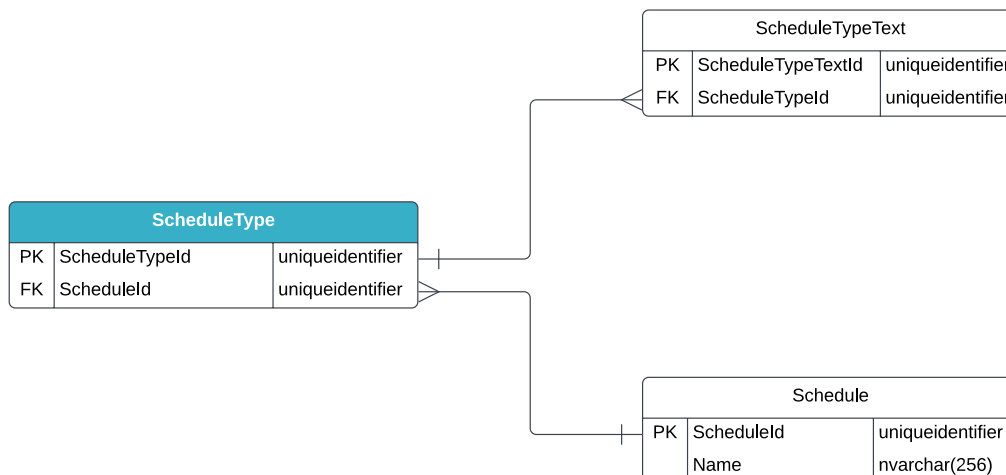
- Active Estimate
- Inactive Estimate
- Active Baseline
- Inactive Baseline
- Re-Baseline
- Active Update
- Inactive Update
- Planned
- What If
- None

## Relationships and Dependencies

From: Table <sup>1</sup>	To: Table <sup>1</sup>	Relationship	Cardinality <sup>2</sup>	Comment
ScheduleType(ST)	Schedule(S)	ST.ScheduleId : S.ScheduleId	M:1	
ScheduleTypeText(STT)	ScheduleType(ST)	STT.ScheduleTypeId : ST.ScheduleTypeId	M:1	

<sup>1</sup> Prefix table name with "SelfService\_Schedule\_" and exclude table abbreviation for queries (e.g., SelfService\_Schedule\_ScheduleType); <sup>2</sup> 1:M = One to Many, 1:1 = One to One, M:1 = Many to one

Figure 1 - SelfService\_Schedule\_ScheduleType ER Diagram



## API Detail

Direction	From Project Suite	
Pagination	50,000 Rows	
Frequency	All Reporting APIs are used by calling a GET method at an interval determined by the customer. InEight suggests using these APIs on an infrequent basis (once per day) to avoid potential performance impact to live systems when the returned data set could be large.	
Trigger Method(s)	All default OData filters are supported	
Average Payload Size	Depends on date range selected	
APIM Name	SelfService_Schedule_ScheduleType	
Data Refresh/Delta/Incremental Loads	The data in this API will only refresh once per day	
Project Suite	Starting Version	23.6
	Ending Version	N/A

## Supported Filters

All default OData filters are supported by this API.

## Fields

Name	Type	Char Max Length	Numeric Precision	Scale	Required?	Product	PK
ScheduleTypeld	uniqueidentifier	16	0		Y		P
Name	nvarchar(256)	0	0		Y		

## Field Descriptions

Name	Description	Example(s)
ScheduleTypeld	A unique identifier assigned to the Schedule Type	E4B0EA70-E307-4E49-9093-42D46D61B2C6
Name	Name of the Schedule Type	Baseline, Re-Baseline, Update, Estimate, Active Update, What if

## Sample

### SelfService\_Schedule\_ScheduleType

```
{"ScheduleTypeId": "E4B0EA70-E307-4E49-9093-42D46D61B2C6",  
"Name": "Baseline"}
```

## Data Validation

This data can be validated by navigating to the InEight Schedule application's Project list page showing a list of projects and schedules. In the table is a column named Schedule type.

Figure 2: Schedule > Projects/Schedules table

InEight / Schedule										2021											
Project/Schedule name	Schedule ID	Start	Finish	Calendar days	Schedule type	Data date	Knowle	Jun	Jul	Aug	Sep	Oct	Nov	Dec							
None		21 Jun 2021	11 Jul 2022					[Blue bar]													
ABC Building Project Baseline	ABC Building Project 4	21 Jun 2021	11 Jul 2022	386	Estimate	21 Jun 2021		[Green bar]													
ABC Building Project Baseline	ABC Building Project	21 Jun 2021	11 Jul 2022	386	Baseline	21 Jun 2021		[Orange bar]													
ABC Building Project Baseline Copy	SCHED-5	21 Jun 2021	11 Jul 2022	386	Estimate	21 Jun 2021		[Green bar]													
ABC Building Project Baseline Copy	SCHED-6	21 Jun 2021	11 Jul 2022	386	Baseline	21 Jun 2021		[Orange bar]													
ABC Building Project Baseline Copy	SCHED-7	21 Jun 2021	11 Jul 2022	386	Update	21 Jun 2021		[Pink bar]													
ABC Building Project Baseline Copy	SCHED-8	21 Jun 2021	11 Jul 2022	386	Active Update	21 Jun 2021		[Purple bar]													

Displayed results: 6 | Selected: 0 | View selected | Clear selection