



Explore API Documentation

SelfService_Schedule_ScheduleUserDefinedField

Version 1.0

Last Modified: 4/11/2023

Last Modified By: Kimo Pickering

Change Log

This changelog only contains significant or notable changes to the revision. Any editorial-type changes or minor changes are not included.

Revision	Change Date	Description	Modified By
1.0	4/11/2023	Initial Draft	Kimo Pickering

Contents

Change Log.....	2
Overview	3
Relationships and Dependencies	3
API Detail.....	5
Supported Filters	5
Fields	6
Field Descriptions	6
Sample.....	7
Data Validation	8

Overview

The SelfService_Schedule_ScheduleUserDefinedField API is one of multiple APIs comprising the data contained in the Schedule Code/UDF entity. The SelfService_Schedule_ScheduleUserDefinedField table contains the custom Schedule User Defined Fields (tags) that have been assigned or are ready to be assigned to the schedule. The Schedule User Defined Field data type is selected by the user when it is created. Unlike the Schedule Project Code value that has pre-defined values to choose from, the Schedule User Defined Field value is entered manually by the user each time it is assigned to a schedule on the application's main home page.

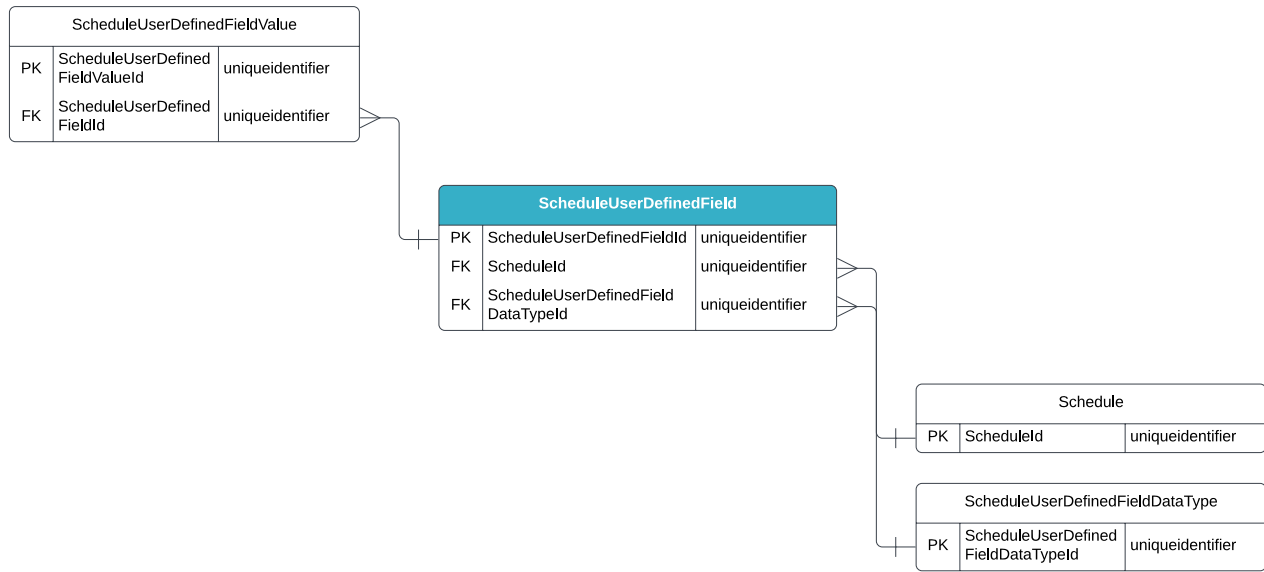
Relationships and Dependencies

From: Table ¹	To: Table ¹	Relationship	Cardinality ²	Comment
ScheduleUserDefinedFieldValue(SUDFV)	ScheduleUserDefinedField(SUDF)	SUDFV.ScheduleUserDefinedFieldId : SUDF.ScheduleUserDefinedFieldId	M:1	
ScheduleUserDefinedField(SUDF)	Schedule(S)	SUDF.ScheduleId : S.ScheduleId	M:1	
ScheduleUserDefinedField(SUDF)	ScheduleUserDefinedFieldDataType(SUDFDT)	SUDF.ScheduleUserDefinedFieldDataTypeId : SUDFDT.ScheduleUserDefinedFieldDataTypeId	M:1	

¹ Prefix table name with "SelfService_Schedule_" and exclude table abbreviation for queries (e.g., SelfService_Schedule_ScheduleUserDefinedField)

² 1:M = One to Many, 1:1 = One to One, M:1 = Many to one

Figure 1. SelfService_Schedule_ScheduleUserDefinedField ER Diagram



API Detail

Direction	From Project Suite	
Pagination	50,000 Rows	
Frequency	All Reporting APIs are used by calling a GET method at an interval determined by the customer. InEight suggests using these APIs on an infrequent basis (once per day) to avoid potential performance impact to live systems when the returned data set could be large.	
Trigger Method(s)	All default OData filters are supported	
Average Payload Size	Depends on date range selected	
APIM Name	SelfService_Schedule_ScheduleUserDefinedField	
Data Refresh/Delta/Incremental Loads	The data in this API will only refresh once per day	
Project Suite	Starting Version	23.10
	Ending Version	N/A

Supported Filters

All default OData filters are supported by this API.

Fields

Name	Type	Char Max Length	Numeric Precision	Scale	Required ?	Product	P K
ScheduleUserDefinedFieldId	uniqueidentifier	16	0		Y		P
ScheduleId	uniqueidentifier	16	0		Y		F
Name	nvarchar(256)	256	0		Y		
ScheduleUserDefinedFieldDataTypeId	uniqueidentifier	16	0		Y		F
RowVersion	Bigint	Null	Null	Null	Y		

Field Descriptions

Name	Description	Example(s)
ScheduleUserDefinedFieldId	A unique identifier assigned to a Schedule User Defined Field. Not visible in the interface.	48912bfe-d24c-4696-9540-c3a0a072f226
ScheduleId	A unique identifier assigned to each schedule record in the table. Formerly known as the Project Id.	eed76053-a283-4678-9dad-5902ad1d385a
Name	The name of the User Defined Field.	Review Date
ScheduleUserDefinedFieldDataTypeId	A unique identifier assigned to a Schedule User Defined Field Data Type. Not visible in the interface.	a5f67d67-b284-46de-989d-aaab3e728ab1
RowVersion	An indicator if a row has been updated. if this value is greater than the stored value, then update record.	54582065

Sample

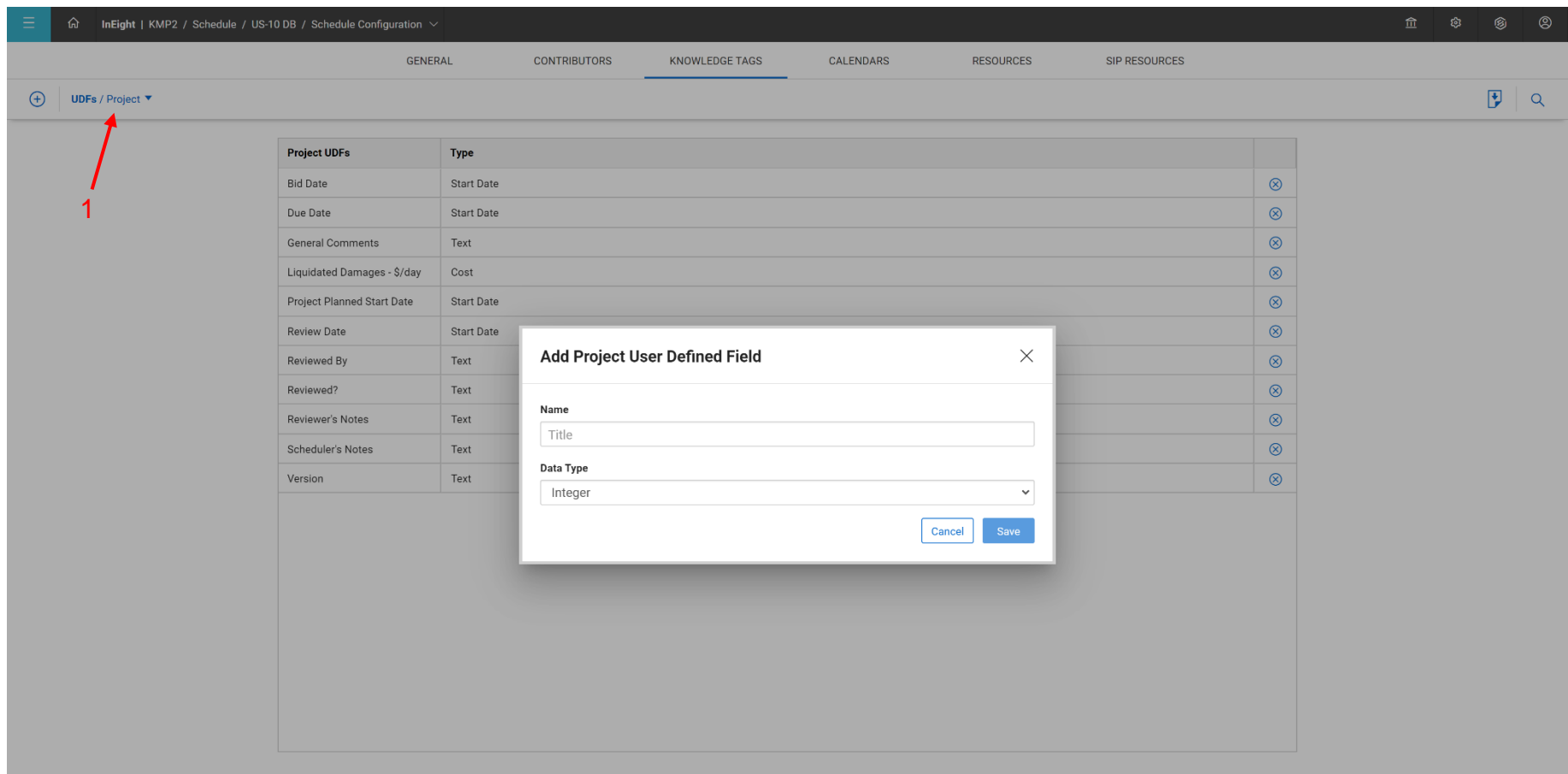
SelfService_Schedule_ScheduleUserDefinedField

```
{"ScheduleUserDefinedFieldId":"48912bfe-d24c-4696-9540-c3a0a072f226",  
"ScheduleId":"eed76053-a283-4678-9dad-5902ad1d385a",  
"Name":"Review Date",  
"ScheduleUserDefinedFieldDataTypeId":"a5f67d67-b284-46de-989d-aaab3e728ab1"}
```

Data Validation

The Schedule (aka, Project) User Defined Field created for a project schedule can be found by opening a schedule, navigating to the Schedule Configuration view, selecting the Knowledge Tags tab, then selecting Project under the UDFs section from the dropdown menu shown in blue text (1) in the image below. This is where Schedule User Defined Fields can be created, added, deleted, and/or edited for a project schedule. These UDFs and values then must be assigned from the Schedule application's main home page.

Figures 2. Schedule > Schedule Configuration > Knowledge Tags > Codes/User Defined Field > add/edit User Defined Field



The screenshot displays the InEight application interface. The breadcrumb navigation at the top reads: InEight | KMP2 / Schedule / US-10 DB / Schedule Configuration. Below this, a horizontal menu contains tabs for GENERAL, CONTRIBUTORS, KNOWLEDGE TAGS (which is selected), CALENDARS, RESOURCES, and SIP RESOURCES. A dropdown menu is open, showing 'UDFs / Project' with a red arrow and the number '1' pointing to it. The main content area features a table of 'Project UDFs' with columns for 'Name' and 'Type'. Each row includes a delete icon (⊗) on the right. An 'Add Project User Defined Field' dialog box is overlaid on the table, containing a 'Name' field with 'Title' entered, a 'Data Type' dropdown menu with 'Integer' selected, and 'Cancel' and 'Save' buttons.

Project UDFs	Type	
Bid Date	Start Date	⊗
Due Date	Start Date	⊗
General Comments	Text	⊗
Liquidated Damages - \$/day	Cost	⊗
Project Planned Start Date	Start Date	⊗
Review Date	Start Date	⊗
Reviewed By	Text	⊗
Reviewed?	Text	⊗
Reviewer's Notes	Text	⊗
Scheduler's Notes	Text	⊗
Version	Text	⊗