



Explore API Documentation

SelfService_Schedule_ScheduleUserDefinedFieldValue

Version 1.0

Last Modified: 4/12/2023

Last Modified By: Kimo Pickering

Change Log

This changelog only contains significant or notable changes to the revision. Any editorial-type changes or minor changes are not included.

Revision	Change Date	Description	Modified By
1.0	4/12/2023	Initial Draft	Kimo Pickering

Contents

Change Log.....	2
Overview	3
Relationships and Dependencies	3
API Detail.....	4
Supported Filters	4
Fields	5
Field Descriptions	5
Sample.....	6
Data Validation	7

Overview

The SelfService_Schedule_ScheduleUserDefinedFieldValue API is one of multiple APIs comprising the data contained in the Schedule Code/UDF entity. The SelfService_Schedule_ScheduleUserDefinedFieldValue table contains the custom Schedule User Defined Fields (tags) that have been assigned or are ready to be assigned to the schedule. The Schedule User Defined Field data type is selected by the user when it is created. Unlike the Schedule Project Code value that has pre-defined values to choose from, the Schedule User Defined Field value is entered manually by the user each time it is assigned to a schedule on the application's main home page.

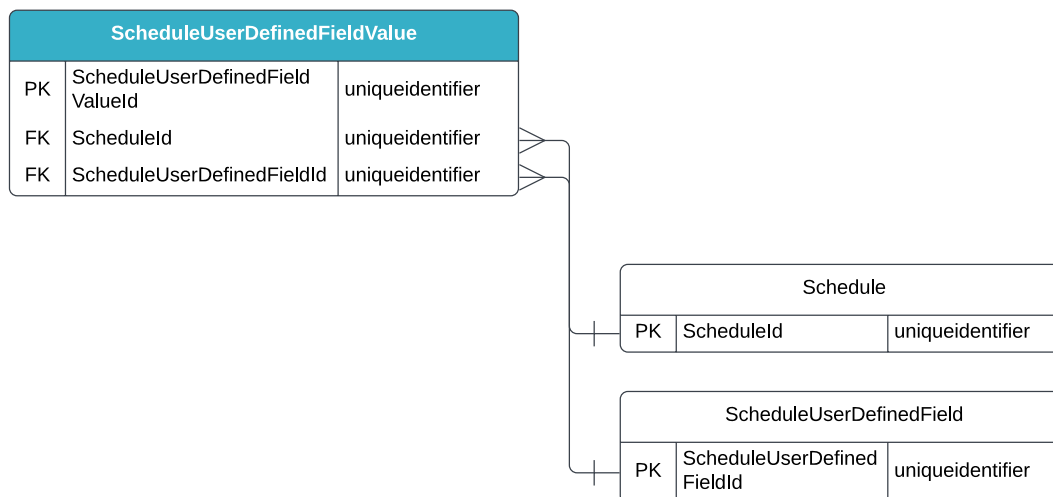
Relationships and Dependencies

From: Table ¹	To: Table ¹	Relationship	Cardinality ²	Comment
ScheduleUserDefinedFieldValue (SUDFV)	Schedule(S)	SUDFV.ScheduleId : S.ScheduleId	M:1	
ScheduleUserDefinedFieldValue (SUDFV)	ScheduleUser DefinedField (SUDF)	SUDFV.ScheduleUserDefinedFieldId : SUDF.ScheduleUserDefinedFieldId	M:1	

¹ Prefix table name with "SelfService_Schedule_" and exclude table abbreviation for queries (e.g., SelfService_Schedule_ScheduleUserDefinedFieldValue)

² 1:M = One to Many, 1:1 = One to One, M:1 = Many to one

Figure 1. SelfService_Schedule_ScheduleUserDefinedFieldValue ER Diagram



API Detail

Direction	From Project Suite	
Pagination	50,000 Rows	
Frequency	All Reporting APIs are used by calling a GET method at an interval determined by the customer. InEight suggests using these APIs on an infrequent basis (once per day) to avoid potential performance impact to live systems when the returned data set could be large.	
Trigger Method(s)	All default OData filters are supported	
Average Payload Size	Depends on date range selected	
APIM Name	SelfService_Schedule_ScheduleUserDefinedFieldValue	
Data Refresh/Delta/Incremental Loads	The data in this API will only refresh once per day	
Project Suite	Starting Version	23.10
	Ending Version	N/A

Supported Filters

All default OData filters are supported by this API.

Fields

Name	Type	Char Max Length	Numeric Precision	Scale	Required?	Product	P K
ScheduleUserDefinedFieldValueId	uniqueidentifier	16	0		Y		P
ScheduleId	uniqueidentifier	16	0		Y		F
ScheduleUserDefinedFieldId	uniqueidentifier	16	0		Y		F
TextValue	nvarchar(256)	256	0		N		
NumberValue	decimal(16,5)	16	5		N		
DateValue	datetime	8	23	3	N		
RowVersion	Bigint	Null	Null	Null	Y		

Field Descriptions

Name	Description	Example(s)
ScheduleUserDefinedFieldValueId	A unique identifier assigned to a Schedule User Defined Field Value. Not visible in the interface.	eecaa298-4bf4-4792-9c3c-f417806a1b25
ScheduleId	A unique identifier assigned to each schedule record in the table. Formerly known as the Project Id.	8993a2c7-6979-4909-acbd-7883465d671d
ScheduleUserDefinedFieldId	A unique identifier assigned to a Schedule User Defined Field. Not visible in the interface.	470378e3-65e1-4e3a-b40e-f328155d3103
TextValue	The value of the Schedule User Defined Field text data type.	Reviewed By
NumberValue	The value of the Schedule User Defined Field number data type.	2
DateValue	The value of the Schedule User Defined Field date data type.	2015-10-06 13:47:03.000
RowVersion	An indicator if a row has been updated. if this value is greater than the stored value, then update record.	54582065

Sample

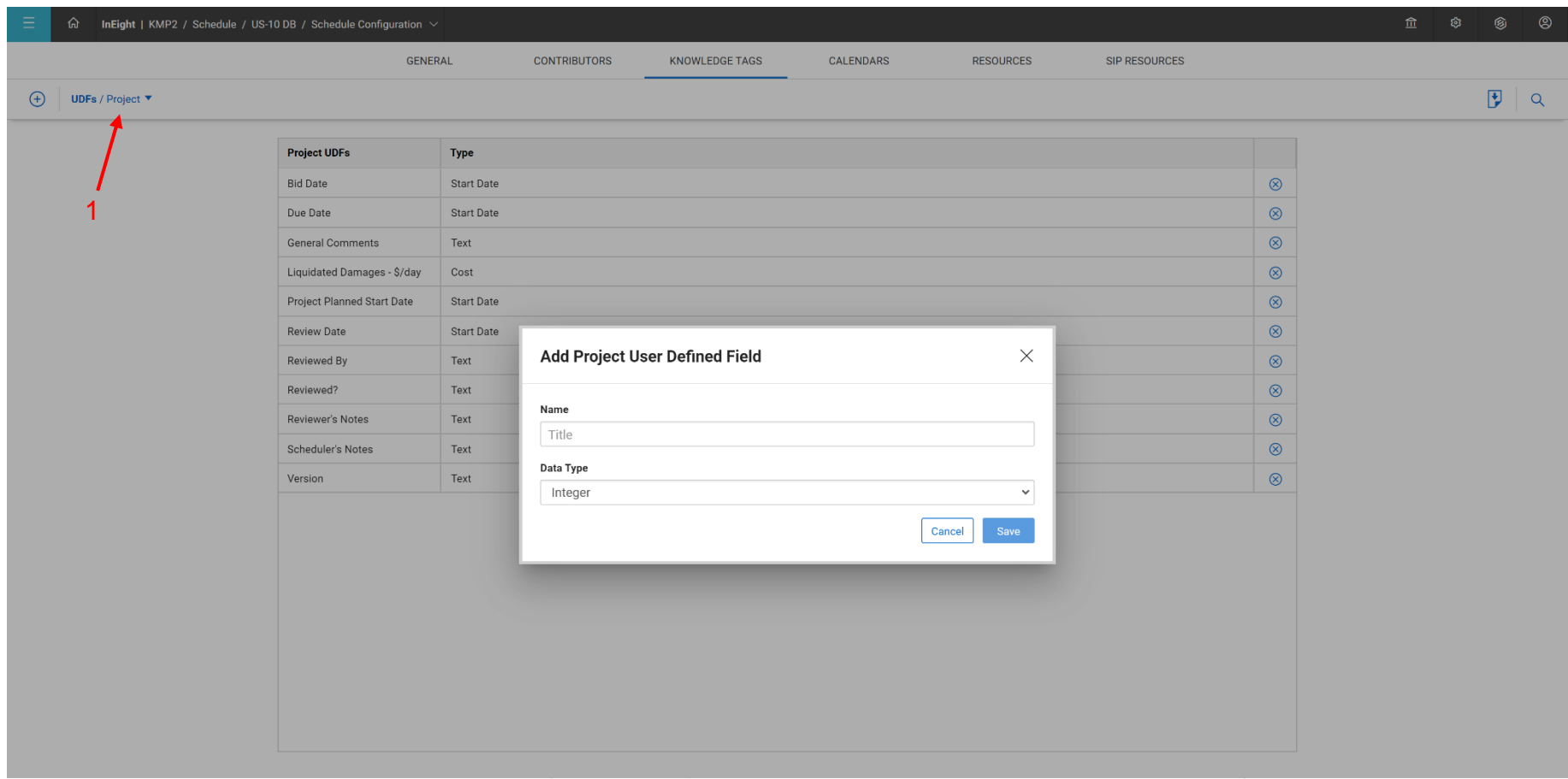
SelfService_Schedule_ScheduleUserDefinedFieldValue

```
{"ScheduleUserDefinedFieldValueId":"eecaa298-4bf4-4792-9c3c-f417806a1b25",  
"ScheduleId":"8993a2c7-6979-4909-acbd-7883465d671d",  
"ScheduleUserDefinedFieldId":"470378e3-65e1-4e3a-b40e-f328155d3103",  
"TextValue":"Reviewed By",  
"NumberValue":"2",  
"DateValue":"2015-10-06 13:47.000 + 00.00"}
```

Data Validation

The Schedule (aka, Project) User Defined Field Values created for a project schedule can be found by opening a schedule, navigating to the Schedule Configuration view, selecting the Knowledge Tags tab, then selecting Project under the UDFs section from the dropdown menu shown in blue text (1) in the image below. This is where Schedule User Defined Fields can be created, edited, and/or deleted for a project schedule. UDFs and their values can only be assigned from the Schedule application's main home page, as shown in Figure 3 below.

Figure 2. Schedule > Schedule Configuration > Knowledge Tags > Codes/User Defined Field > add/edit User Defined Field



The screenshot displays the InEight application interface. The top navigation bar shows the breadcrumb path: InEight | KMP2 / Schedule / US-10 DB / Schedule Configuration. Below this, there are tabs for GENERAL, CONTRIBUTORS, KNOWLEDGE TAGS (selected), CALENDARS, RESOURCES, and SIP RESOURCES. A dropdown menu is open, showing 'UDFs / Project' with a red arrow and the number '1' pointing to it. The main content area shows a table of Project UDFs with columns for 'Project UDFs' and 'Type'. The table lists various fields such as Bid Date, Due Date, General Comments, Liquidated Damages - \$/day, Project Planned Start Date, Review Date, Reviewed By, Reviewed?, Reviewer's Notes, Scheduler's Notes, and Version. A modal dialog box titled 'Add Project User Defined Field' is open in the center, containing a 'Name' field with the value 'Title', a 'Data Type' dropdown menu with 'Integer' selected, and 'Cancel' and 'Save' buttons.

Project UDFs	Type	
Bid Date	Start Date	⊗
Due Date	Start Date	⊗
General Comments	Text	⊗
Liquidated Damages - \$/day	Cost	⊗
Project Planned Start Date	Start Date	⊗
Review Date	Start Date	⊗
Reviewed By	Text	⊗
Reviewed?	Text	⊗
Reviewer's Notes	Text	⊗
Scheduler's Notes	Text	⊗
Version	Text	⊗

Figure 3. Schedule Home Page > Expand a Project Workspace > Select a schedule > Select icon in Knowledge tags column > UDFs tab > Select UDF > Enter a value > Select "Assign" button

The screenshot displays the InEight Schedule Home Page. A table lists schedules with columns for Project/Schedule name, Schedule ID, Start, Finish, Calendar days, Schedule type, Data date, Knowledge tags, and Markup. The 'US-10 DB' schedule is selected, and its 'Knowledge tags' column contains a '21' icon highlighted with a red box. A modal window titled 'Assign knowledge tag' is open, showing the 'UDFs' tab. The modal includes a search bar, a table of UDFs with fields like Version, Reviewed By, and Review Date, and a calendar for selecting a date. The 'Assign' button is visible at the bottom right of the modal.

Project/Schedule name	Schedule ID	Start	Finish	Calendar days	Schedule type	Data date	Knowledge tags	Markup
▼ KMP2		11 Jan 2016	08 Apr 2020					
US-10 DB	US-10	11 Jan 2016	08 Apr 2020	1550	Estimate	11 Jan 2016	21	