



Explore API Documentation

SelfService_Schedule_ScheduleWorkBreakdownStructureType
Version 1.0

Last Modified: 5/1/2023

Last Modified By: Kimo Pickering

Change Log

This changelog only contains significant or notable changes to the revision. Any editorial-type changes or minor changes are not included.

Revision	Change Date	Description	Modified By
1.0	5/1/2023	Initial Draft	Kimo Pickering

Contents

Change Log.....	2
Overview.....	3
Relationships and Dependencies.....	3
API Detail.....	5
Supported Filters.....	5
Fields.....	5
Field Descriptions.....	6
Sample.....	6
Data Validation.....	7

Overview

The SelfService_Schedule_ScheduleWorkBreakdownStructureType API is one of multiple APIs comprising the data contained in the Schedule Work Breakdown Structure (WBS) entity. The values contained in the ScheduleWorkBreakdownStructureType table are derived from the application's Plan view when a WBS item is created and assigned a WBS Type of one of the following:

Work Breakdown Structure Type Name	Work Breakdown Structure Type Code
WBS	wbs
Planning Package	p_package

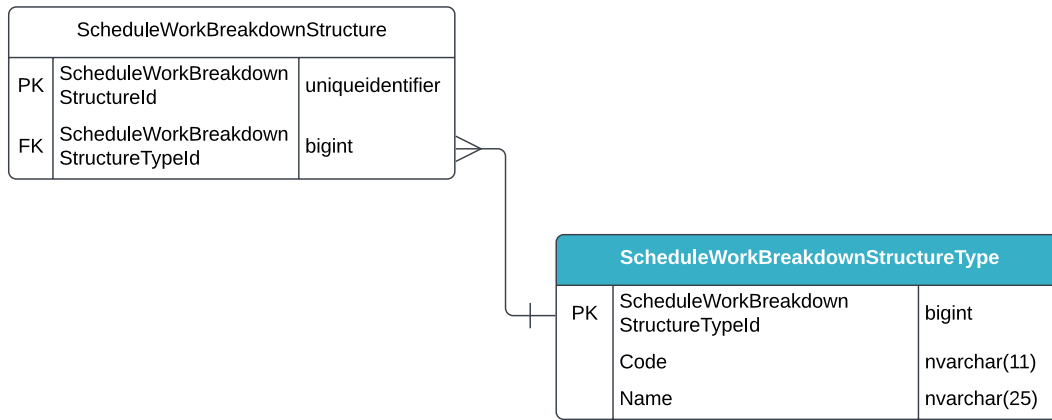
Relationships and Dependencies

From: Table ¹	To: Table ¹	Relationship	Cardinality ²
ScheduleWorkBreakdownStructure(SWBS)	ScheduleWorkBreakdownStructureType(SWBST)	SWBS.ScheduleWorkBreakdownStructureTypeId : SWBST.ScheduleWorkBreakdownStructureTypeId	M:1

¹ Prefix table name with "SelfService_Schedule_" and exclude table abbreviation for queries (e.g., SelfService_Schedule_ScheduleWorkBreakdownStructureType)

² 1:M = One to Many, 1:1 = One to One, M:1 = Many to one

Figure 1. SelfService_Schedule_ScheduleWorkBreakdownStructureType ER Diagram



API Detail

Direction	From Project Suite	
Pagination	50,000 Rows	
Frequency	All Reporting APIs are used by calling a GET method at an interval determined by the customer. InEight suggests using these APIs on an infrequent basis (once per day) to avoid potential performance impact to live systems when the returned data set could be large.	
Trigger Method(s)	All default OData filters are supported	
Average Payload Size	Depends on date range selected	
APIM Name	SelfService_Schedule_ScheduleWorkBreakdownStructureType	
Data Refresh/Delta/Incremental Loads	This API must be run as a full refresh each time; the data in this API refreshes every 15-20 minutes	
Project Suite	Starting Version	23.6
	Ending Version	N/A

Supported Filters

All default OData filters are supported by this API.

Fields

Name	Type	Char Max Length	Numeric Precision	Scale	Product	Required?	PK
ScheduleWorkBreakdownStructureTypeId	bigint	8	19			Y	P
Code	nvarchar(11)	11	0			Y	
Name	nvarchar(25)	25	0			Y	
Languageld	bigint	8	19			N	

Field Descriptions

Name	Description	Example(s)
ScheduleWorkBreakdownStructureTypeId	A unique identifier assigned to the selected Work Breakdown Structure Type. Not visible in the interface.	44657139
Code	The Work Breakdown Structure Type code assigned to the activity; wbs, p_package	wbs
Name	The name of the Work Breakdown Structure item type.	WBS
LanguageId	The ID assigned to the user's language preference.	99811250

Sample

https://ineightsuite-qa-232.hds.ineight.com/reportwebservices/odata/SelfService_Schedule_ScheduleWorkBreakdownStructureType

```
{ "ScheduleWorkBreakdownStructureTypeId": "44657139",
  "Code": "wbs",
  "Name": "WBS",
  "LanguageId": "99811250" }
```

Data Validation

A Work Breakdown Structure (WBS) Type is assigned when the WBS is created in the Plan view of the application. To create a WBS and assign the WBS type, click on the ellipse's icon in the "Actions" column and select the type of WBS to create from the dropdown menu. See image below.

Figure 2. Schedule > Plan view > Actions

The screenshot displays the 'Plan' view of a project schedule. A table lists various activities with columns for ID, Description, Actions, Id, Start Date, Finish Date, Duration, Remaining Duration, Float, and Resources. A red box highlights the 'Actions' column for the 'WBS Level 1' activity, which has opened a dropdown menu. The menu contains the following options:

- Create WBS
- Create planning package
- Create activity
- Create level of effort
- Create start milestone
- Create finish milestone
- Create WBS summary activity
- Detail out
- Fill down
- Remove assignments
- Copy
- Paste
- Publish to the knowledge base
- Delete

The background interface includes a Gantt chart showing task bars across a timeline from 2015 to 2019, and a right-hand sidebar with project details and schedule suggestions.